

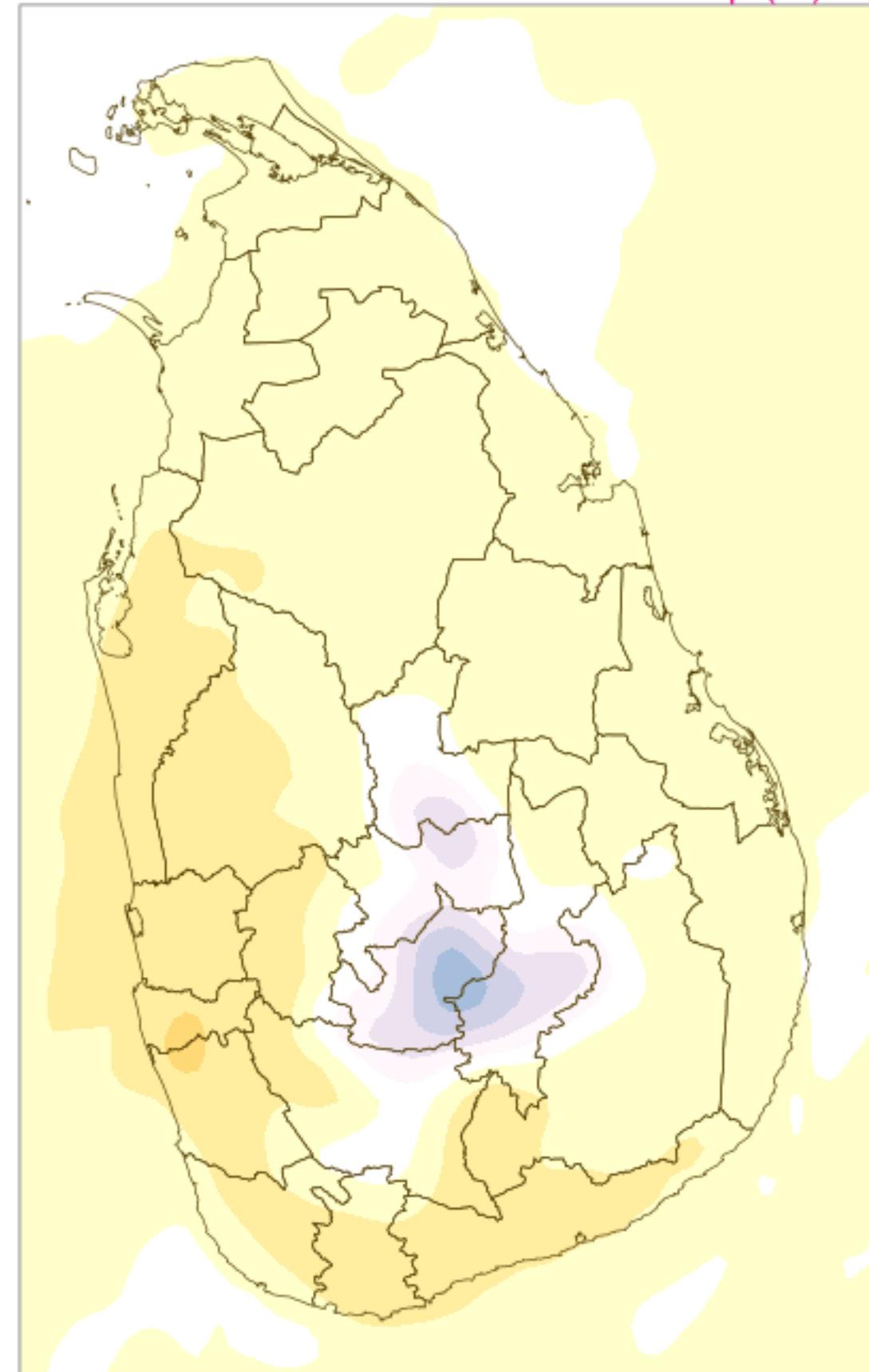
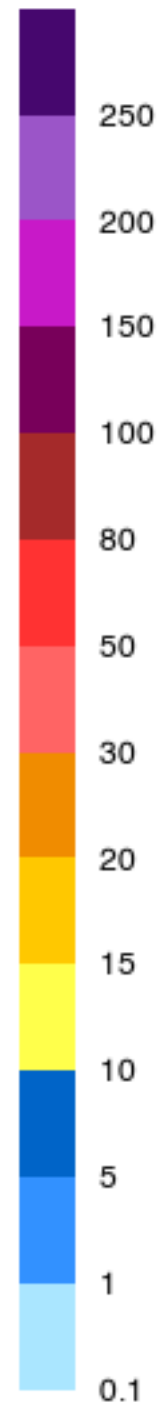
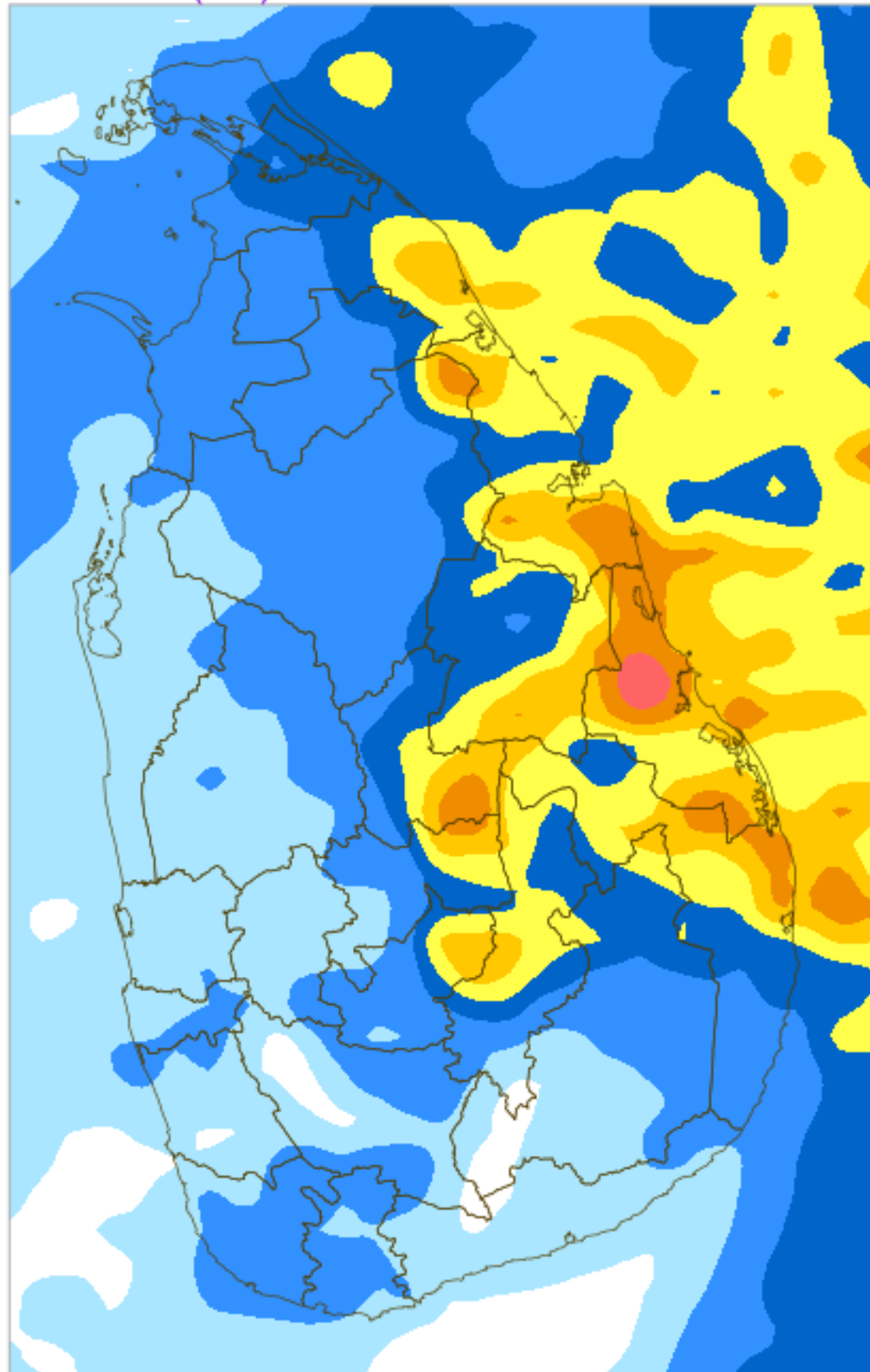
24H RAINFALL (mm) & MAXIMUM 2m TEMPERATURE (°C) FORECAST (24h)

For 24 hours ending at 8.30AM 27 DEC 2023

(Based on ECMWF (op1) model initialized at 00UTC 26 DEC 2023)

Rainfall (mm)

Max 2m Temp. (°C)



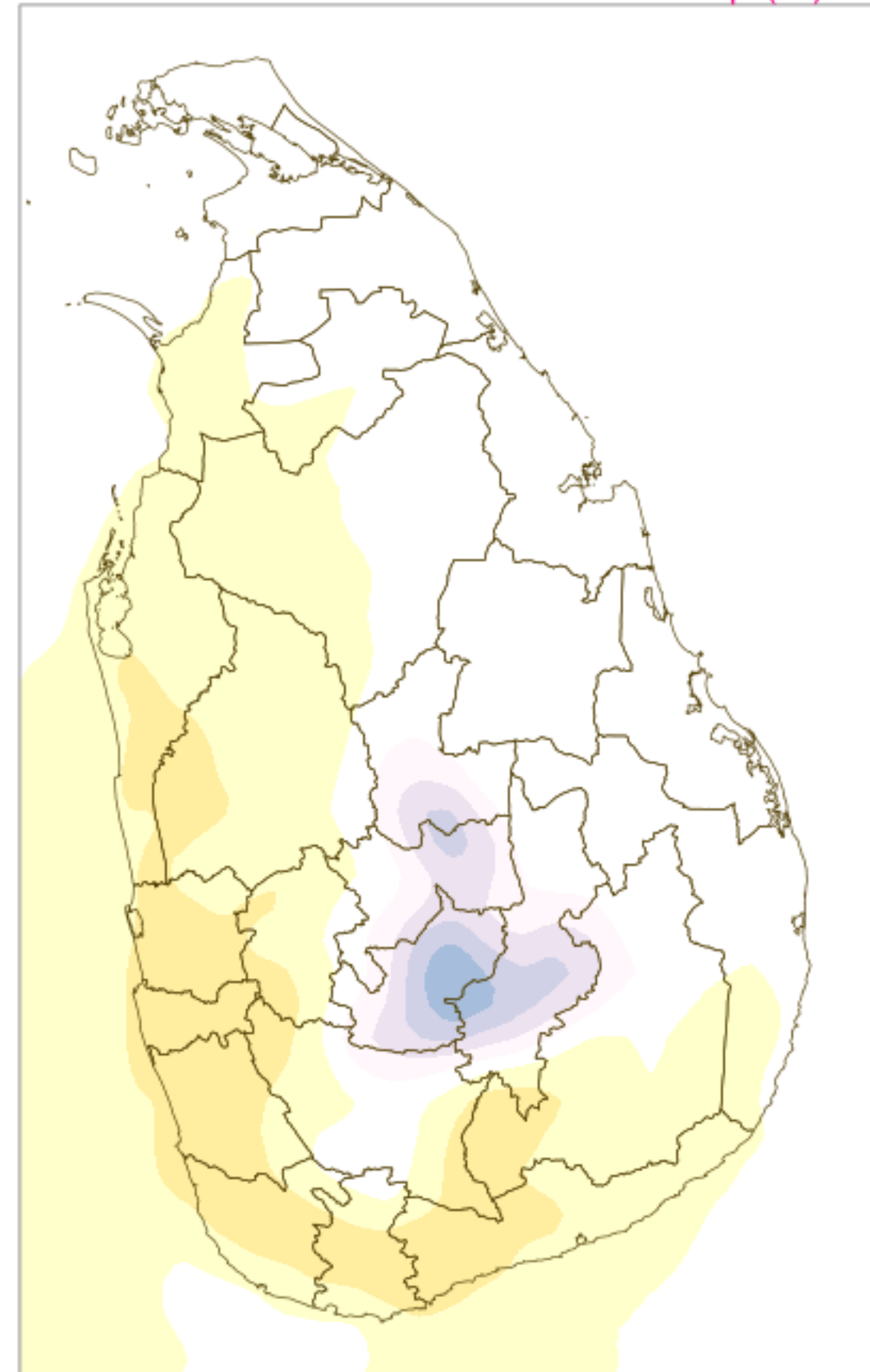
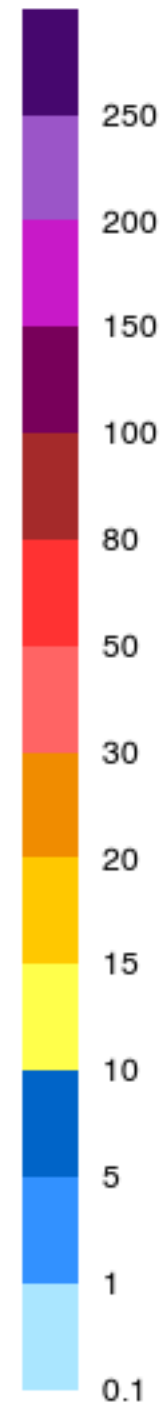
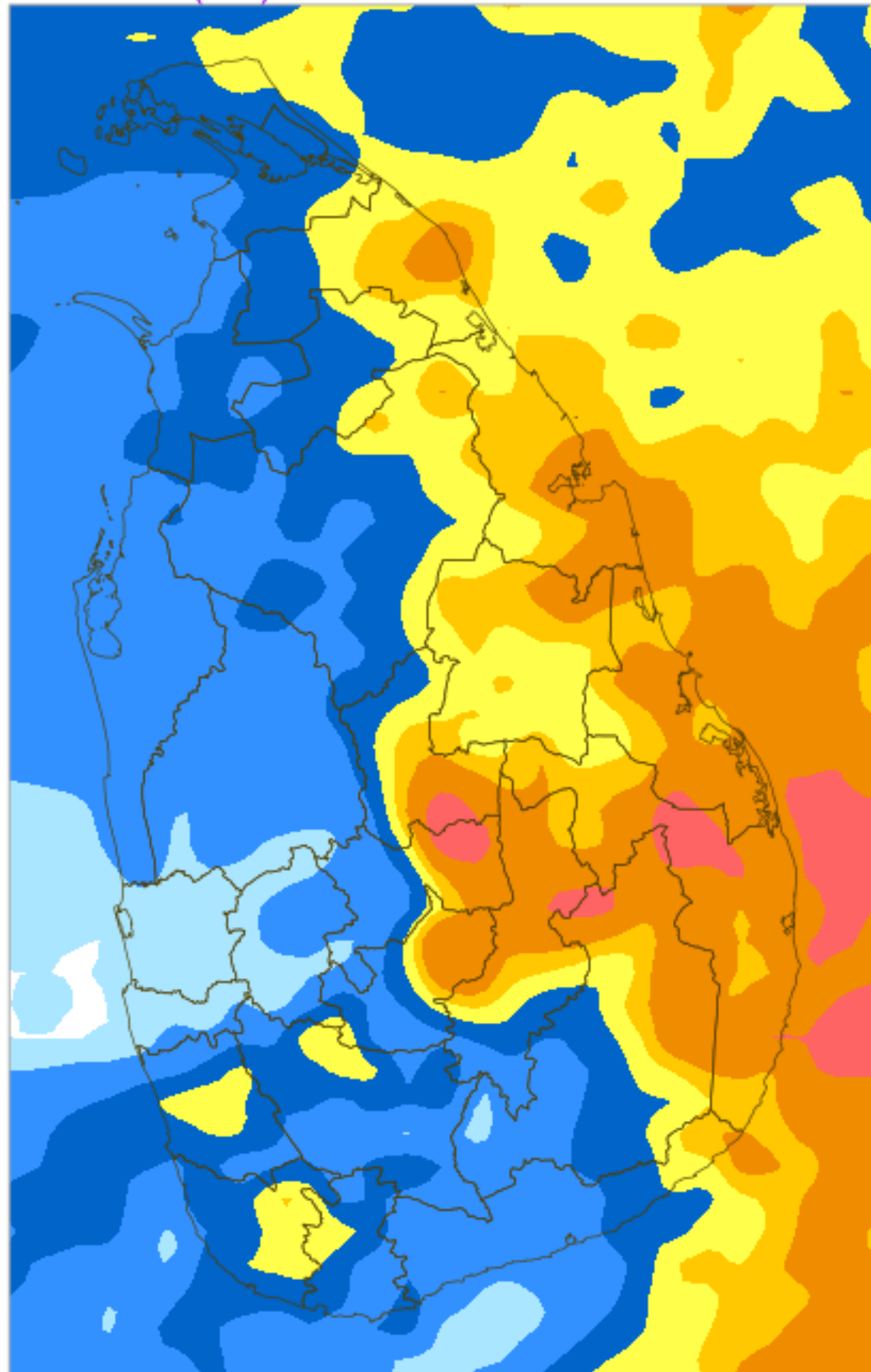
24H RAINFALL (mm) & MAXIMUM 2m TEMPERATURE (°C) FORECAST (24h)

For 24 hours ending at 8.30AM 28 DEC 2023

(Based on ECMWF (op1) model initialized at 00UTC 26 DEC 2023)

Rainfall (mm)

Max 2m Temp. (°C)



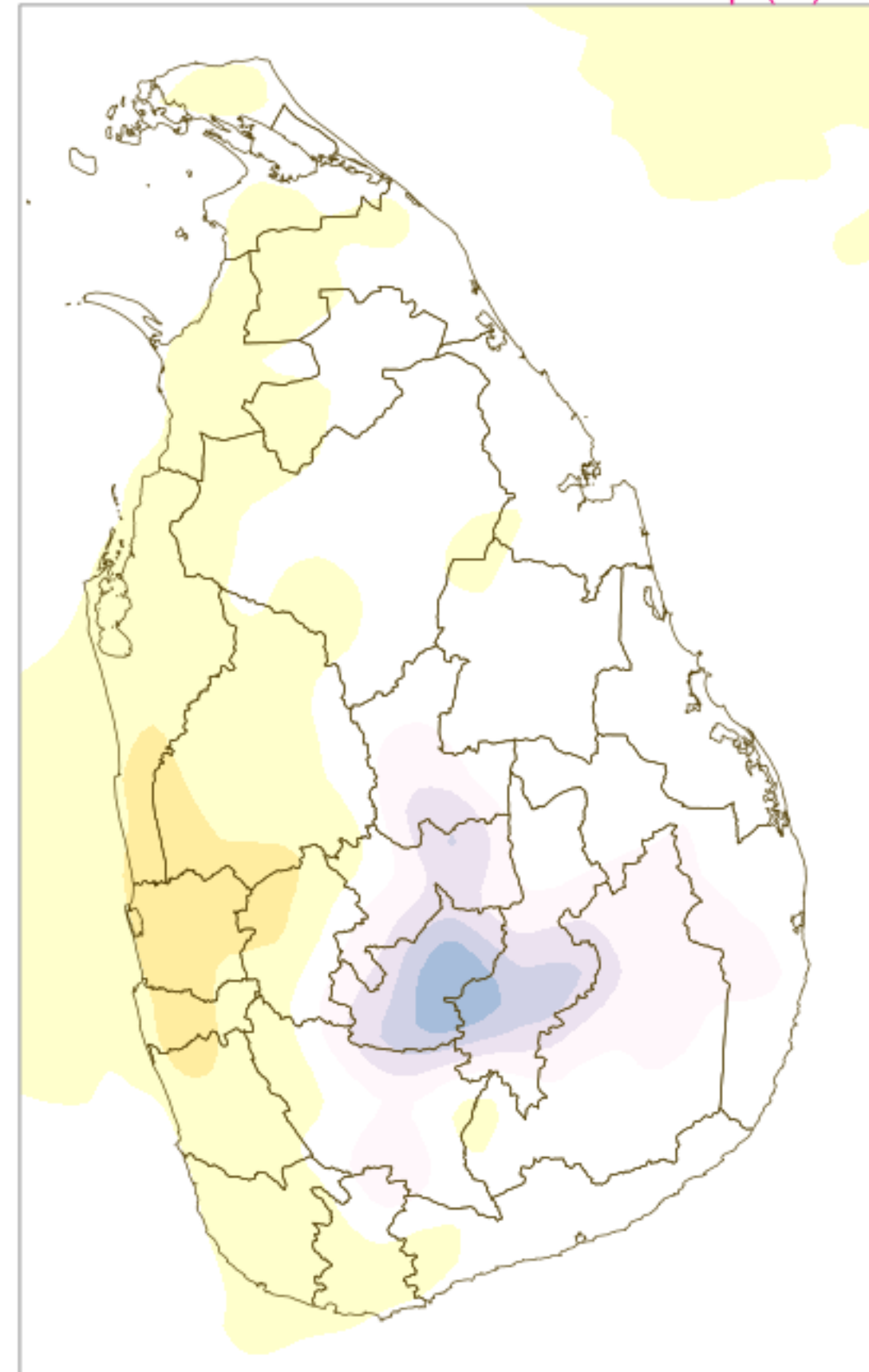
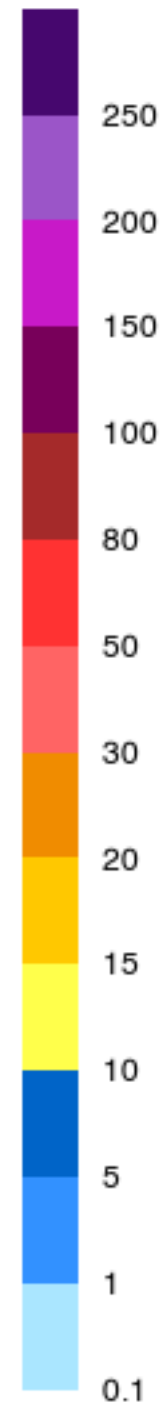
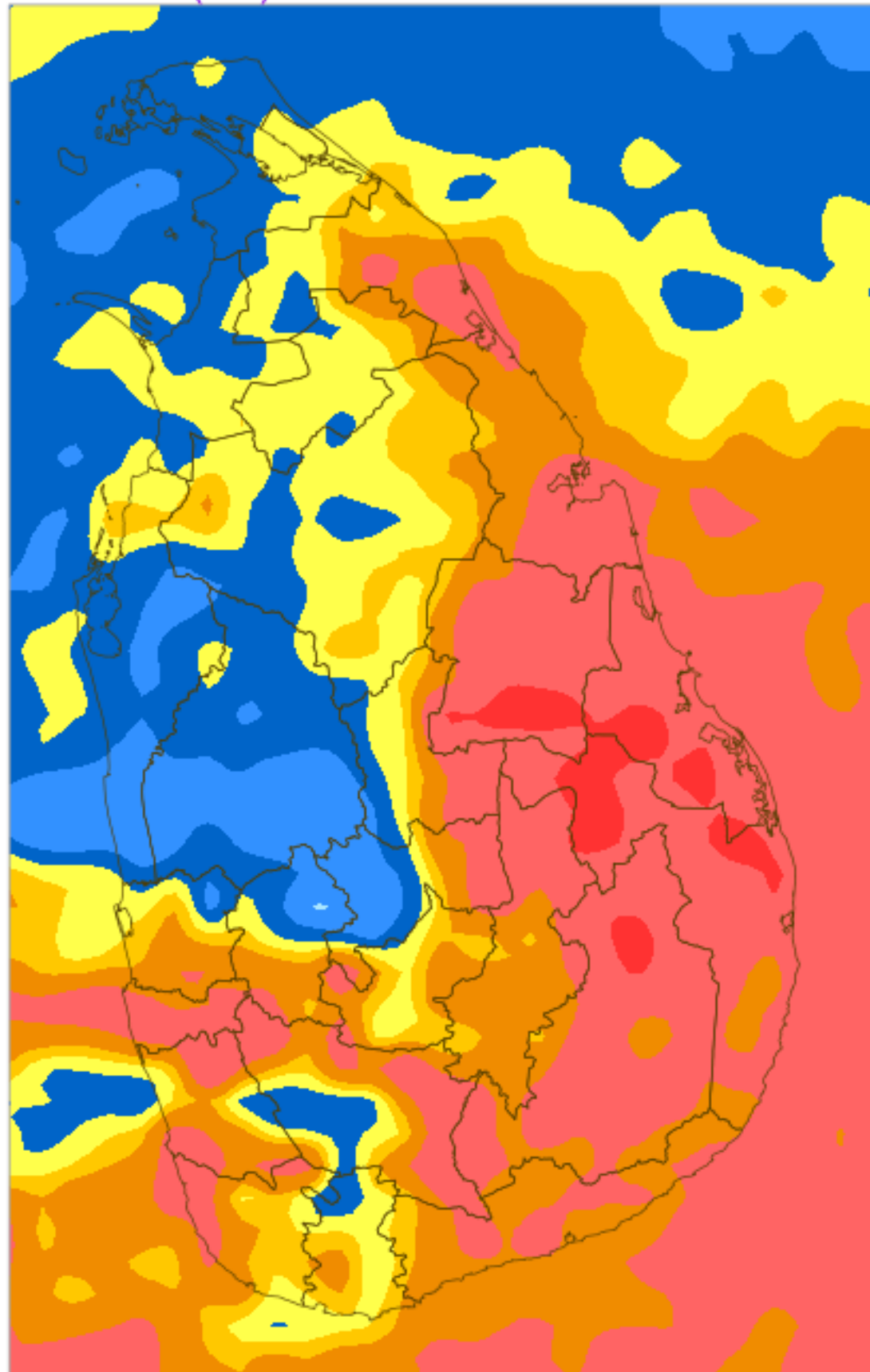
24H RAINFALL (mm) & MAXIMUM 2m TEMPERATURE (°C) FORECAST (24h)

For 24 hours ending at 8.30AM 29 DEC 2023

(Based on ECMWF (op1) model initialized at 00UTC 26 DEC 2023)

Rainfall (mm)

Max 2m Temp. (°C)



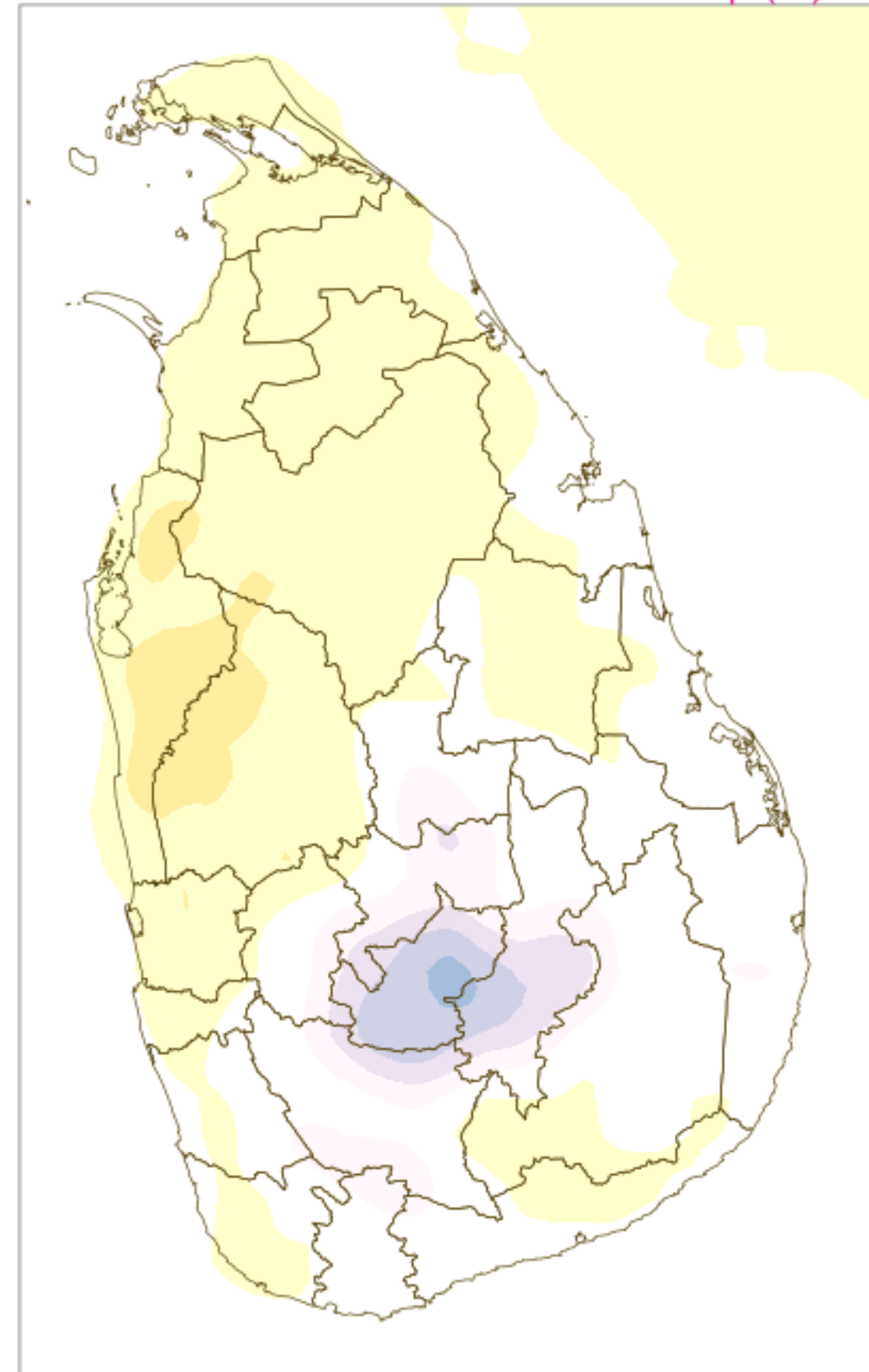
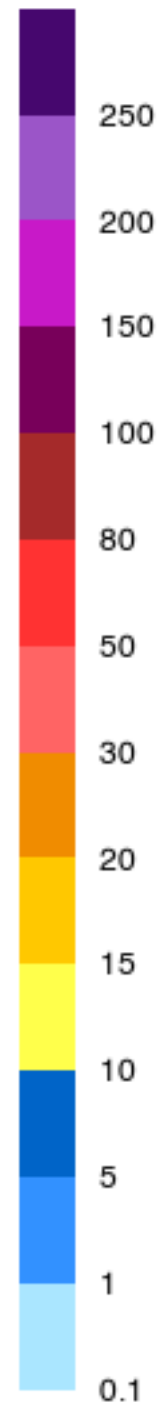
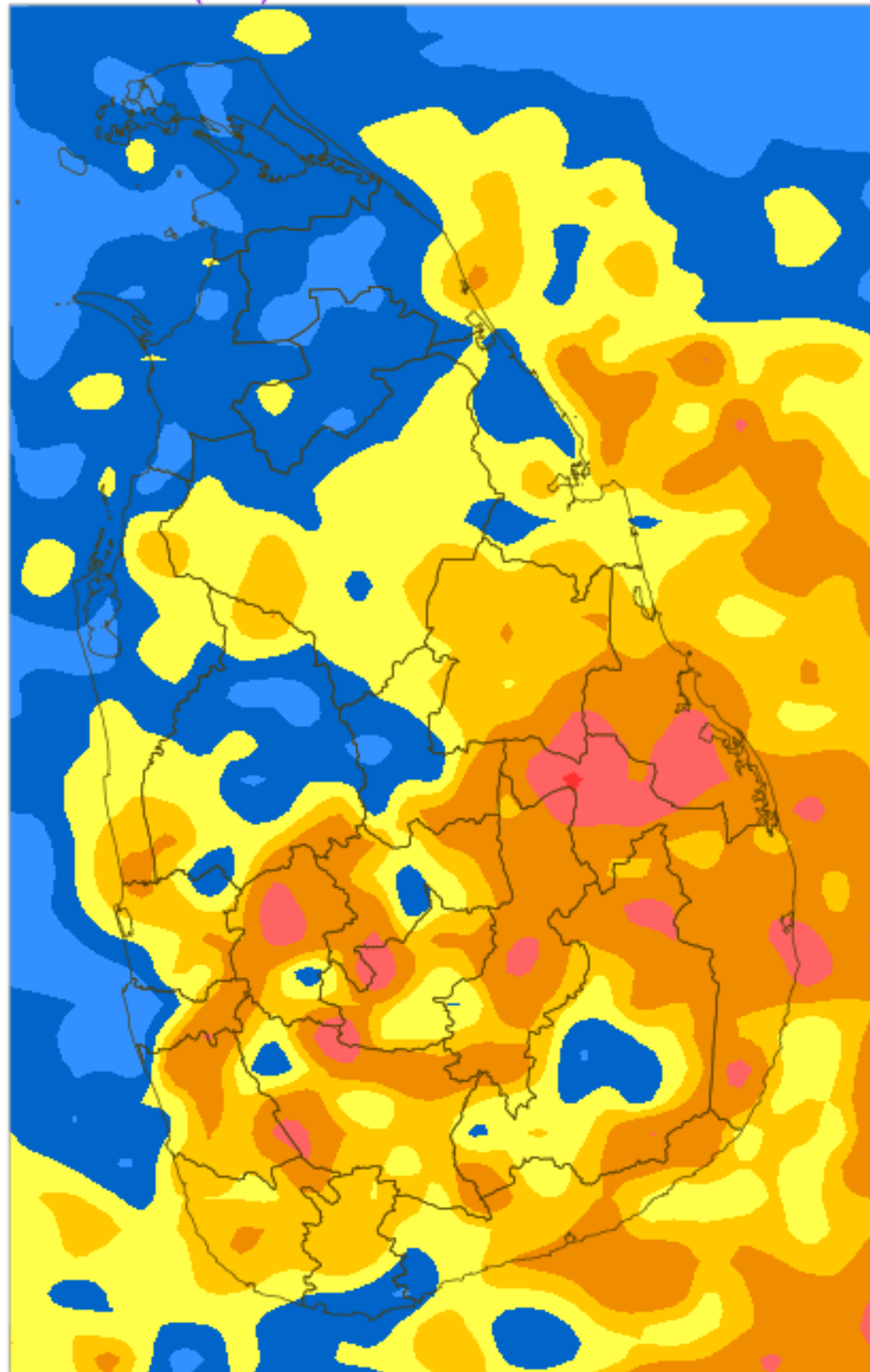
24H RAINFALL (mm) & MAXIMUM 2m TEMPERATURE (°C) FORECAST (24h)

For 24 hours ending at 8.30AM 30 DEC 2023

(Based on ECMWF (op1) model initialized at 00UTC 26 DEC 2023)

Rainfall (mm)

Max 2m Temp. (°C)



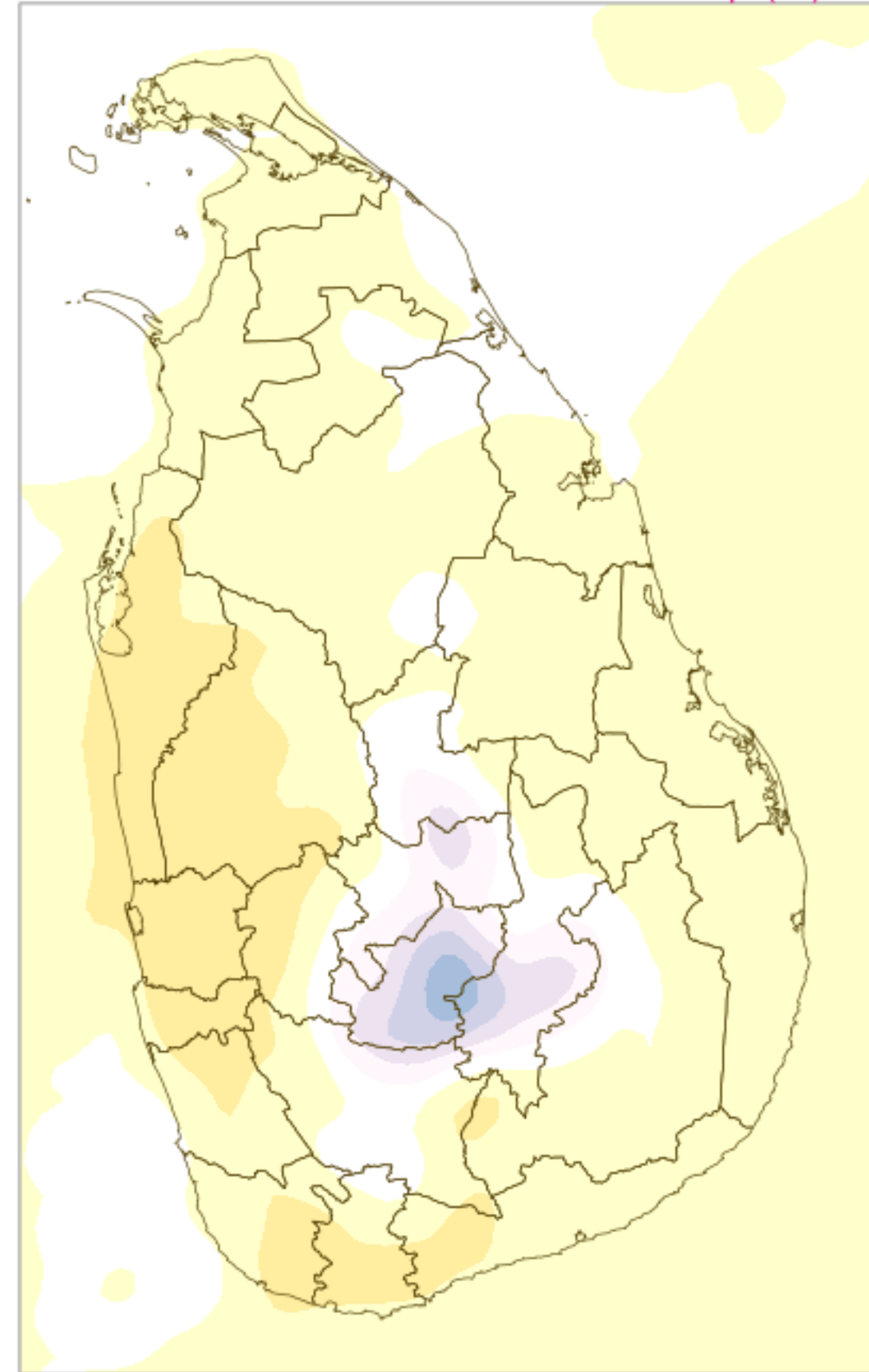
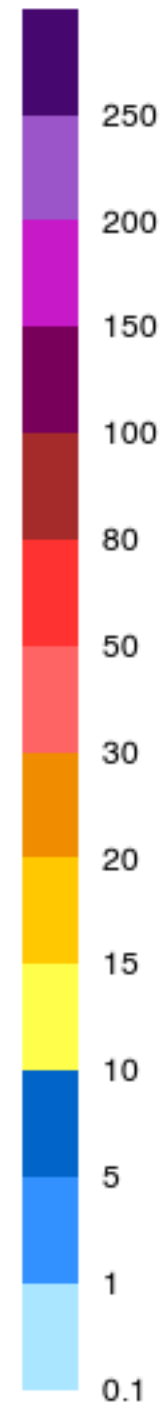
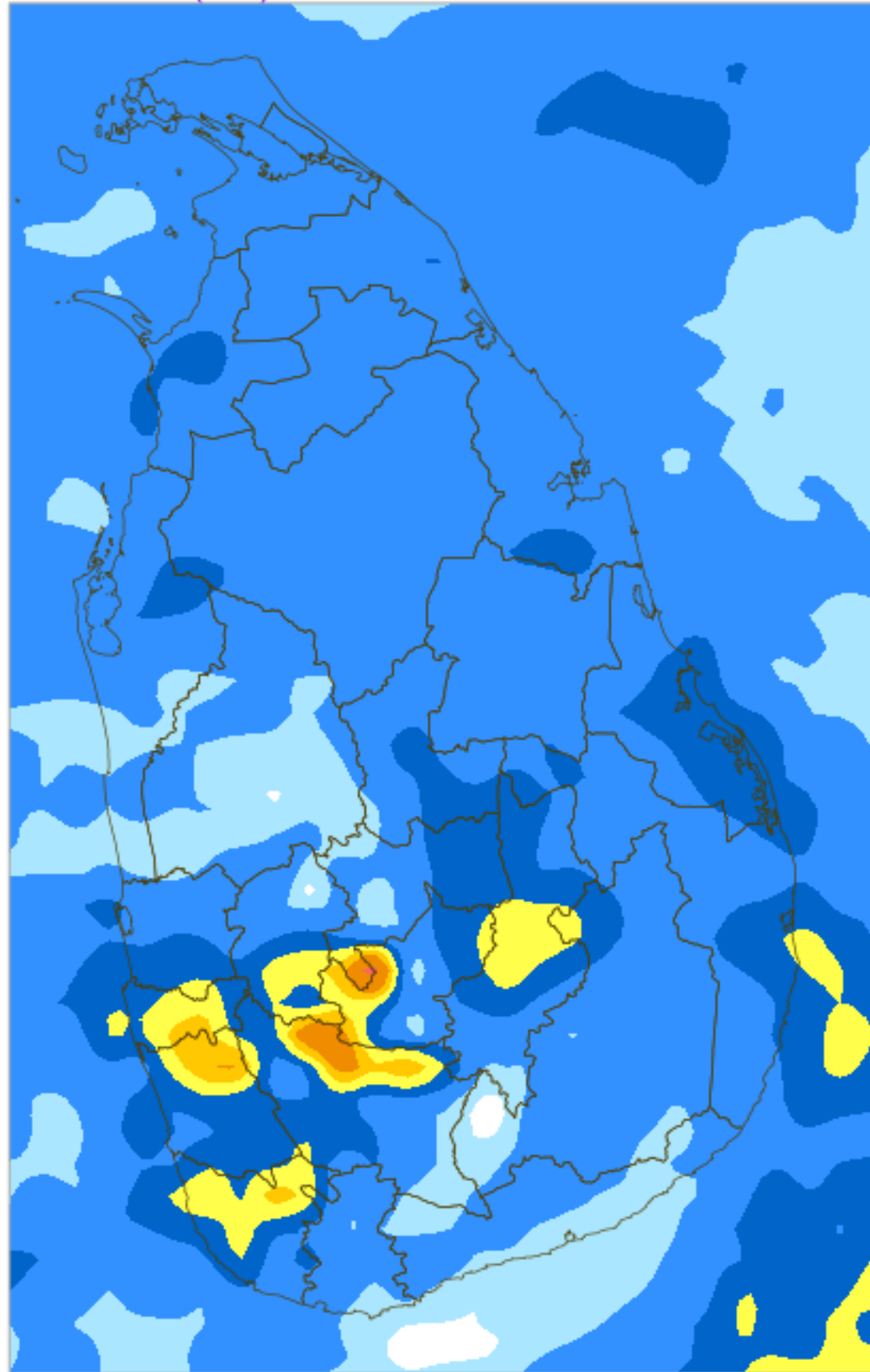
24H RAINFALL (mm) & MAXIMUM 2m TEMPERATURE (°C) FORECAST (24h)

For 24 hours ending at 8.30AM 31 DEC 2023

(Based on ECMWF (op1) model initialized at 00UTC 26 DEC 2023)

Rainfall (mm)

Max 2m Temp. (°C)



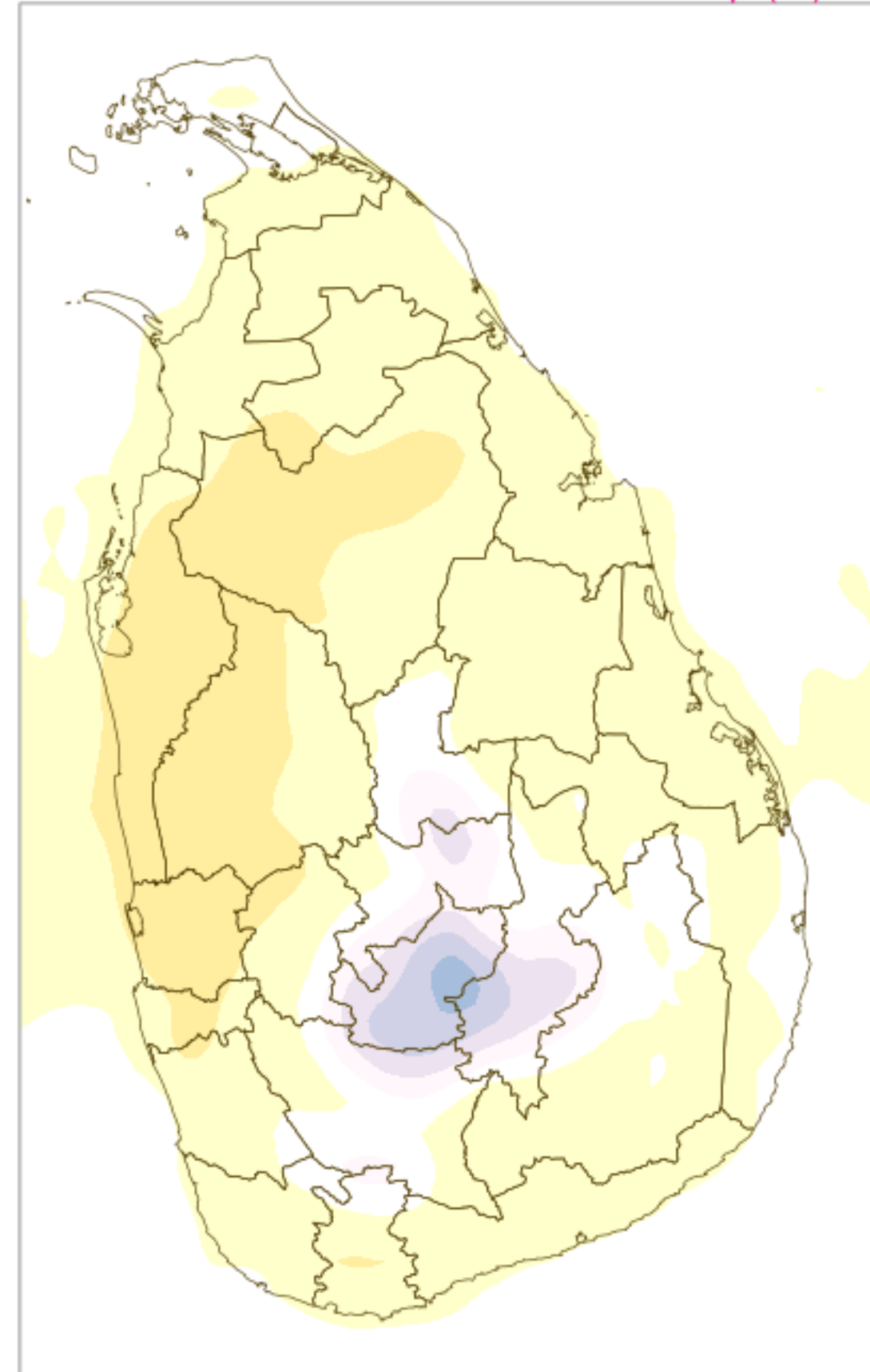
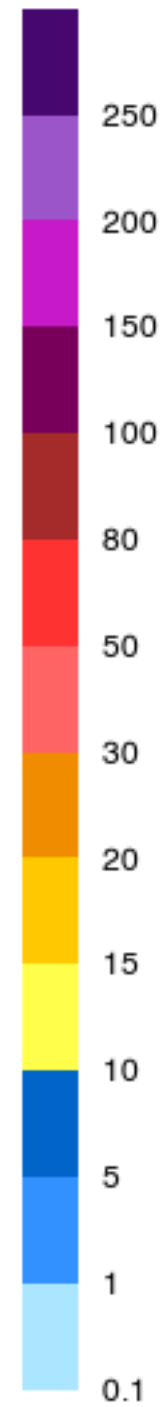
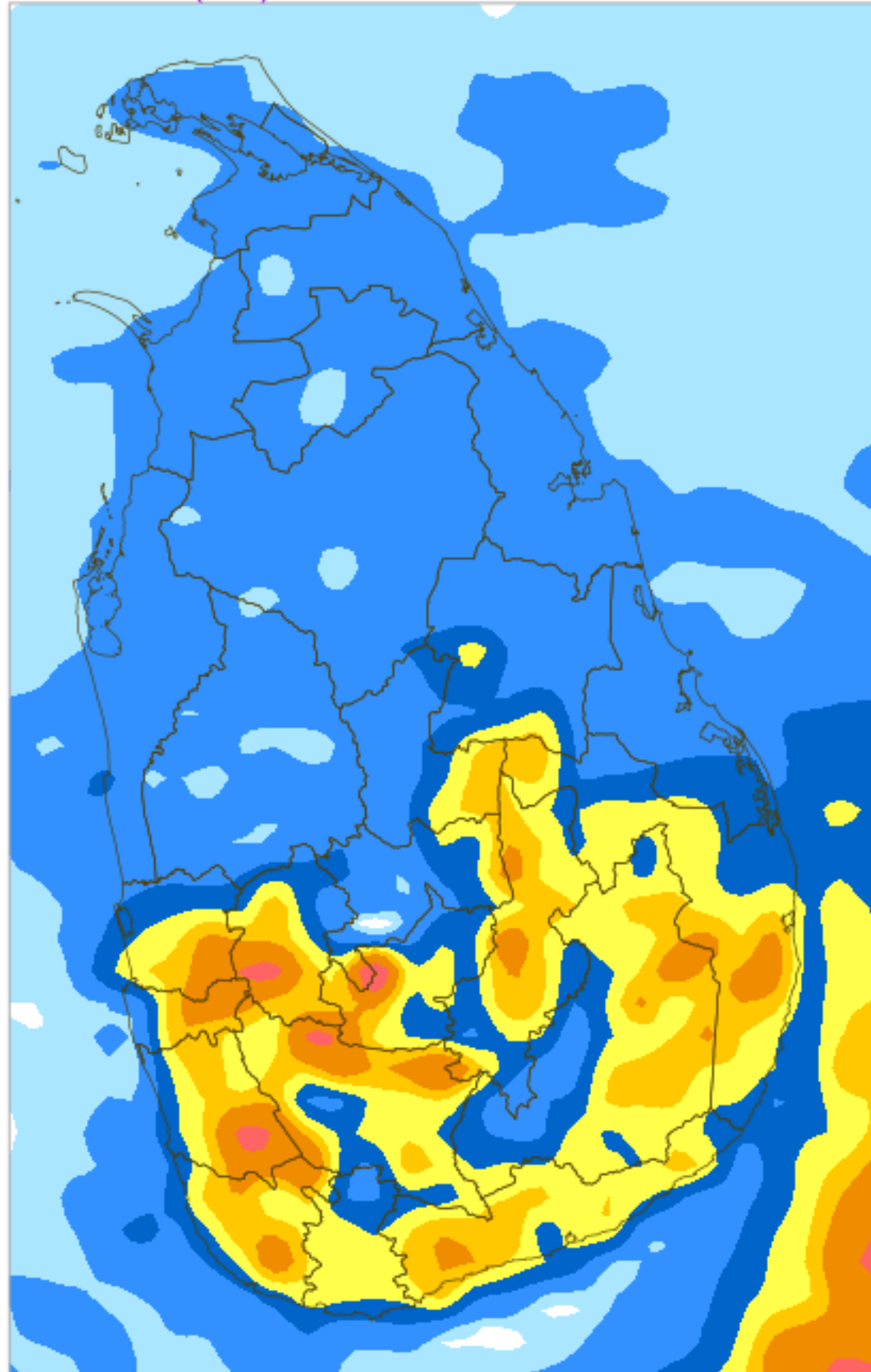
24H RAINFALL (mm) & MAXIMUM 2m TEMPERATURE (°C) FORECAST (24h)

For 24 hours ending at 8.30AM 01 JAN 2024

(Based on ECMWF (op1) model initialized at 00UTC 26 DEC 2023)

Rainfall (mm)

Max 2m Temp. (°C)



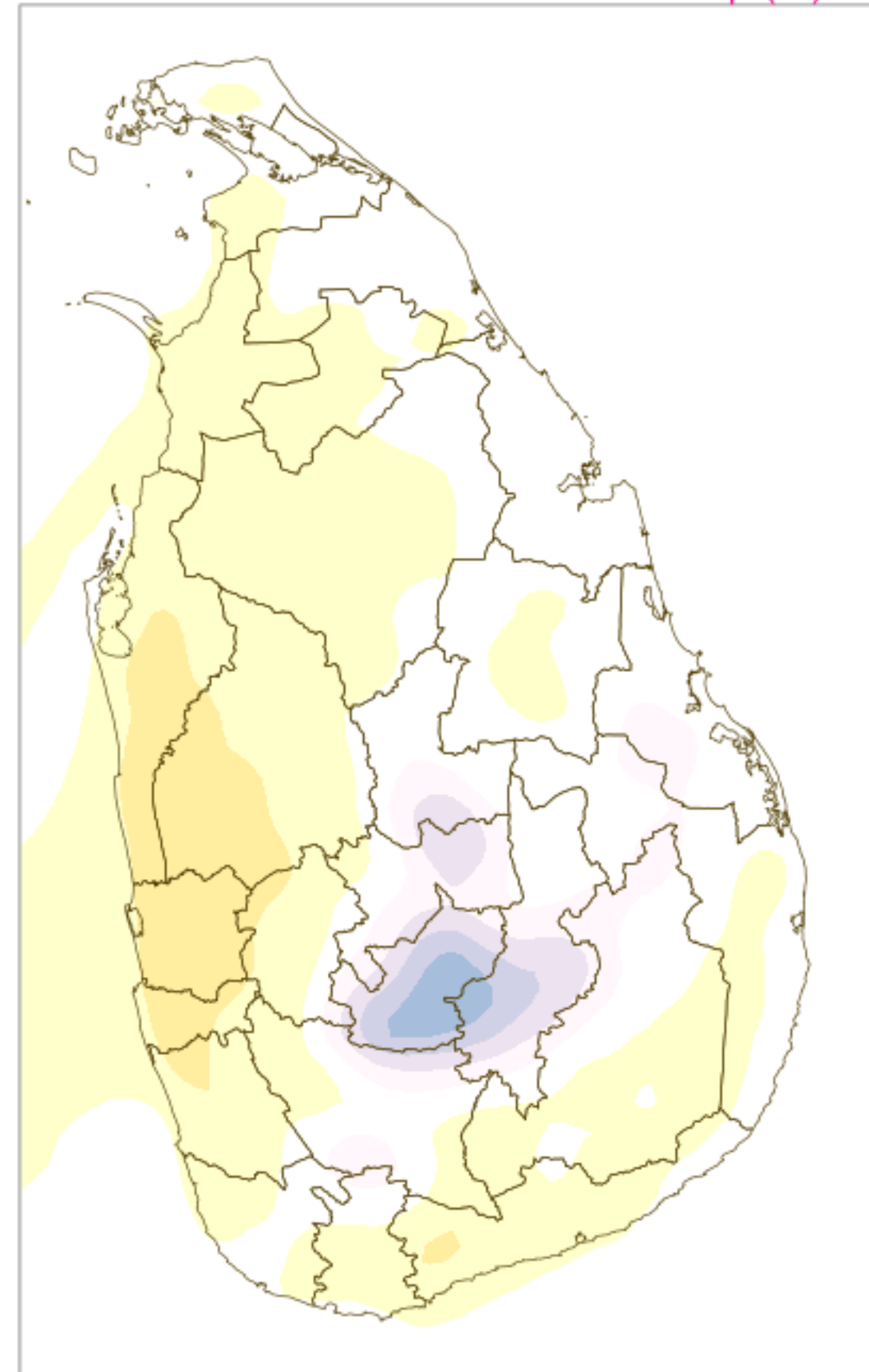
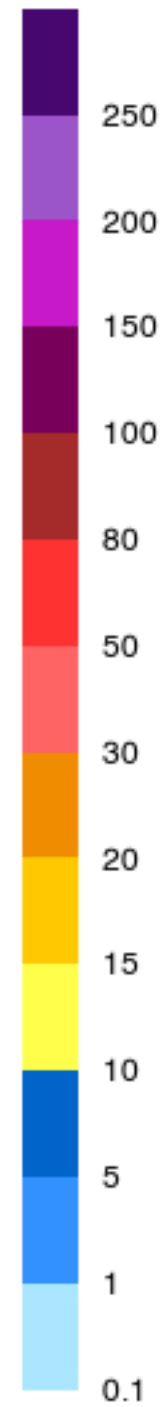
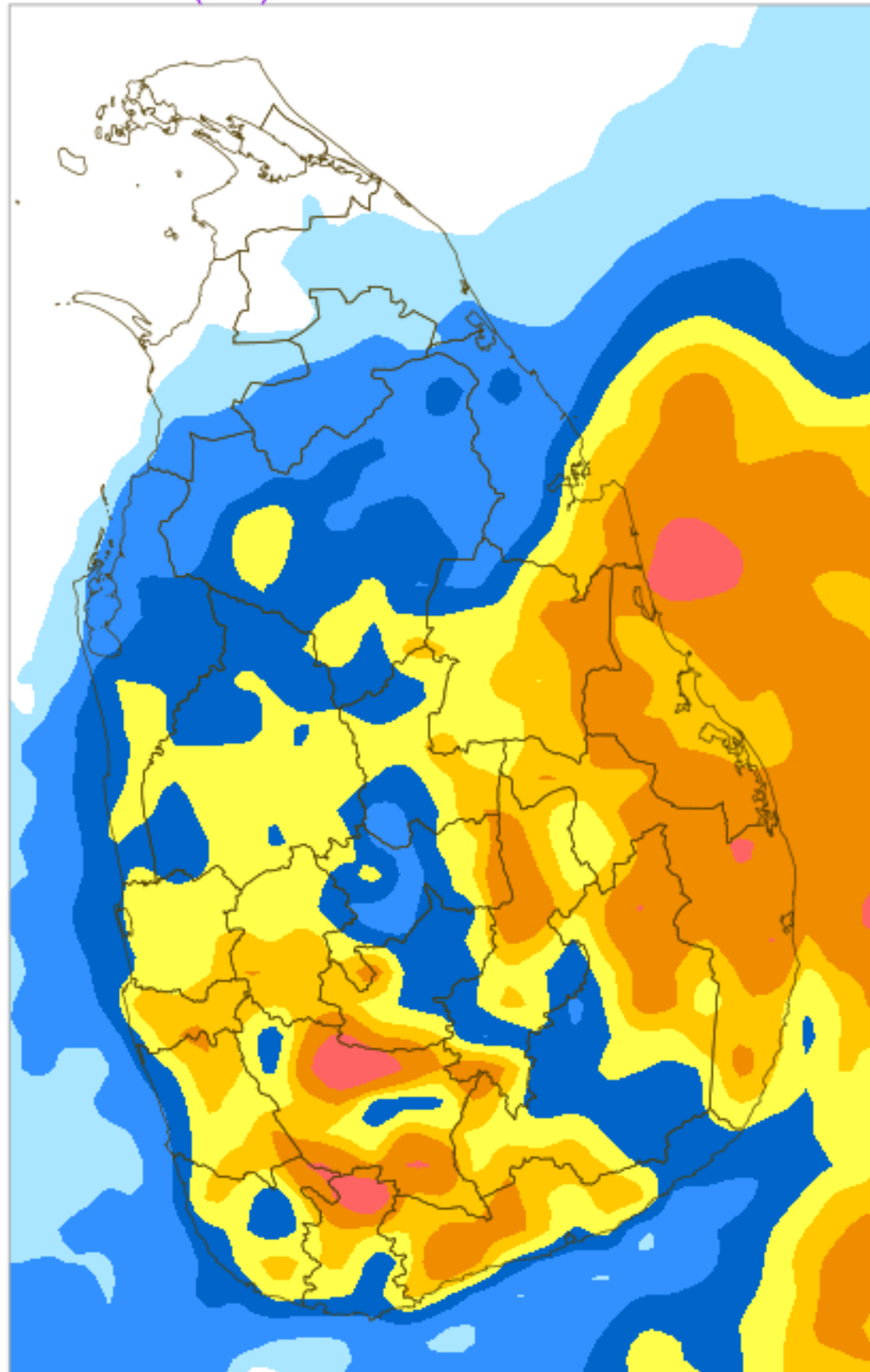
24H RAINFALL (mm) & MAXIMUM 2m TEMPERATURE (°C) FORECAST (24h)

For 24 hours ending at 8.30AM 02 JAN 2024

(Based on ECMWF (op1) model initialized at 00UTC 26 DEC 2023)

Rainfall (mm)

Max 2m Temp. (°C)



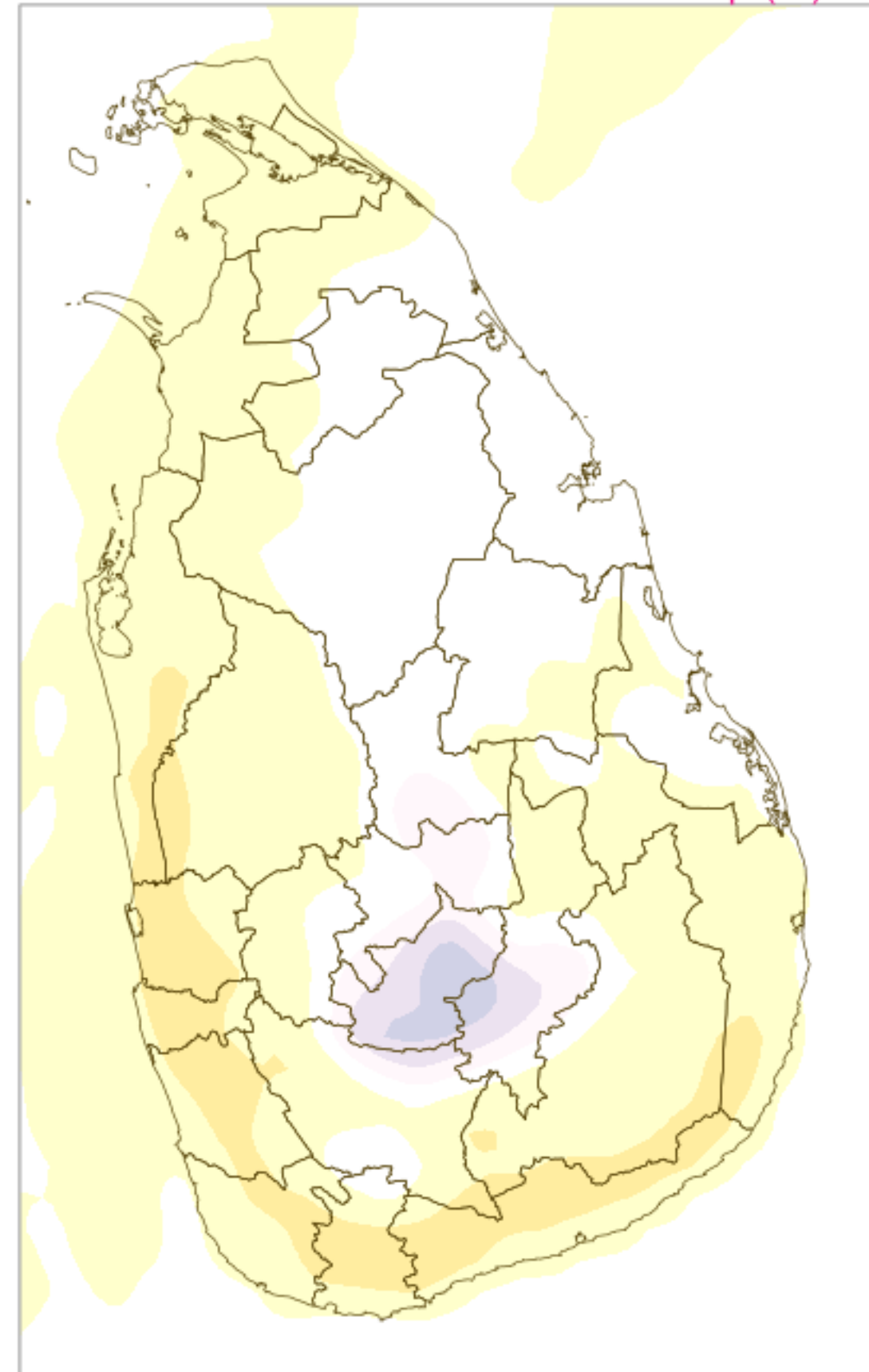
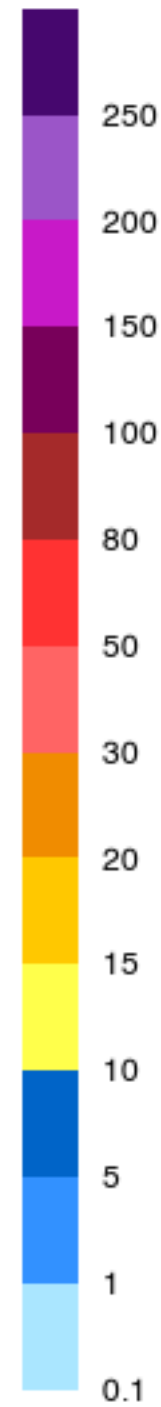
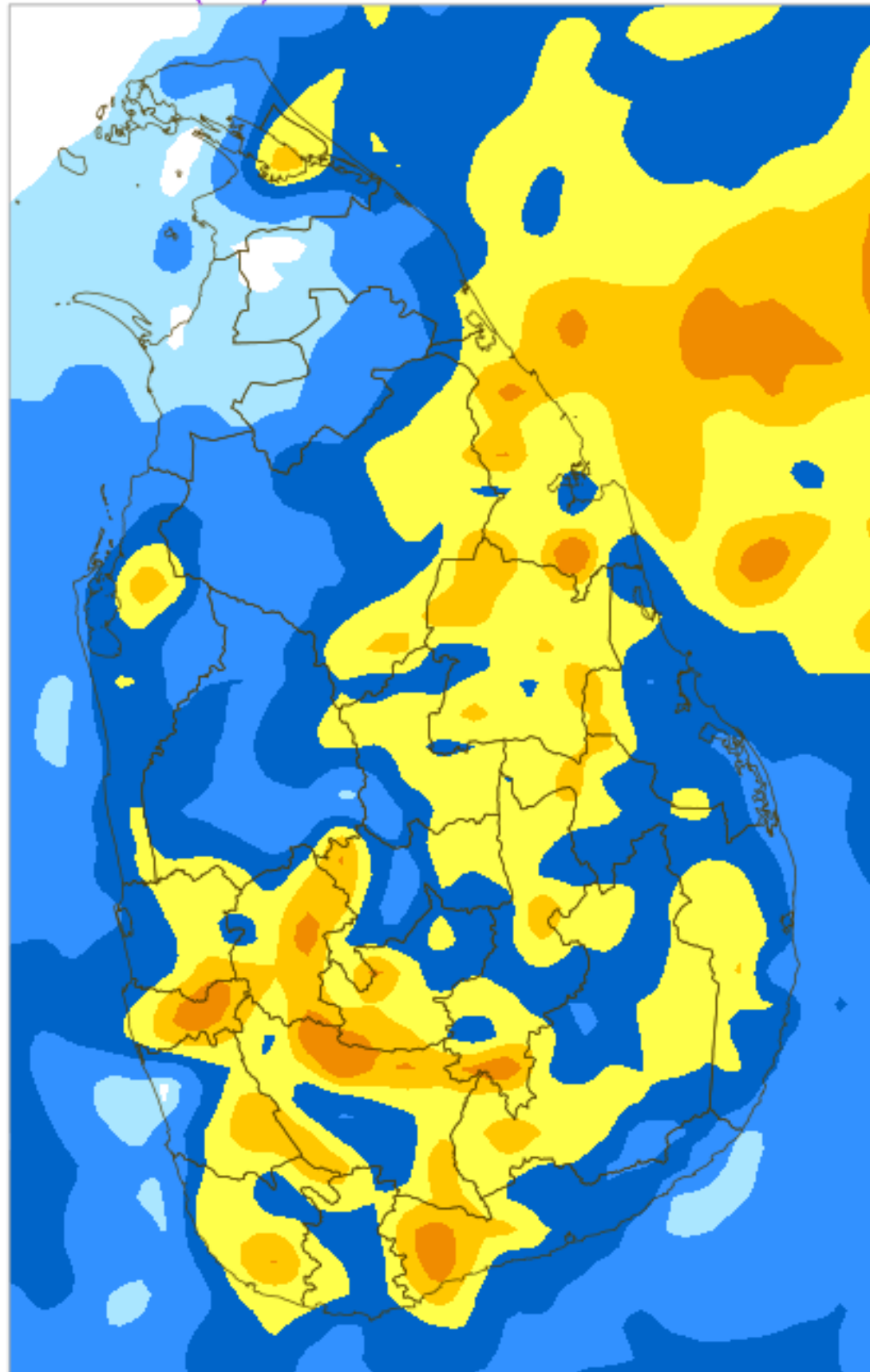
24H RAINFALL (mm) & MAXIMUM 2m TEMPERATURE (°C) FORECAST (24h)

For 24 hours ending at 8.30AM 03 JAN 2024

(Based on ECMWF (op1) model initialized at 00UTC 26 DEC 2023)

Rainfall (mm)

Max 2m Temp. (°C)



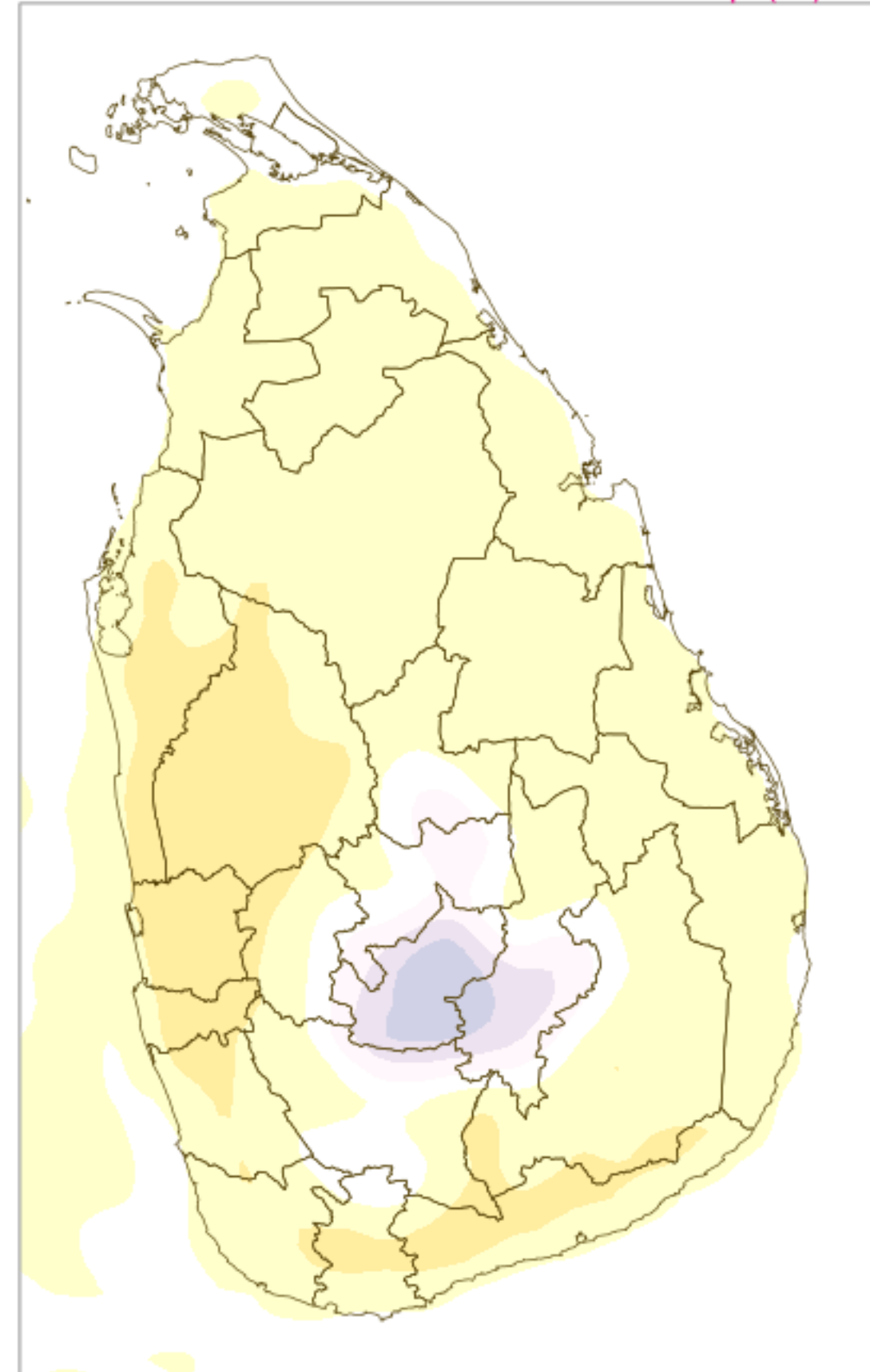
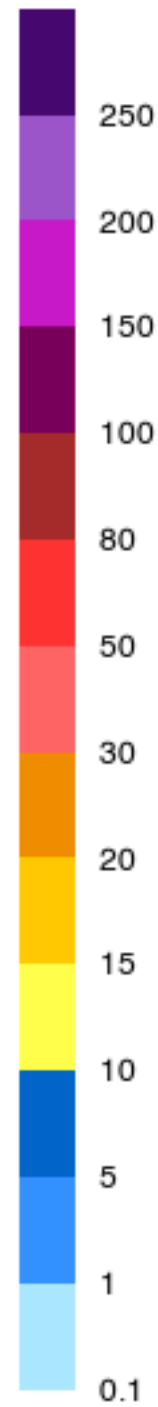
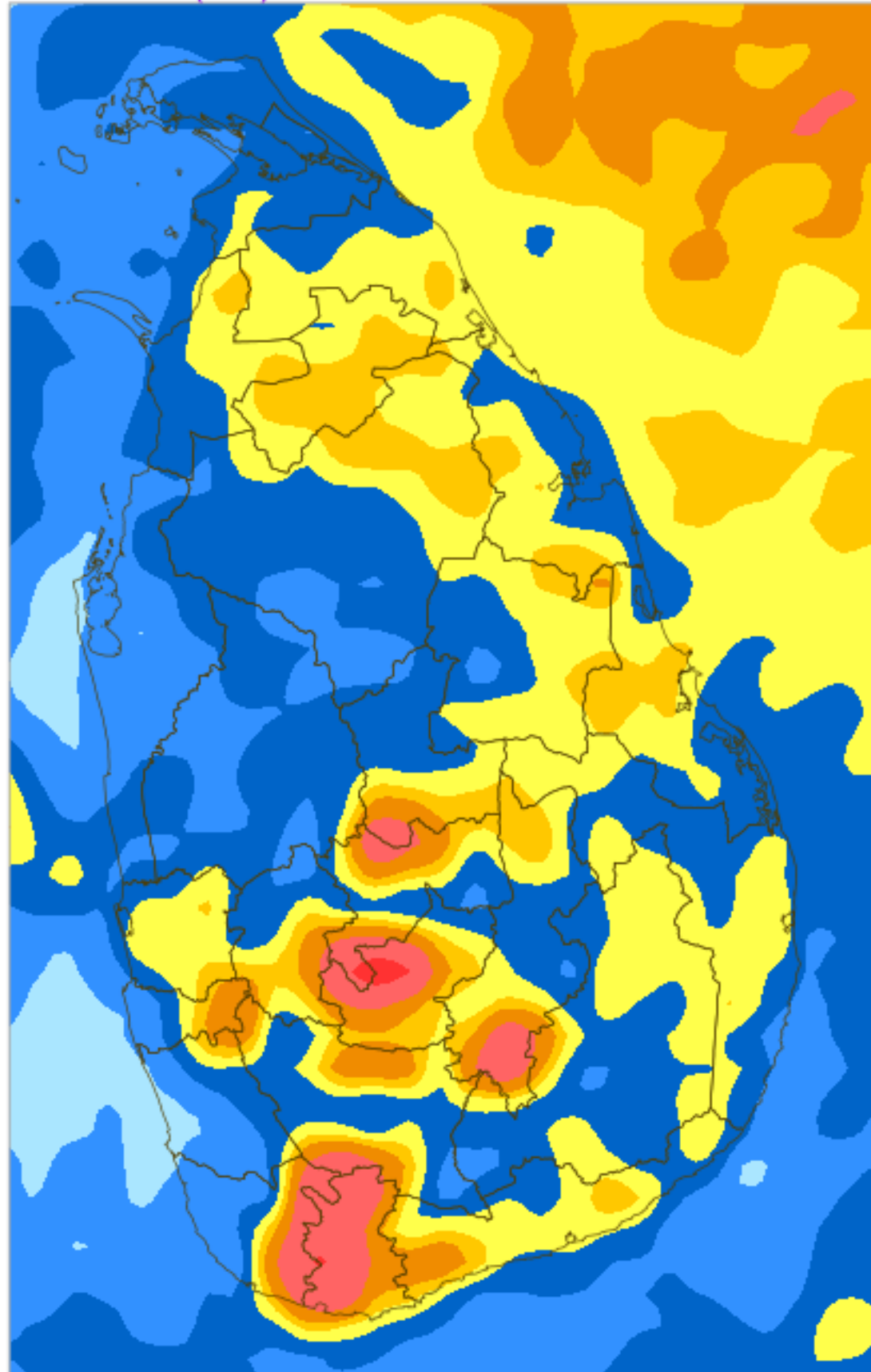
24H RAINFALL (mm) & MAXIMUM 2m TEMPERATURE (°C) FORECAST (24h)

For 24 hours ending at 8.30AM 04 JAN 2024

(Based on ECMWF (op1) model initialized at 00UTC 26 DEC 2023)

Rainfall (mm)

Max 2m Temp. (°C)



24H RAINFALL (mm) & MAXIMUM 2m TEMPERATURE (°C) FORECAST (24h)

For 24 hours ending at 8.30AM 05 JAN 2024

(Based on ECMWF (op1) model initialized at 00UTC 26 DEC 2023)

Rainfall (mm)

Max 2m Temp. (°C)

