

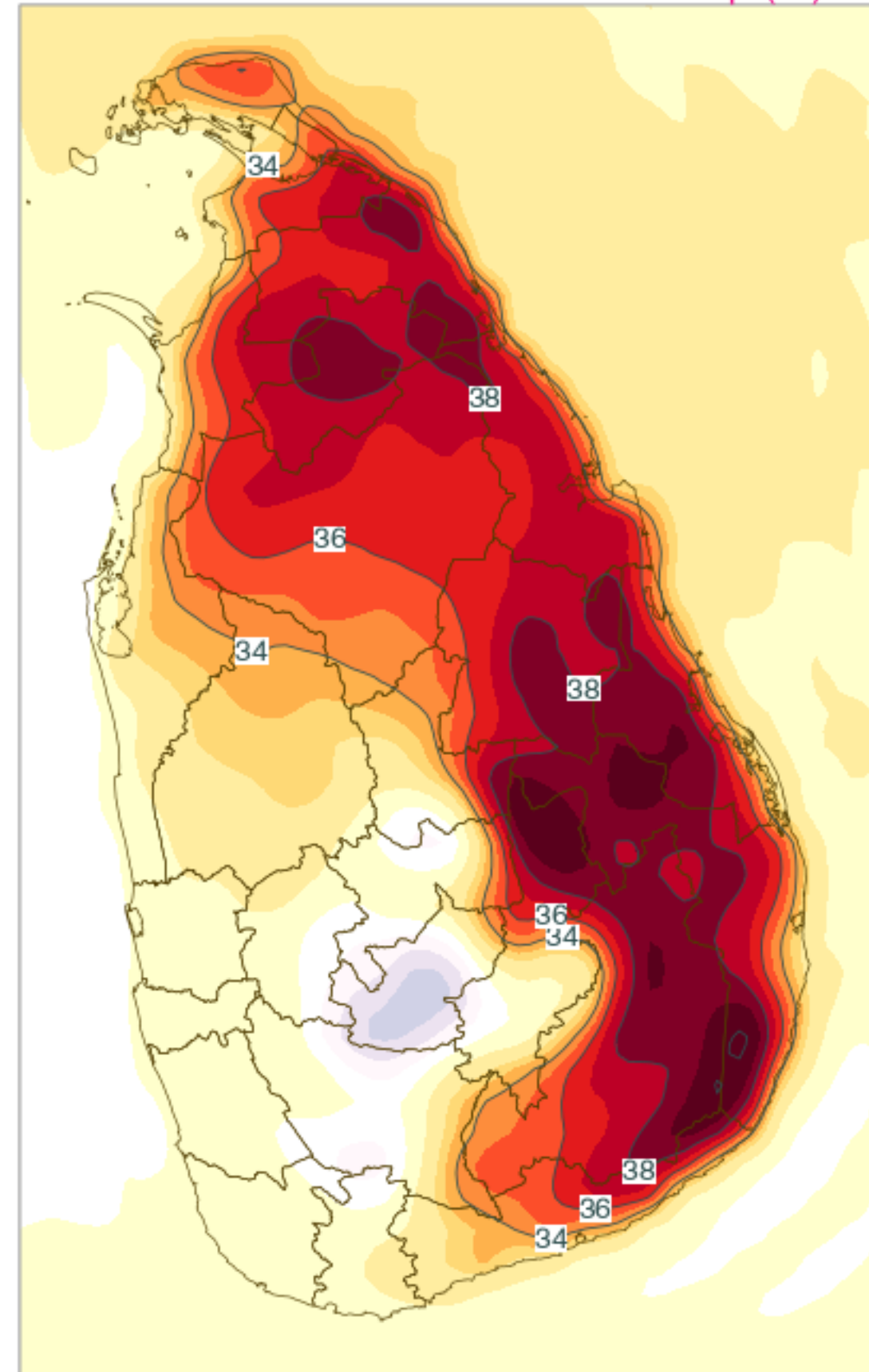
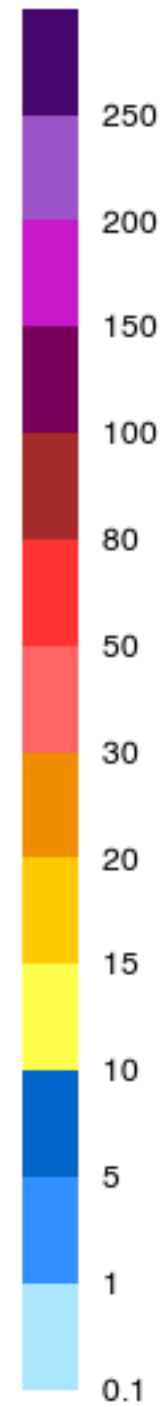
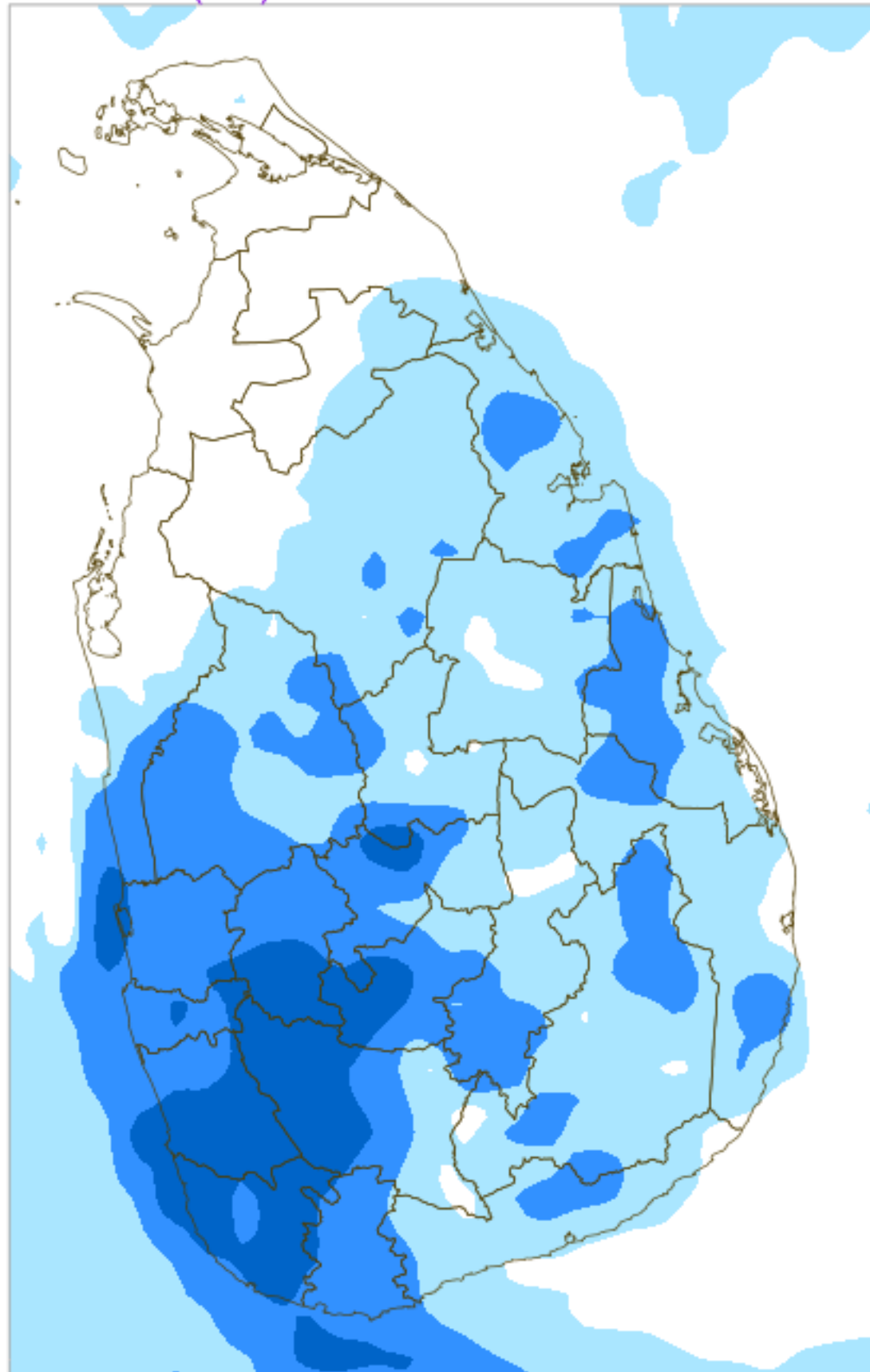
# 24H RAINFALL (mm) & MAXIMUM 2m TEMPERATURE (°C) FORECAST (24h)

For 24 hours ending at 8.30AM 31 JUL 2023

( Based on ECMWF (op1) model initialized at 00UTC 30 JUL 2023 )

Max 2m Temp. (°C)

Rainfall (mm)



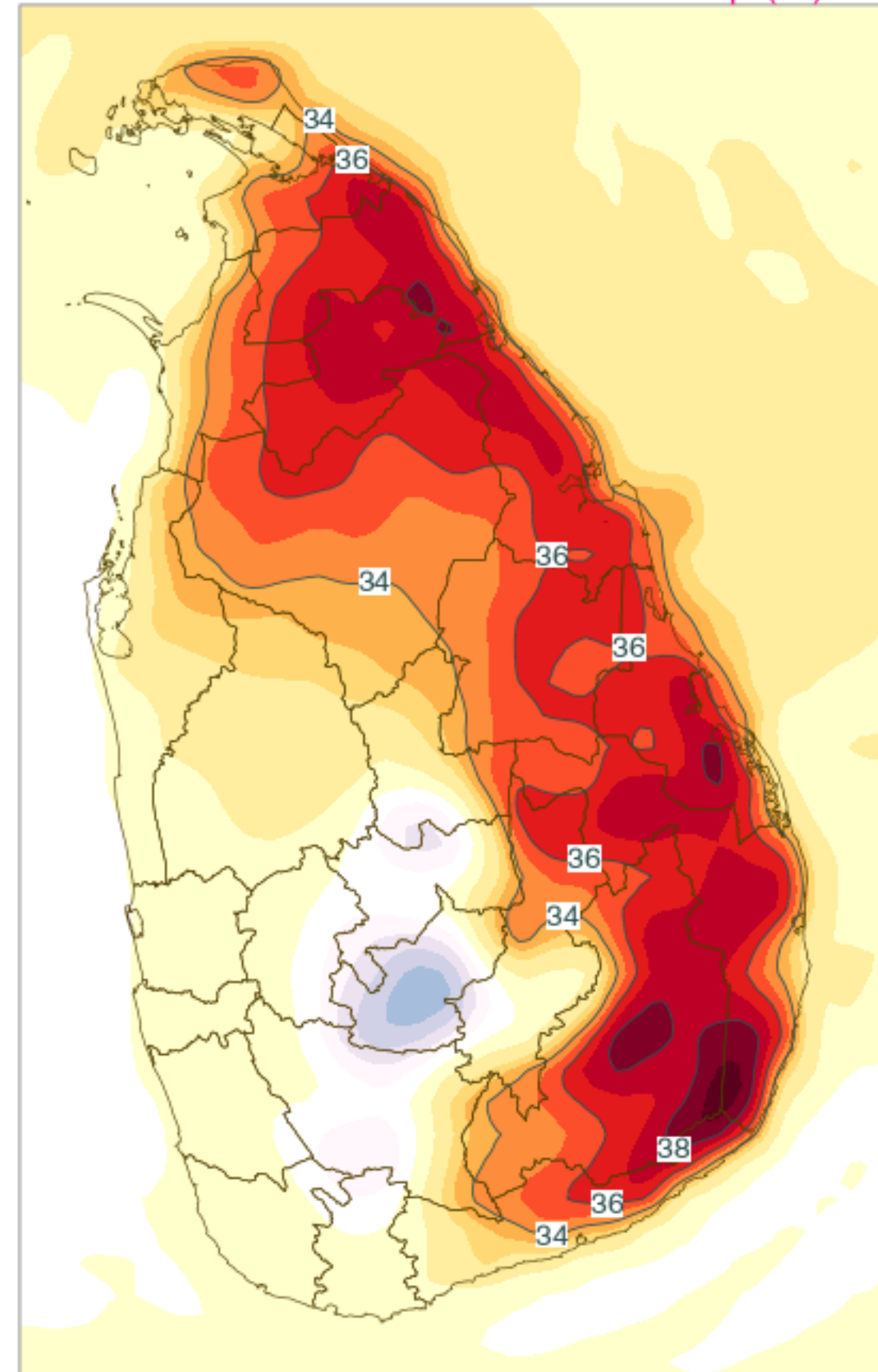
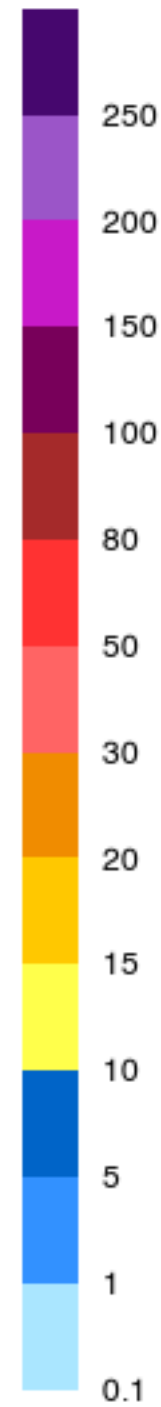
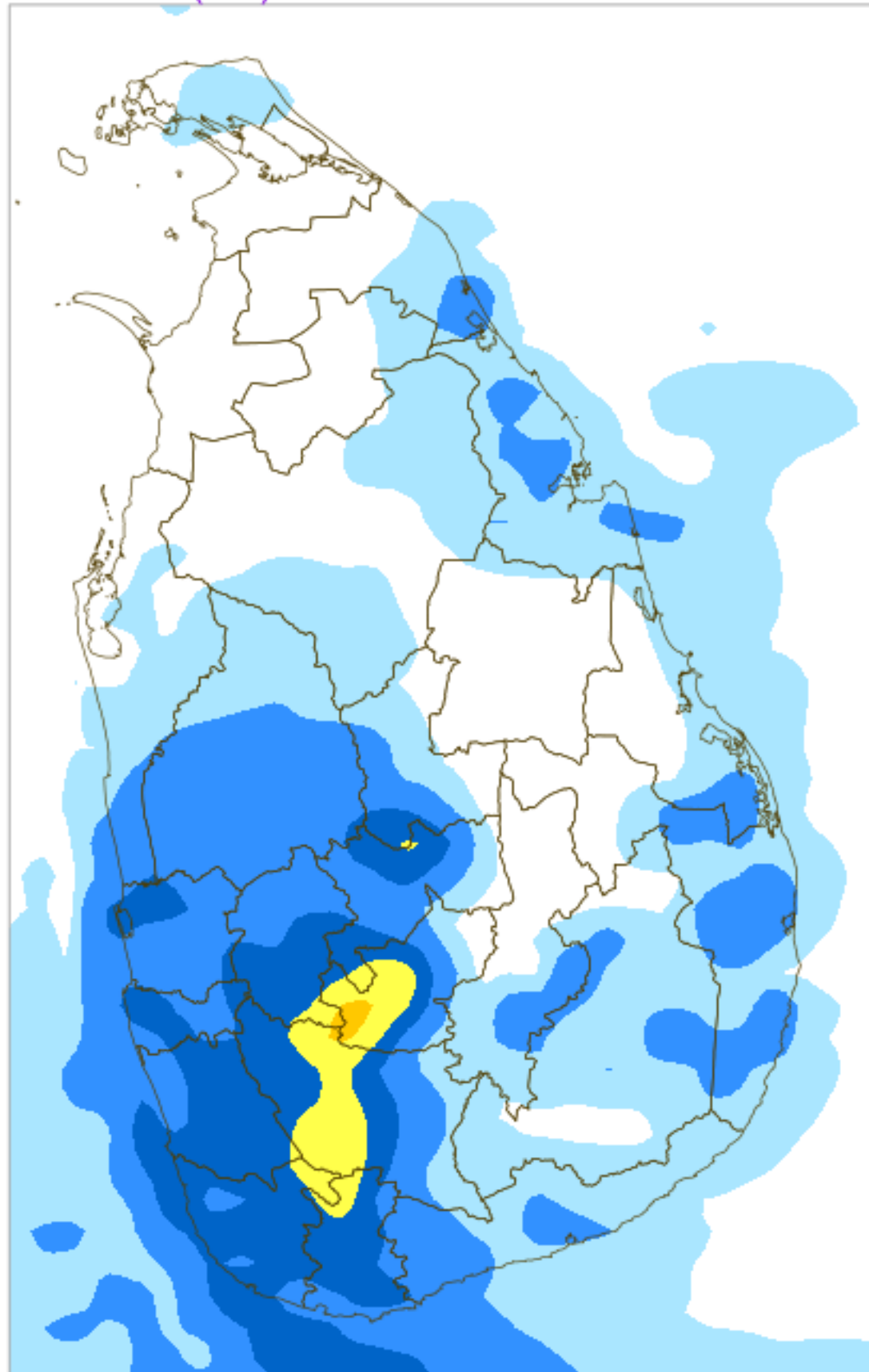
# 24H RAINFALL (mm) & MAXIMUM 2m TEMPERATURE (°C) FORECAST (24h)

For 24 hours ending at 8.30AM 01 AUG 2023

( Based on ECMWF (op1) model initialized at 00UTC 30 JUL 2023 )

Max 2m Temp. (°C)

Rainfall (mm)



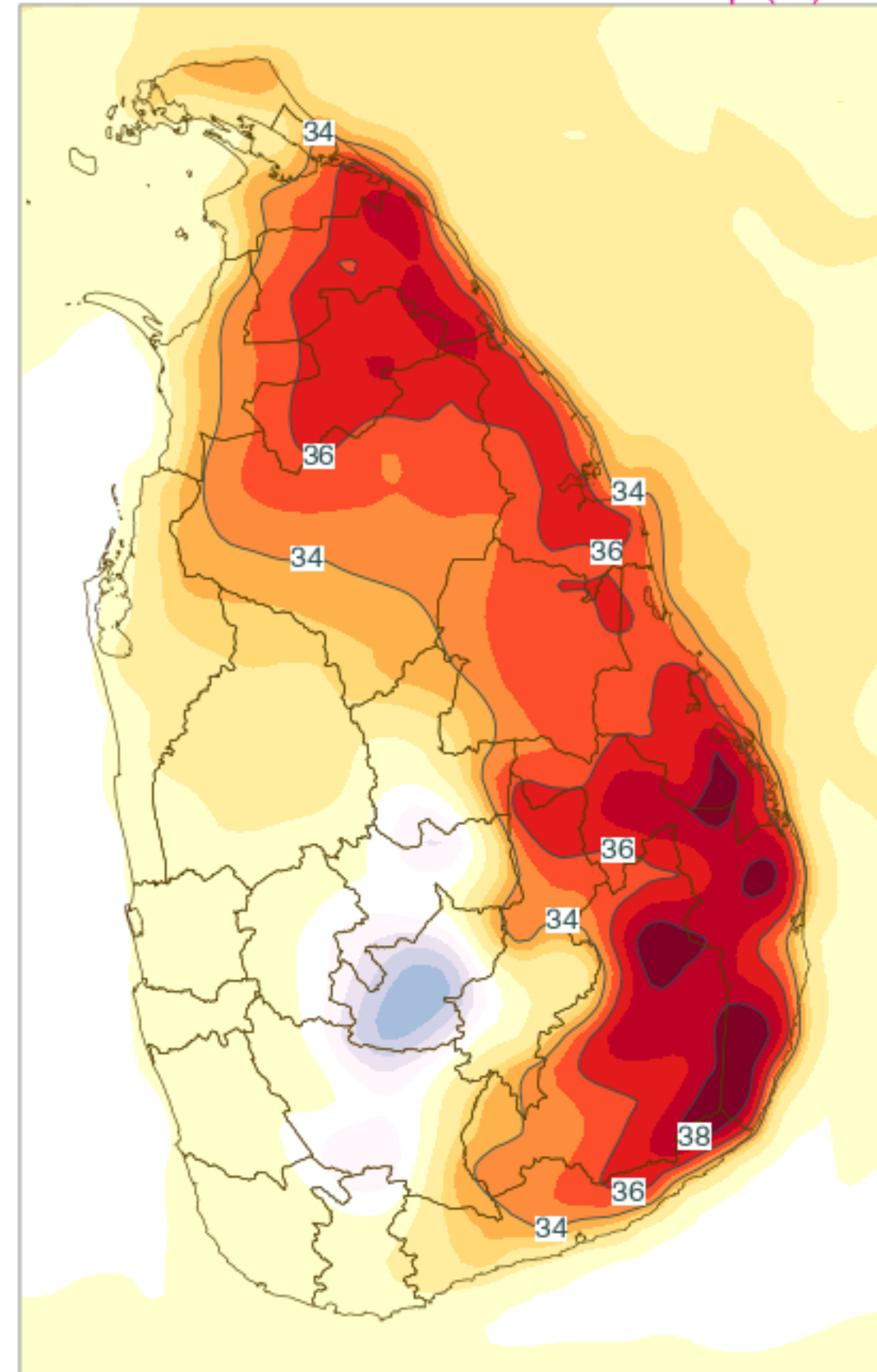
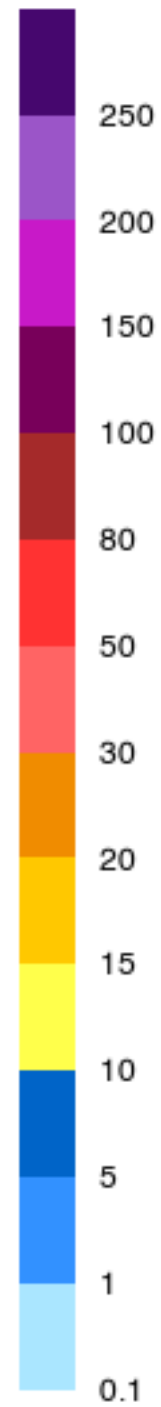
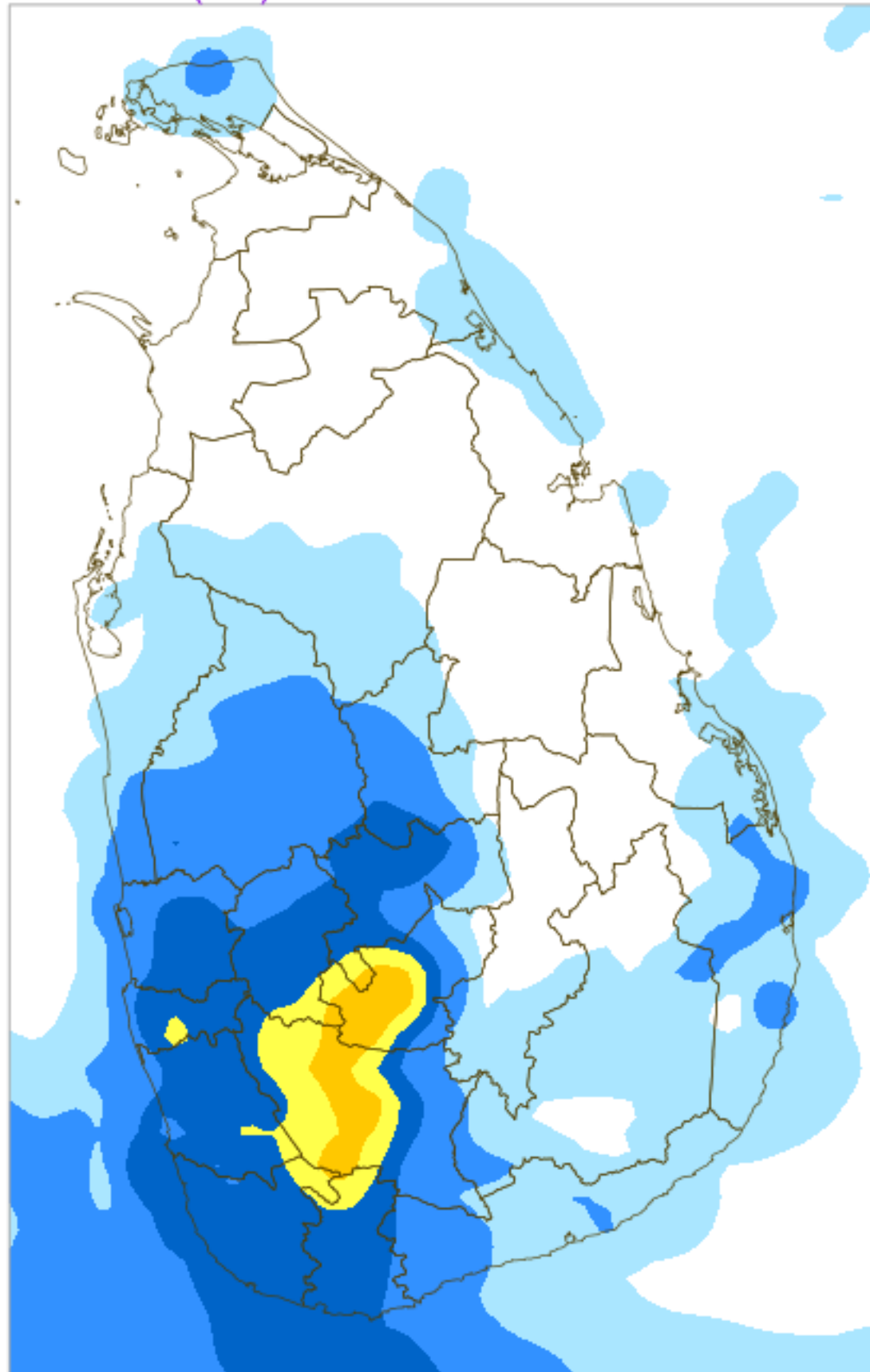
# 24H RAINFALL (mm) & MAXIMUM 2m TEMPERATURE (°C) FORECAST (24h)

For 24 hours ending at 8.30AM 02 AUG 2023

( Based on ECMWF (op1) model initialized at 00UTC 30 JUL 2023 )

Rainfall (mm)

Max 2m Temp. (°C)



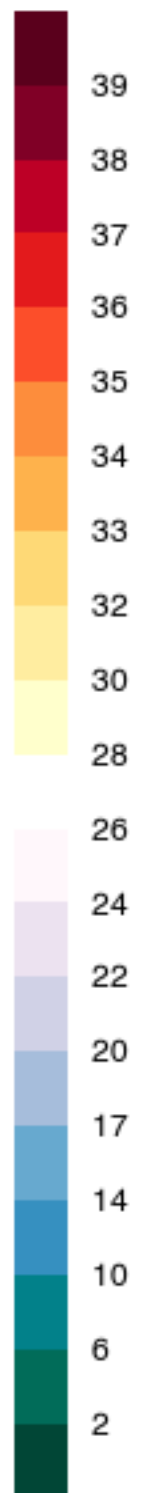
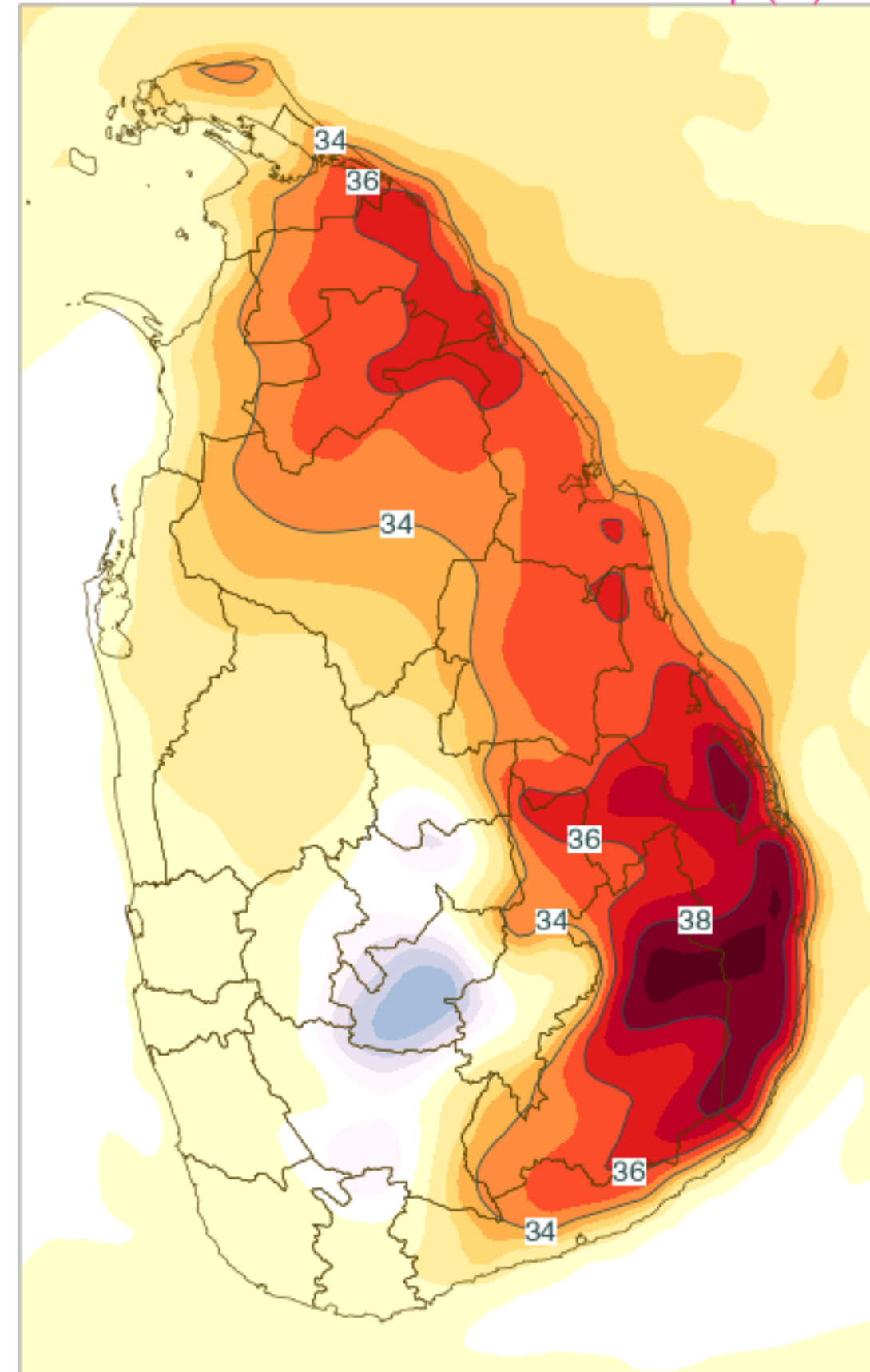
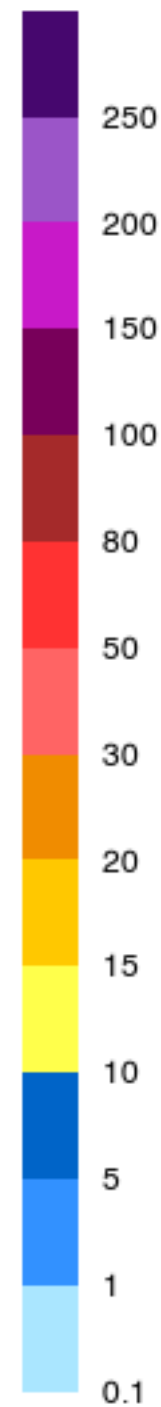
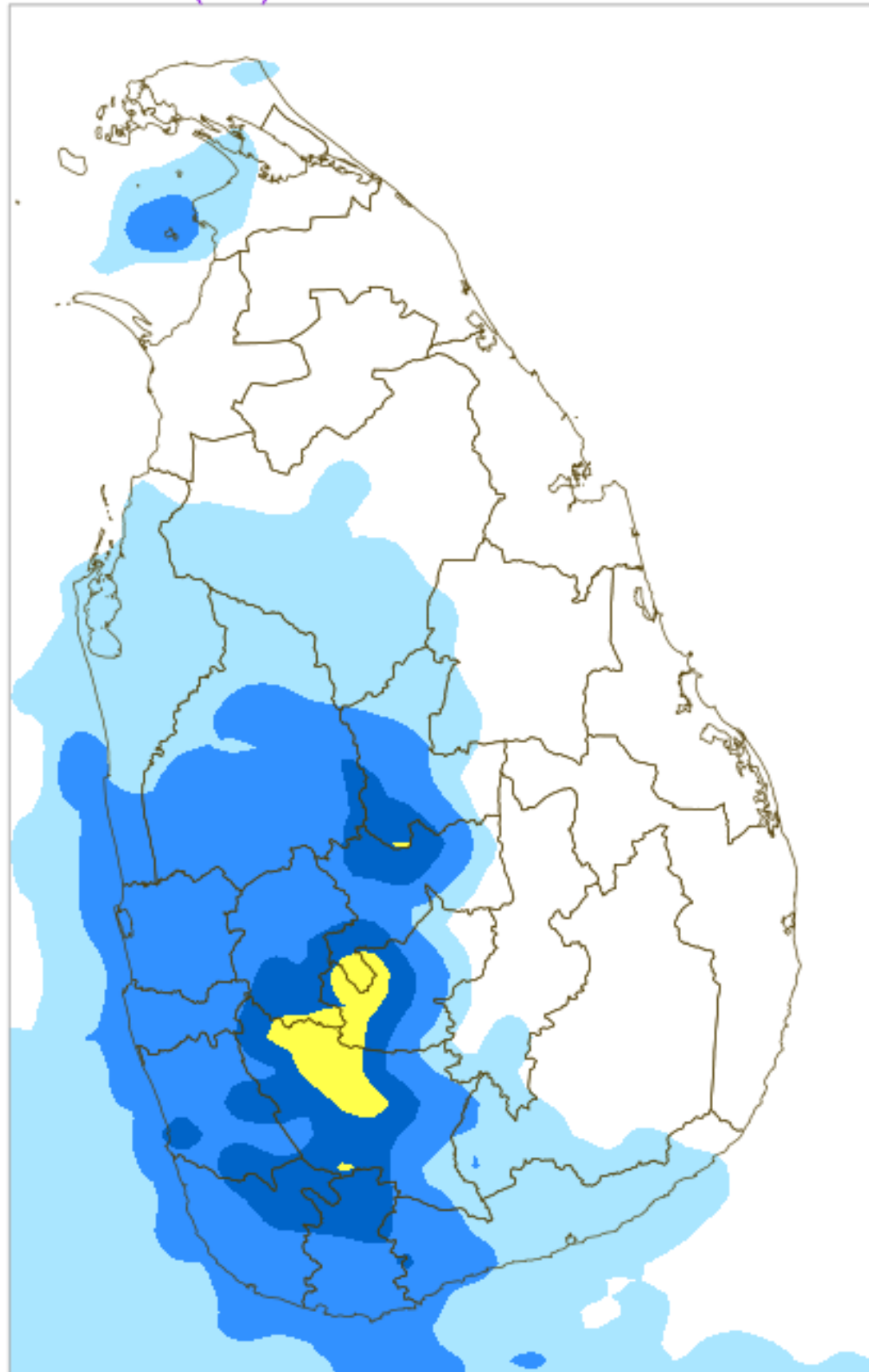
# 24H RAINFALL (mm) & MAXIMUM 2m TEMPERATURE (°C) FORECAST (24h)

For 24 hours ending at 8.30AM 03 AUG 2023

( Based on ECMWF (op1) model initialized at 00UTC 30 JUL 2023 )

Max 2m Temp. (°C)

Rainfall (mm)



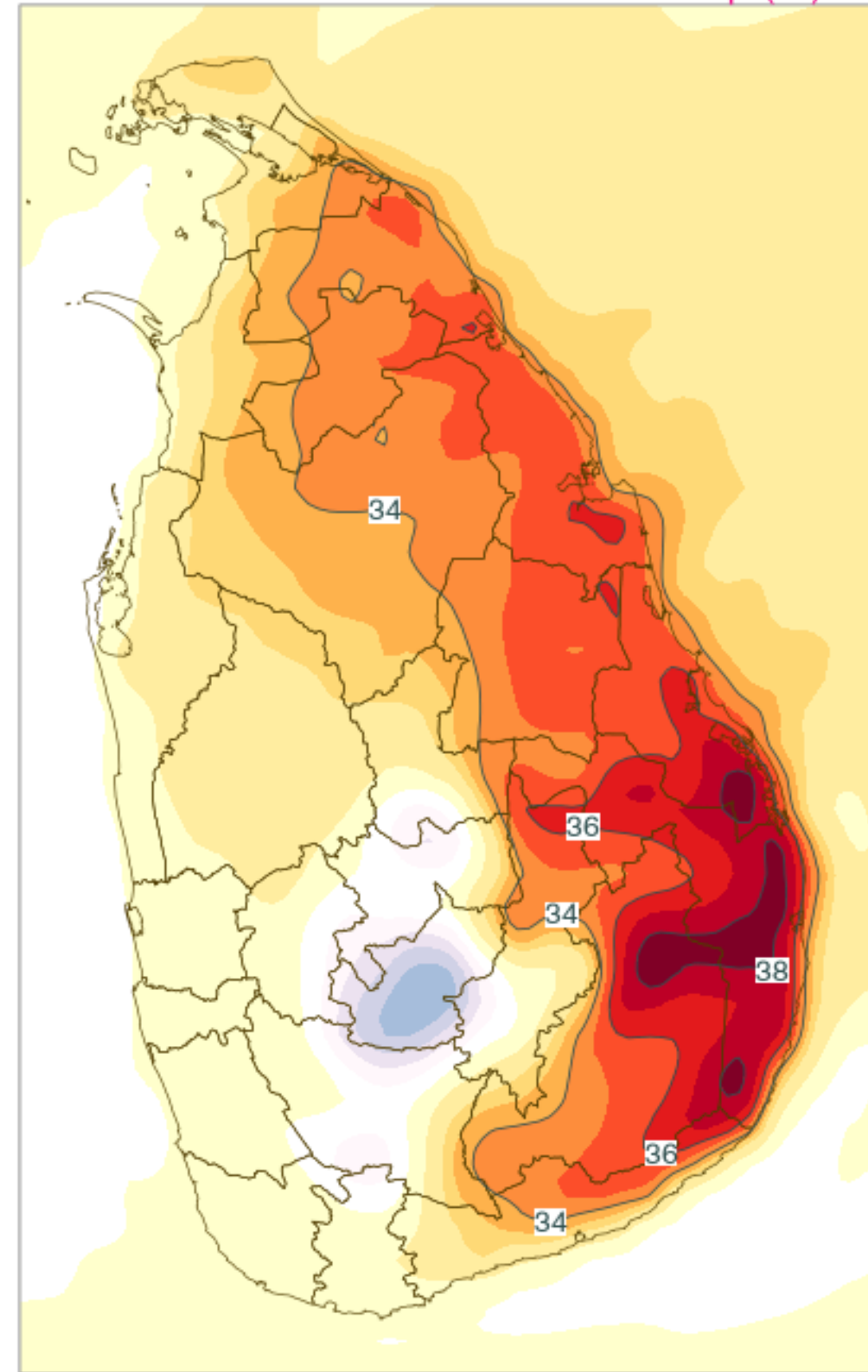
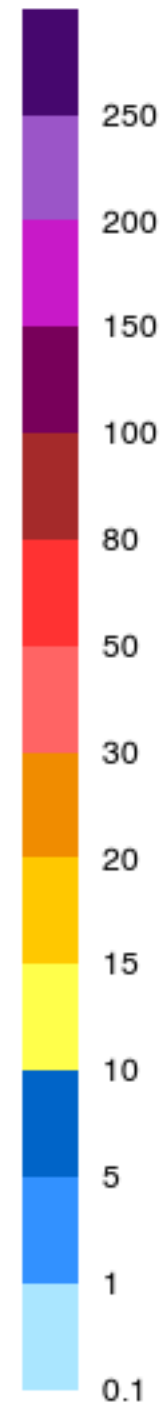
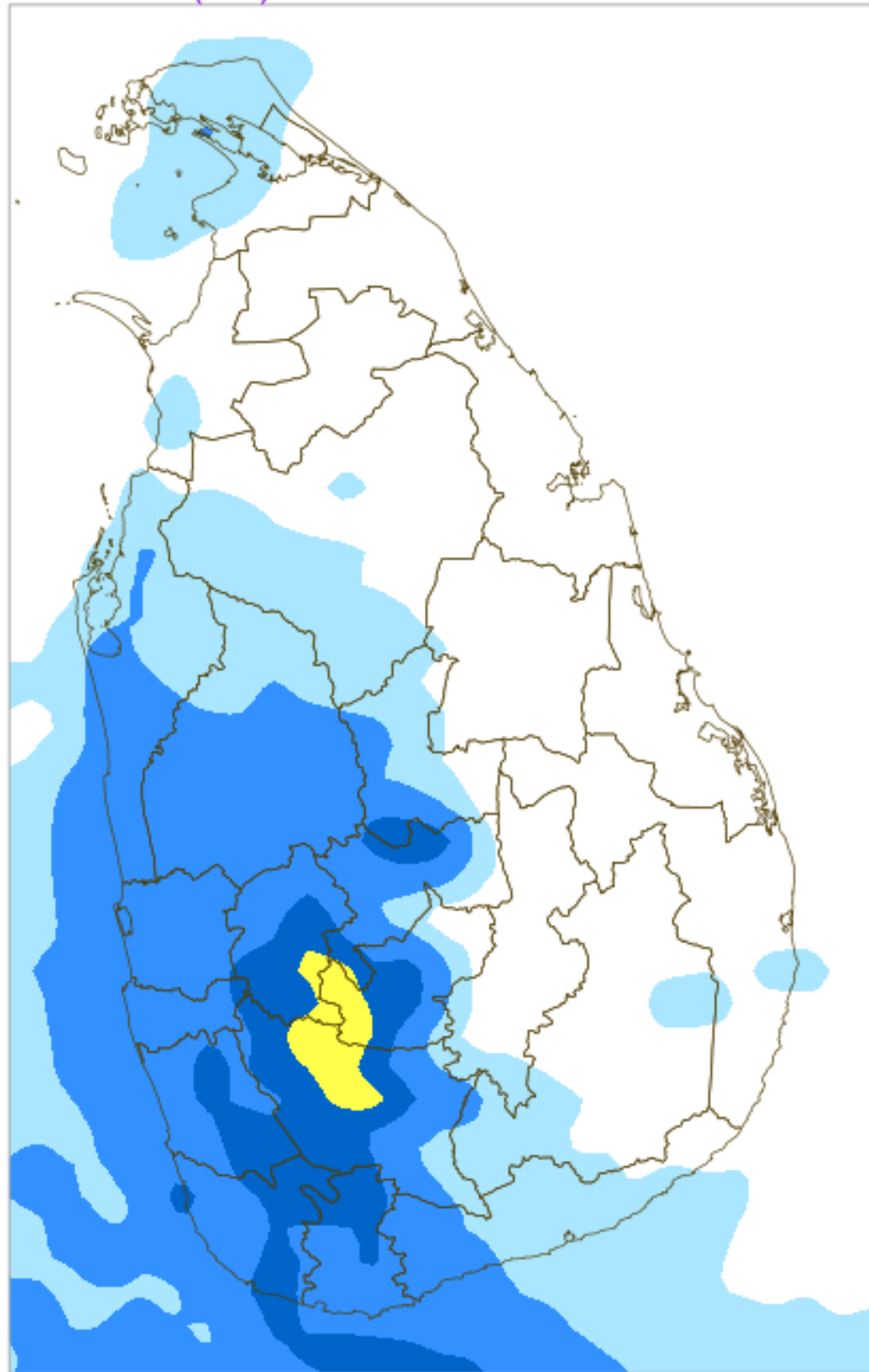
# 24H RAINFALL (mm) & MAXIMUM 2m TEMPERATURE (°C) FORECAST (24h)

For 24 hours ending at 8.30AM 04 AUG 2023

( Based on ECMWF (op1) model initialized at 00UTC 30 JUL 2023 )

Max 2m Temp. (°C)

Rainfall (mm)



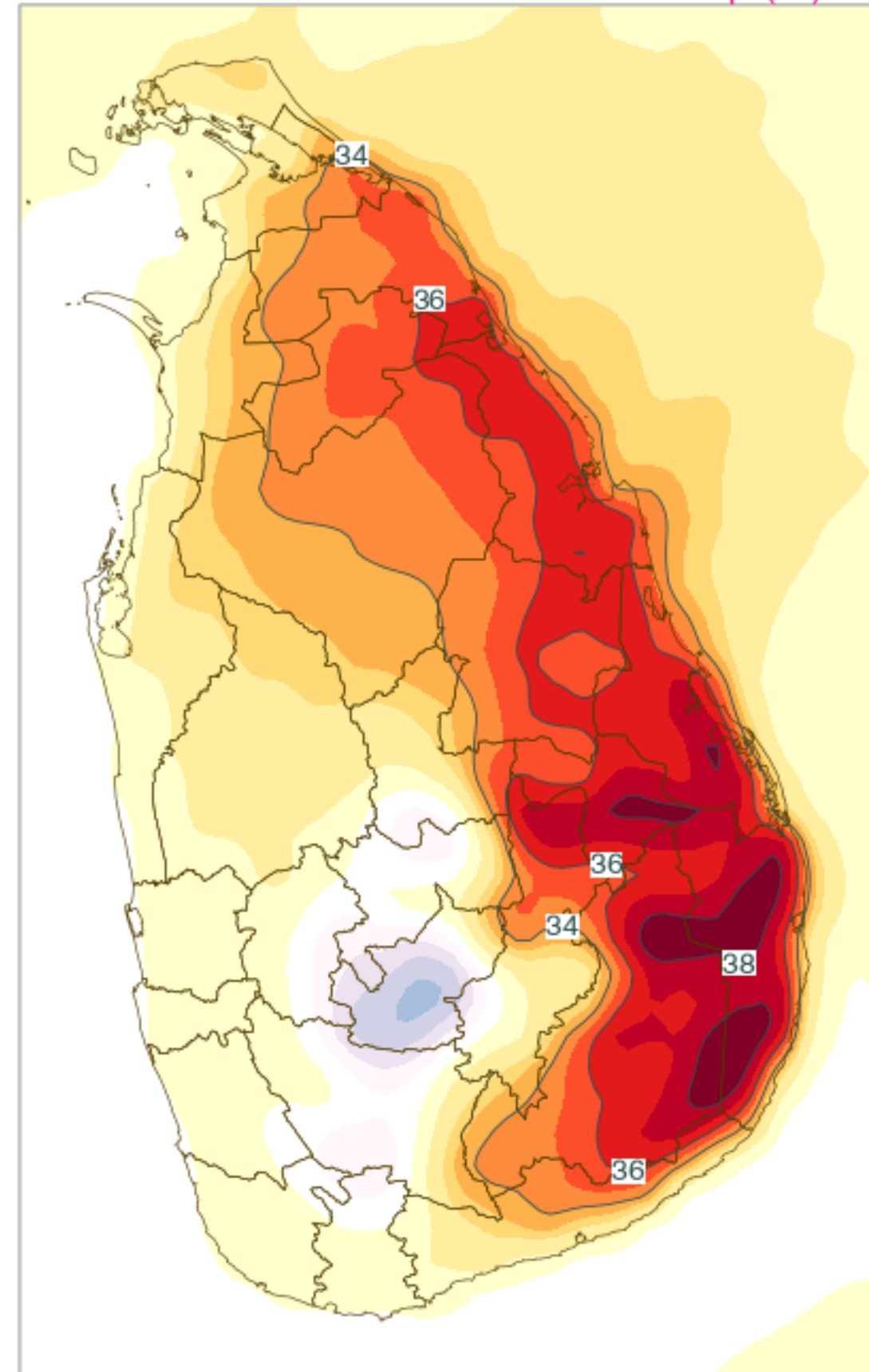
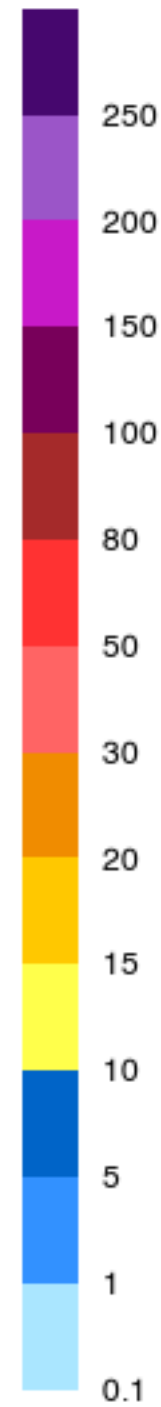
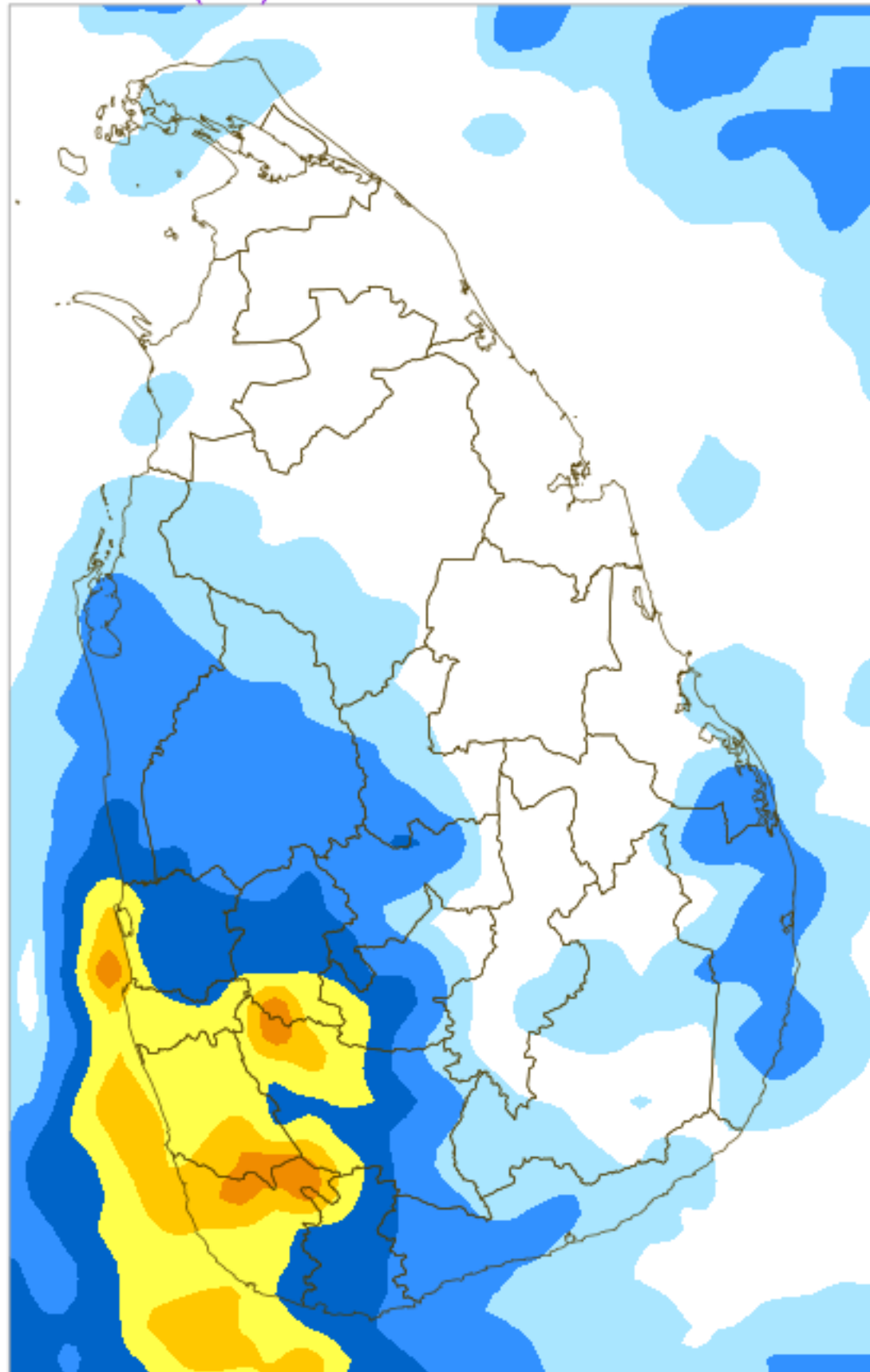
# 24H RAINFALL (mm) & MAXIMUM 2m TEMPERATURE (°C) FORECAST (24h)

For 24 hours ending at 8.30AM 05 AUG 2023

( Based on ECMWF (op1) model initialized at 00UTC 30 JUL 2023 )

Rainfall (mm)

Max 2m Temp. (°C)



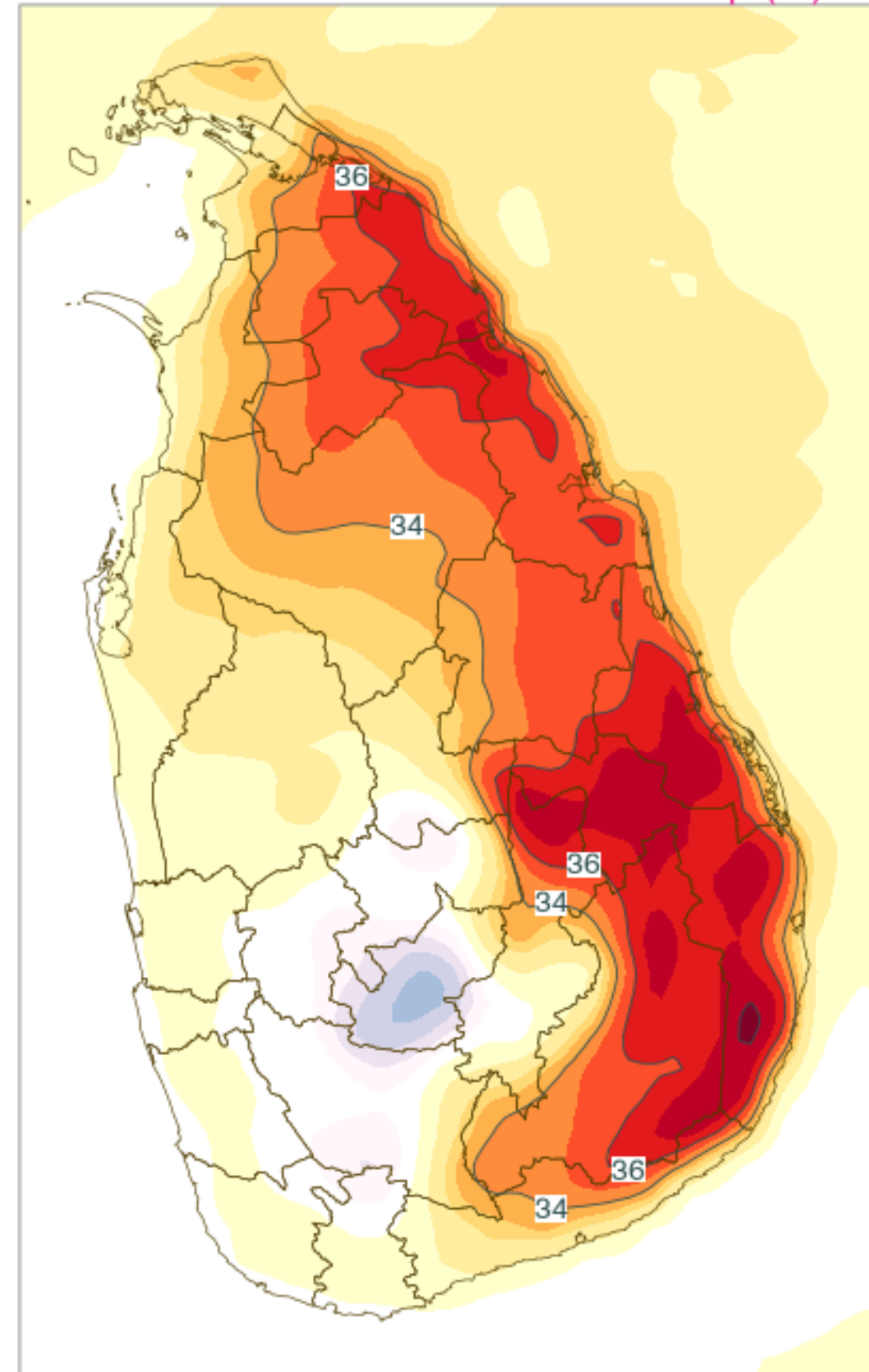
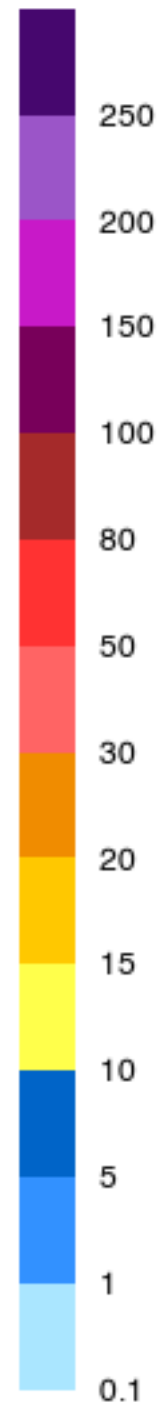
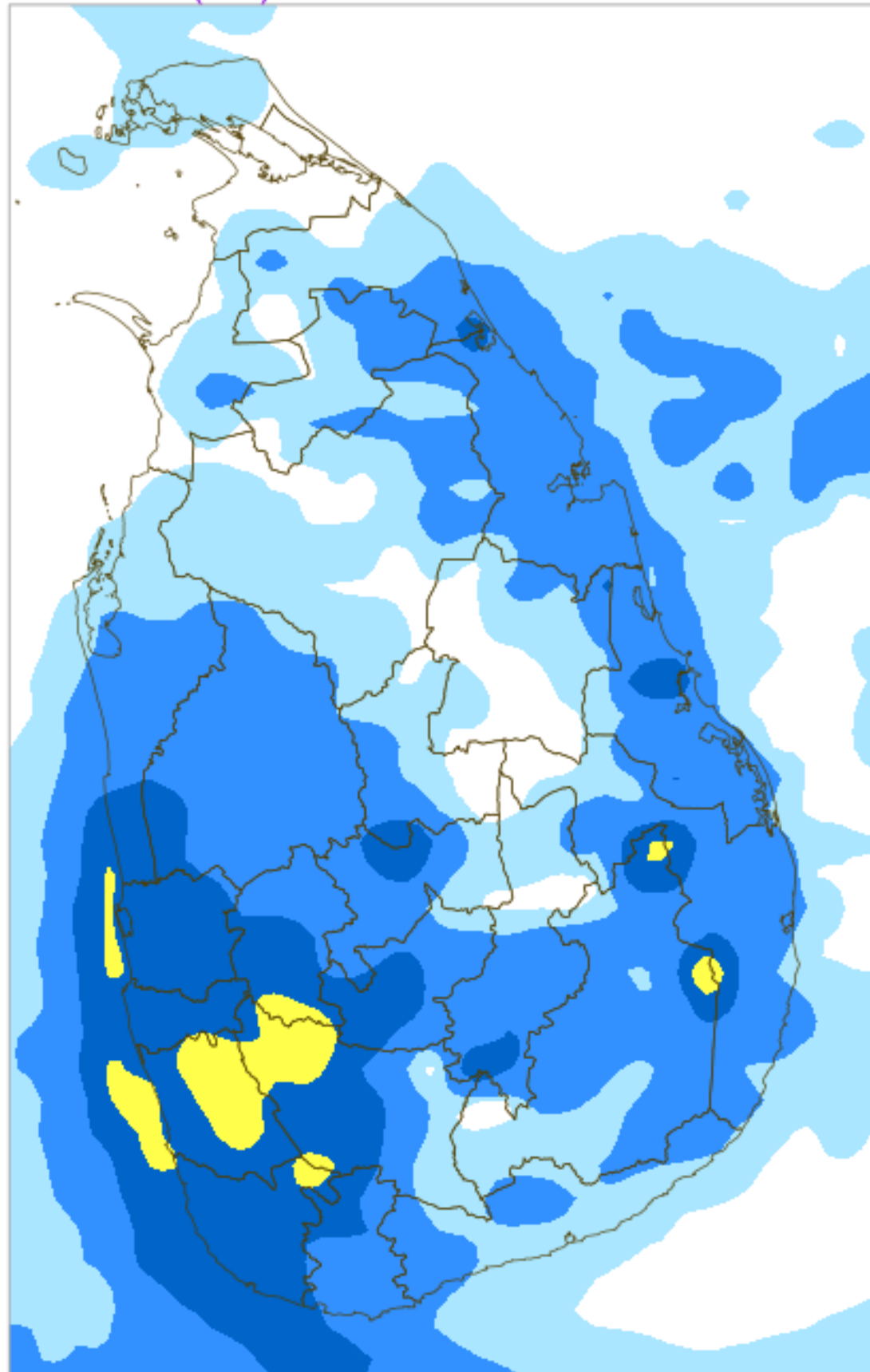
# 24H RAINFALL (mm) & MAXIMUM 2m TEMPERATURE (°C) FORECAST (24h)

For 24 hours ending at 8.30AM 06 AUG 2023

( Based on ECMWF (op1) model initialized at 00UTC 30 JUL 2023 )

Rainfall (mm)

Max 2m Temp. (°C)



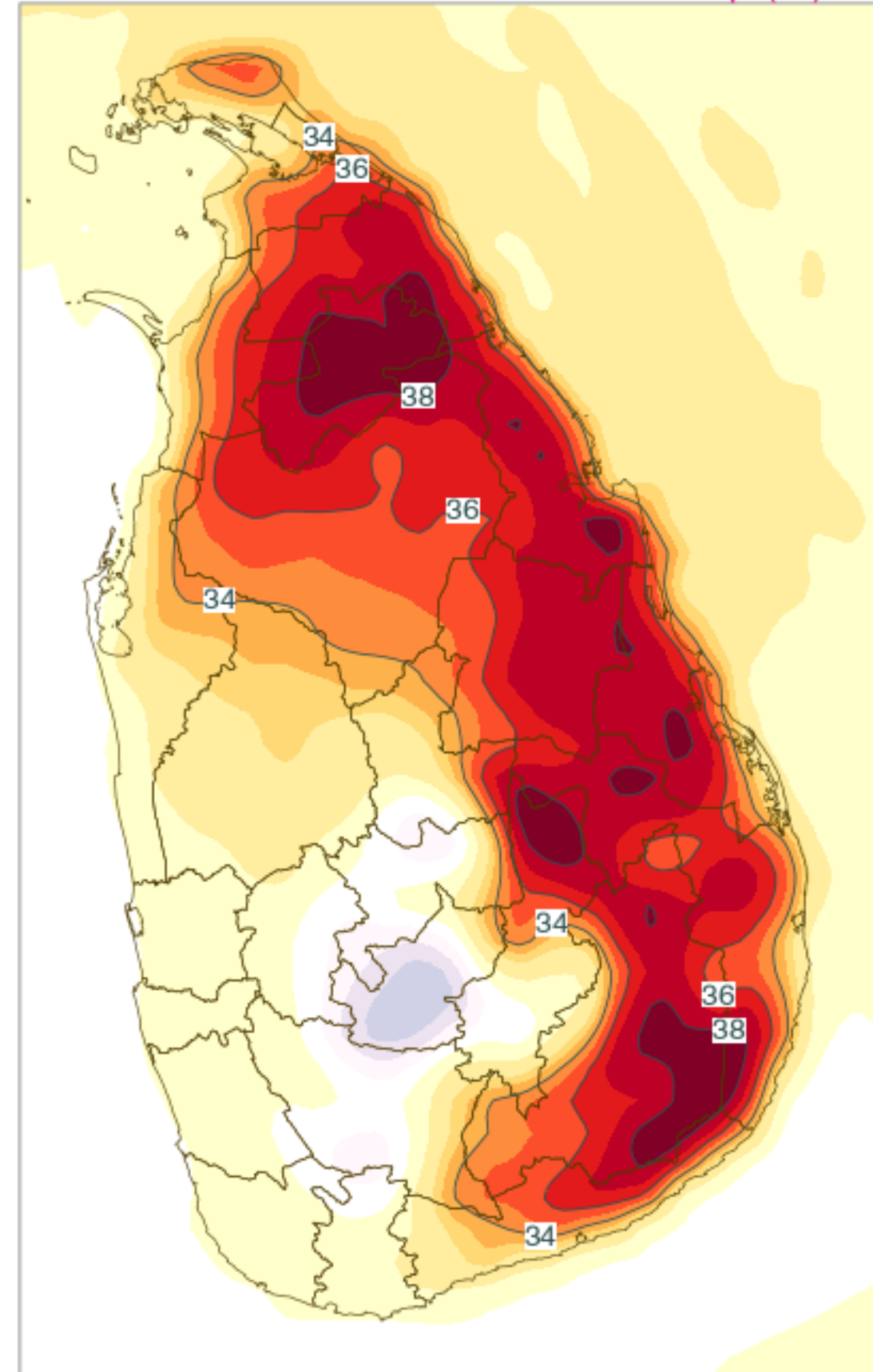
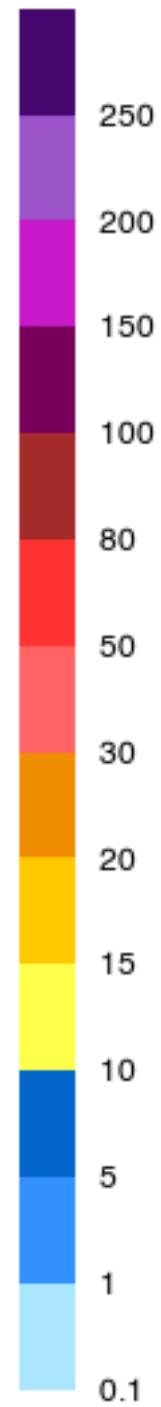
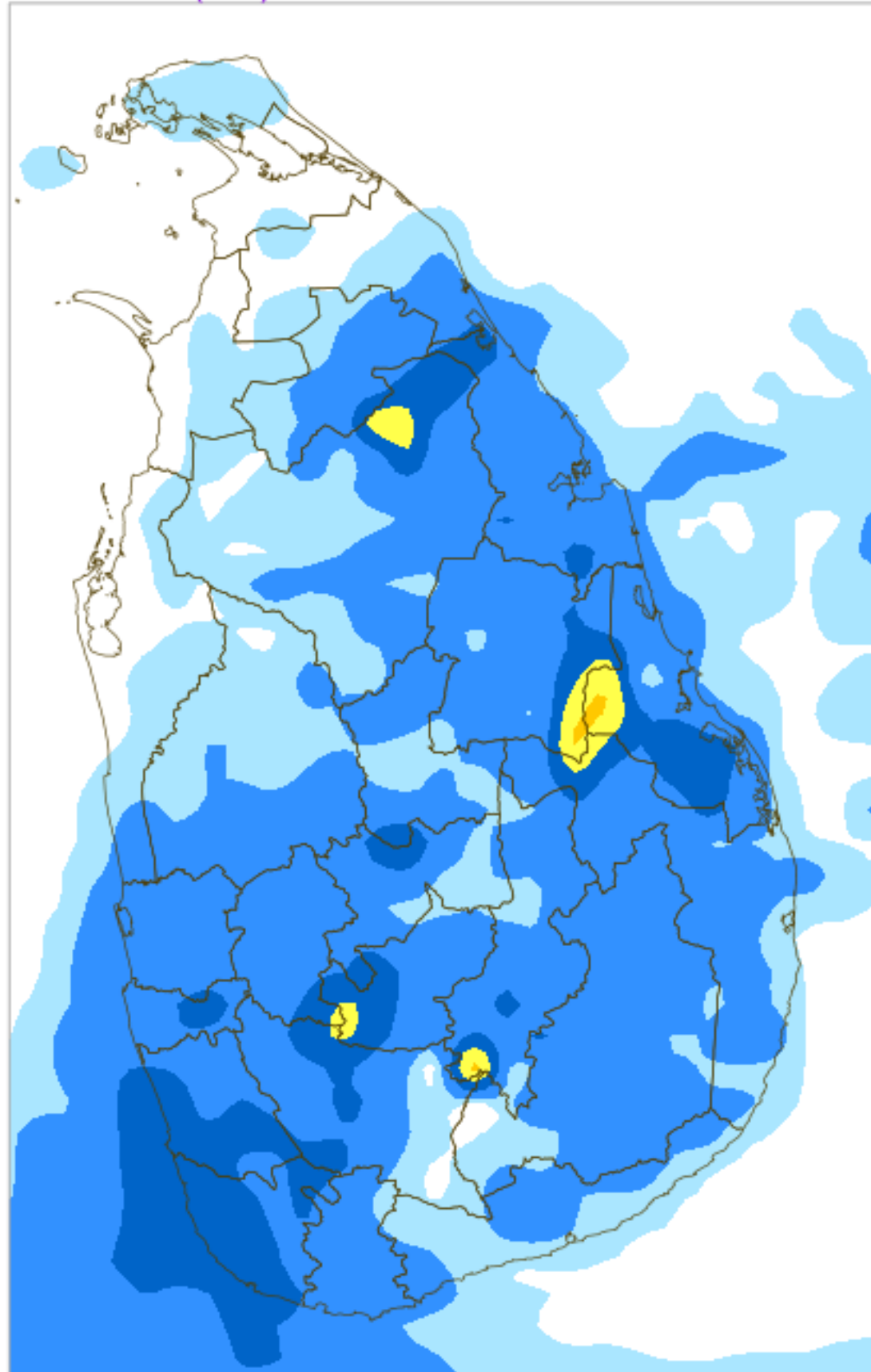
# 24H RAINFALL (mm) & MAXIMUM 2m TEMPERATURE (°C) FORECAST (24h)

For 24 hours ending at 8.30AM 07 AUG 2023

( Based on ECMWF (op1) model initialized at 00UTC 30 JUL 2023 )

Rainfall (mm)

Max 2m Temp. (°C)





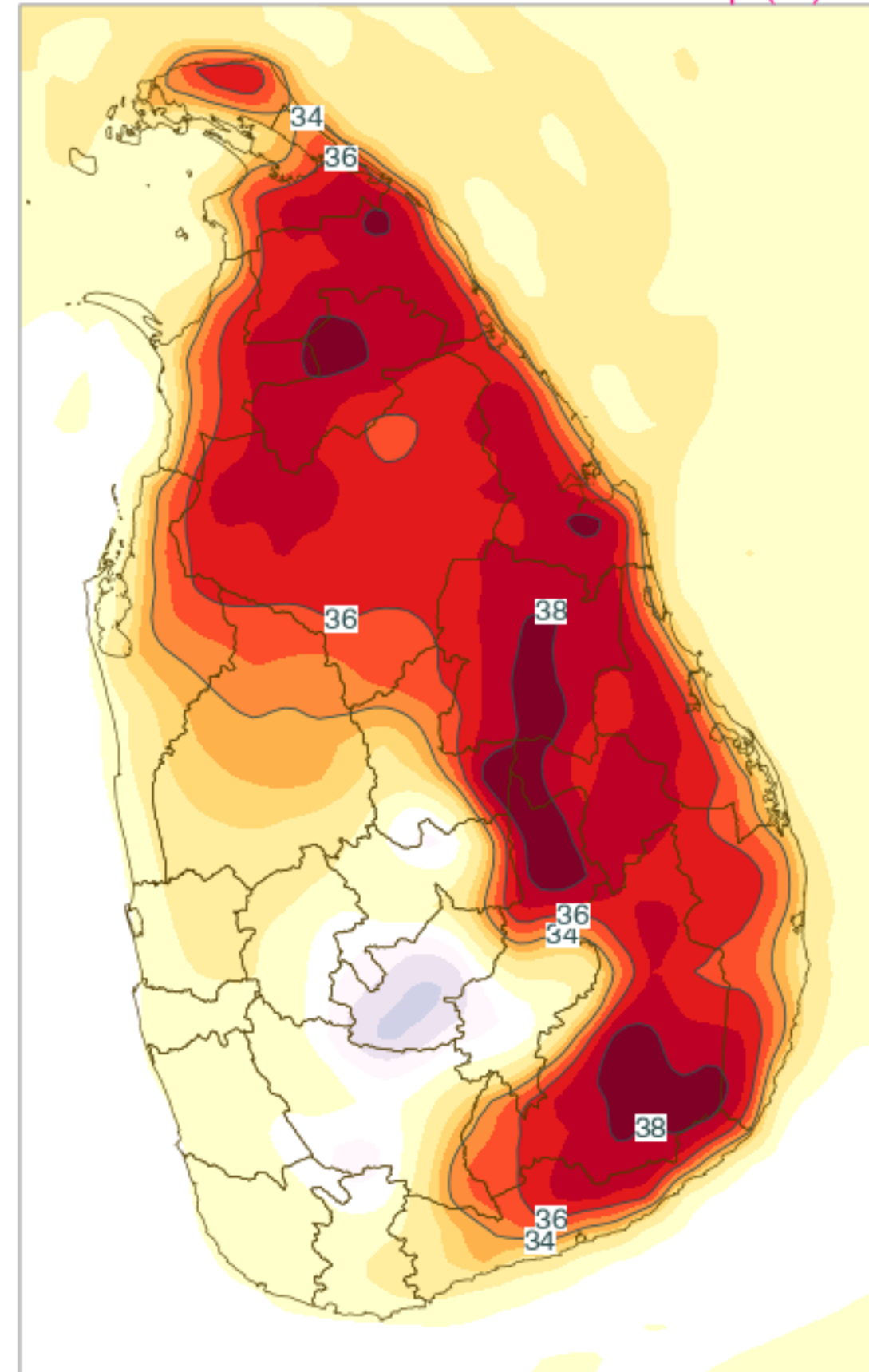
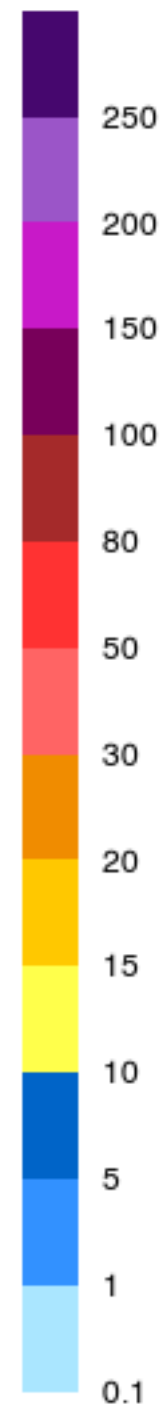
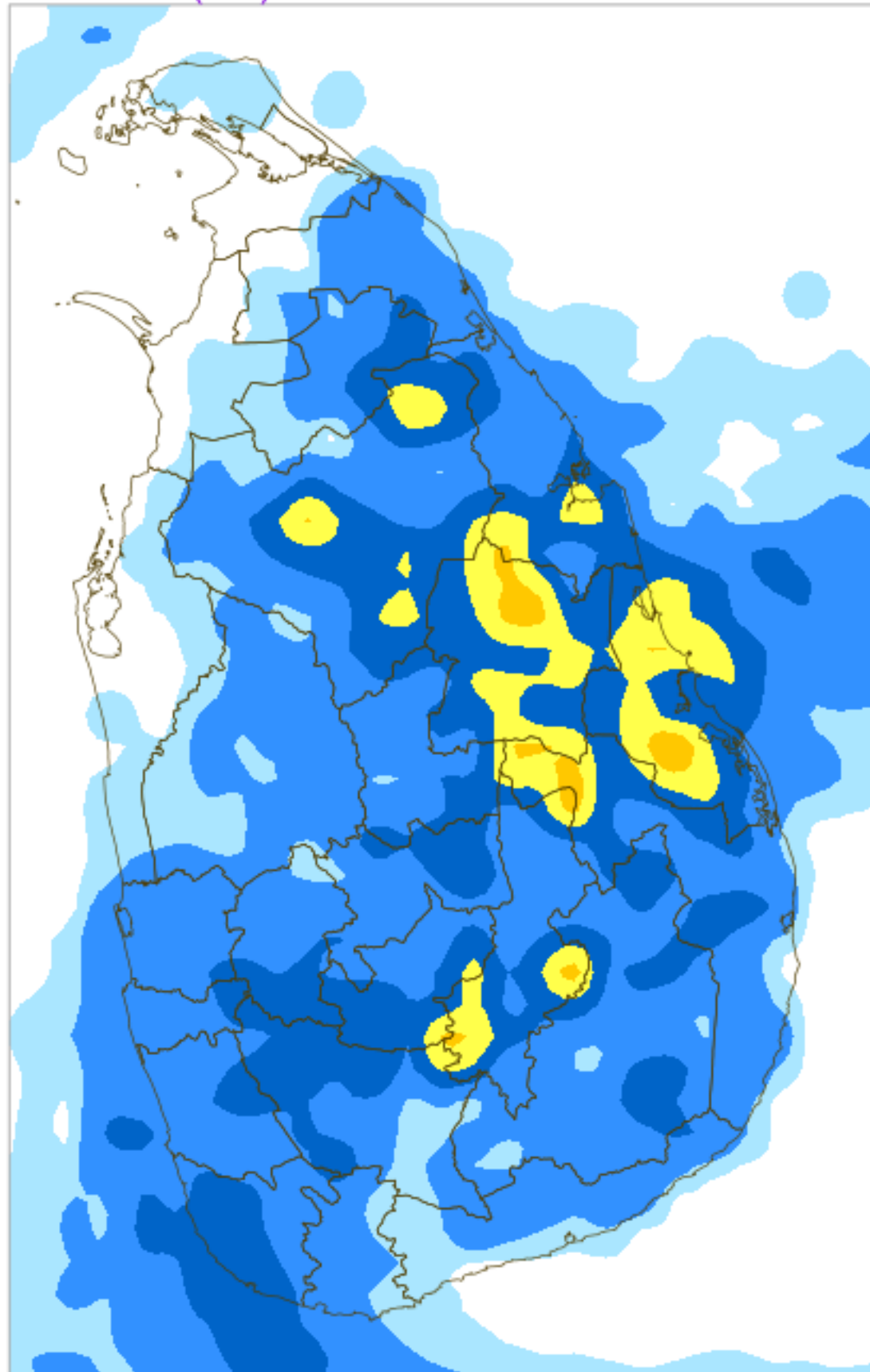
# 24H RAINFALL (mm) & MAXIMUM 2m TEMPERATURE (°C) FORECAST (24h)

For 24 hours ending at 8.30AM 08 AUG 2023

( Based on ECMWF (op1) model initialized at 00UTC 30 JUL 2023 )

Max 2m Temp. (°C)

Rainfall (mm)



# 24H RAINFALL (mm) & MAXIMUM 2m TEMPERATURE (°C) FORECAST (24h)

For 24 hours ending at 8.30AM 09 AUG 2023

( Based on ECMWF (op1) model initialized at 00UTC 30 JUL 2023 )

Rainfall (mm)

Max 2m Temp. (°C)

