

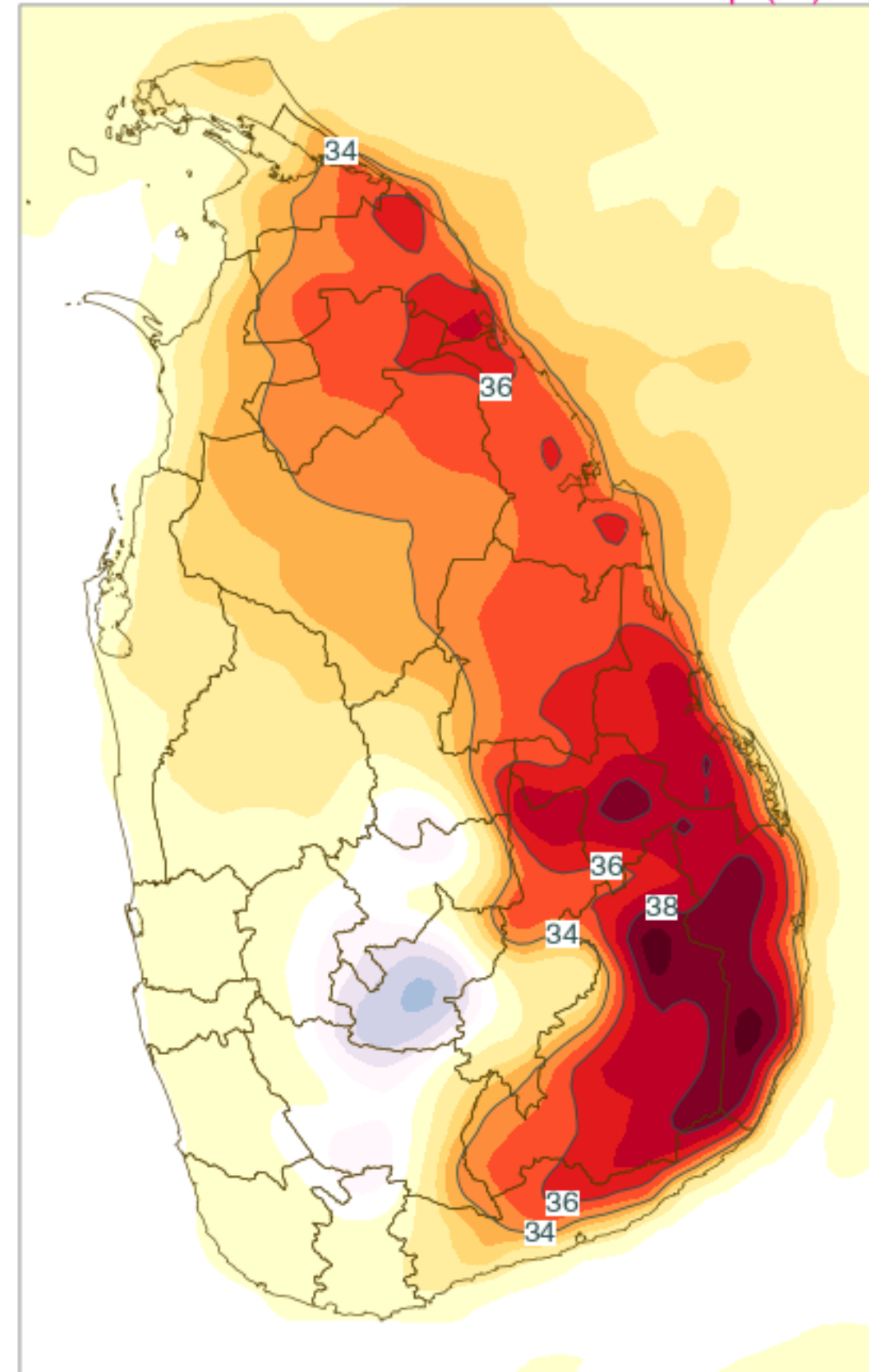
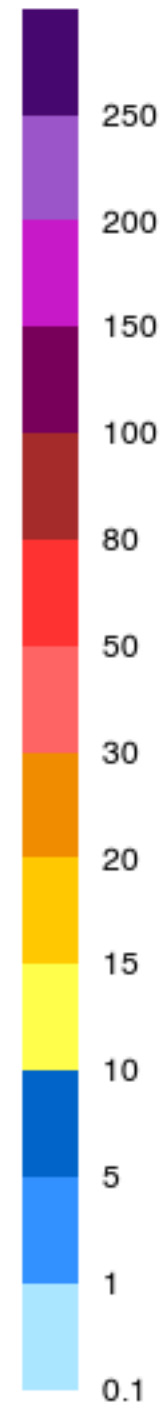
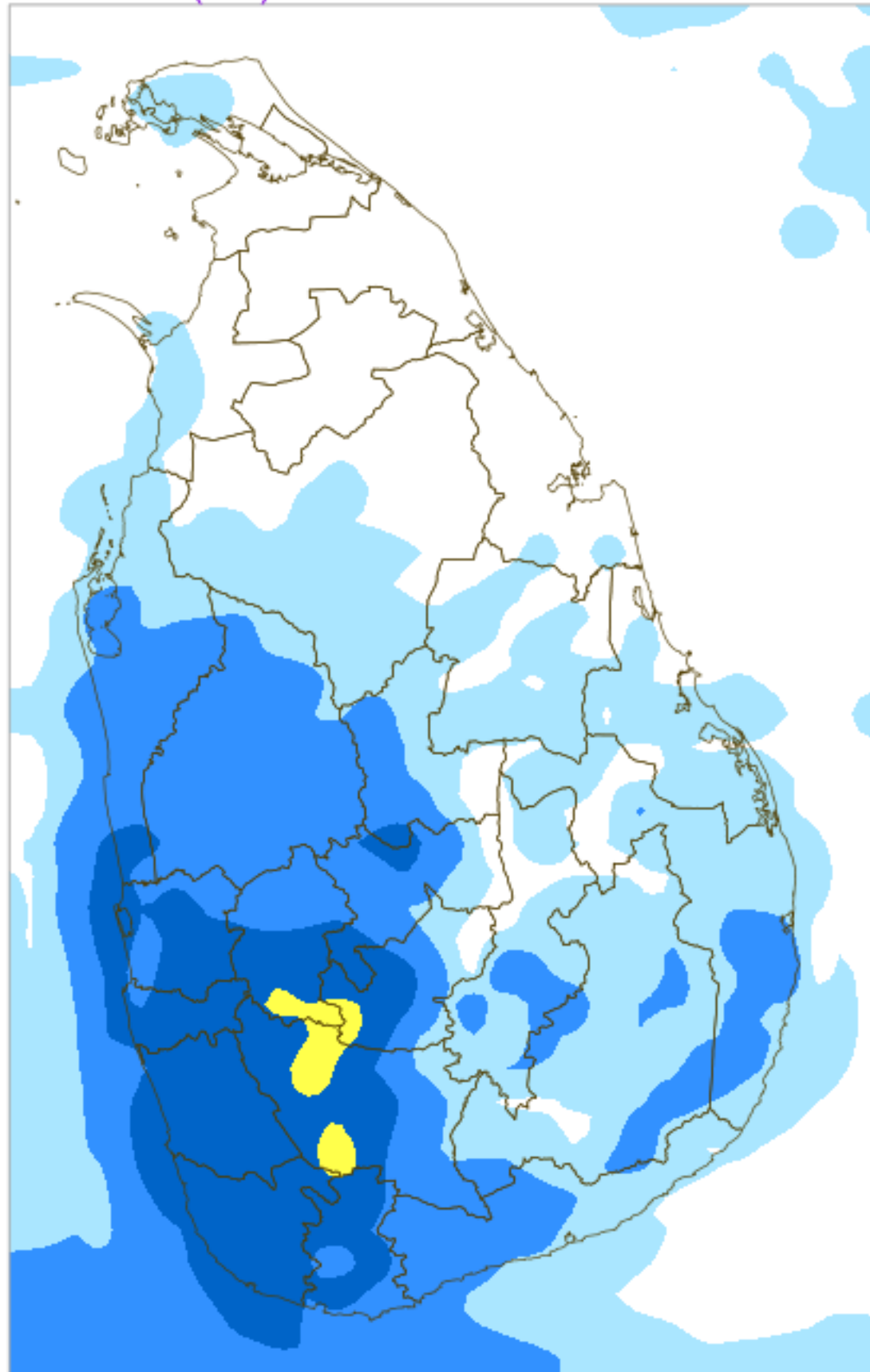
24H RAINFALL (mm) & MAXIMUM 2m TEMPERATURE (°C) FORECAST (24h)

For 24 hours ending at 8.30AM 04 AUG 2023

(Based on ECMWF (op1) model initialized at 12UTC 02 AUG 2023)

Rainfall (mm)

Max 2m Temp. (°C)



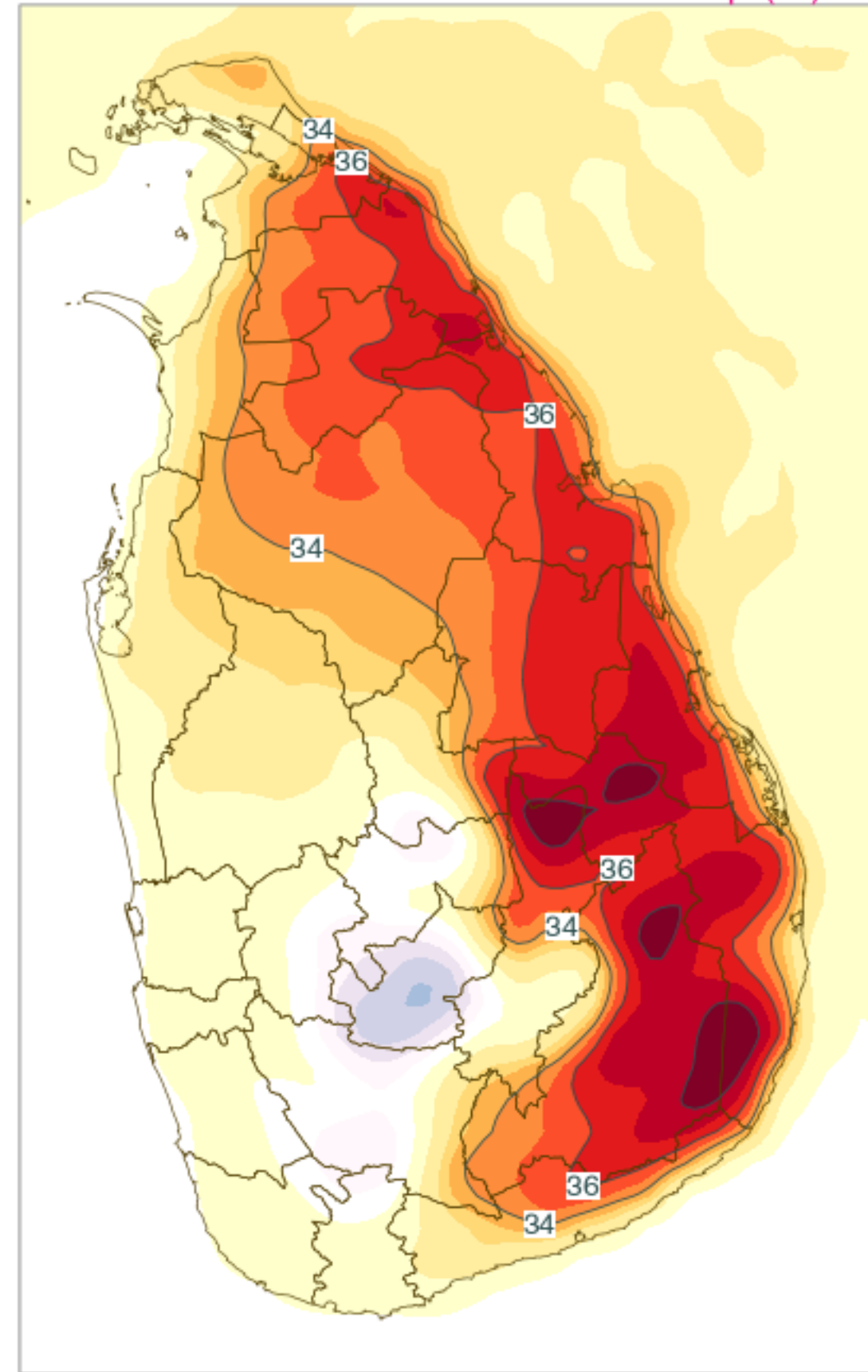
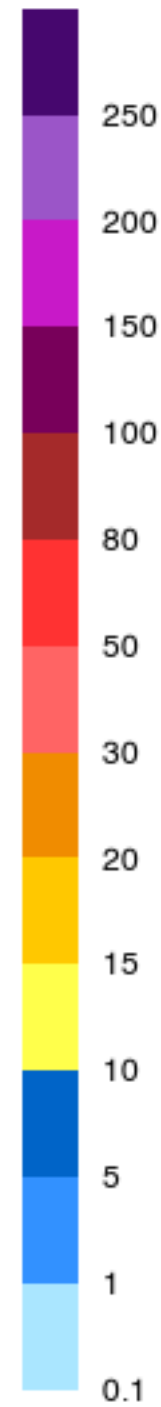
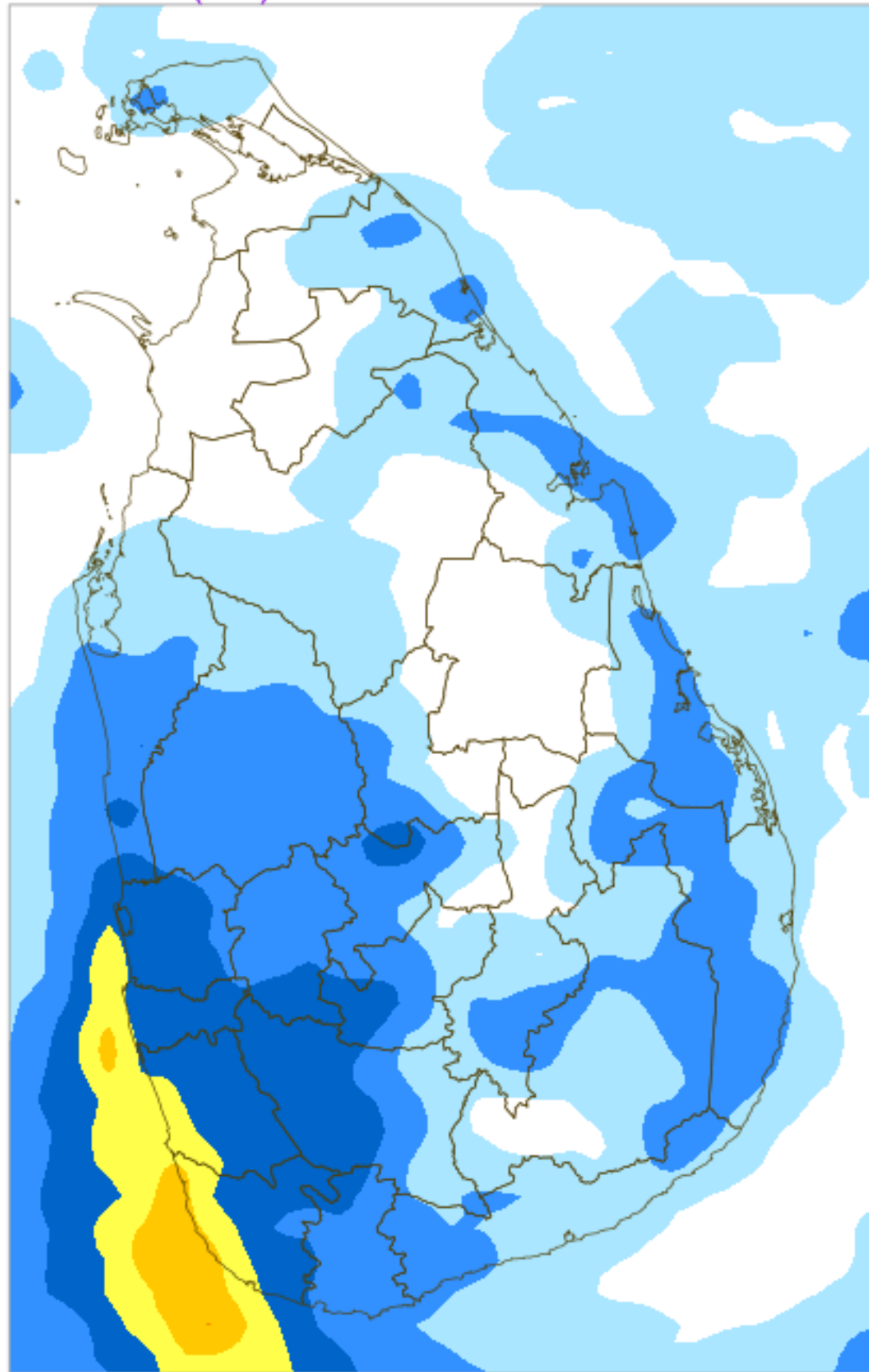
24H RAINFALL (mm) & MAXIMUM 2m TEMPERATURE (°C) FORECAST (24h)

For 24 hours ending at 8.30AM 05 AUG 2023

(Based on ECMWF (op1) model initialized at 12UTC 02 AUG 2023)

Rainfall (mm)

Max 2m Temp. (°C)



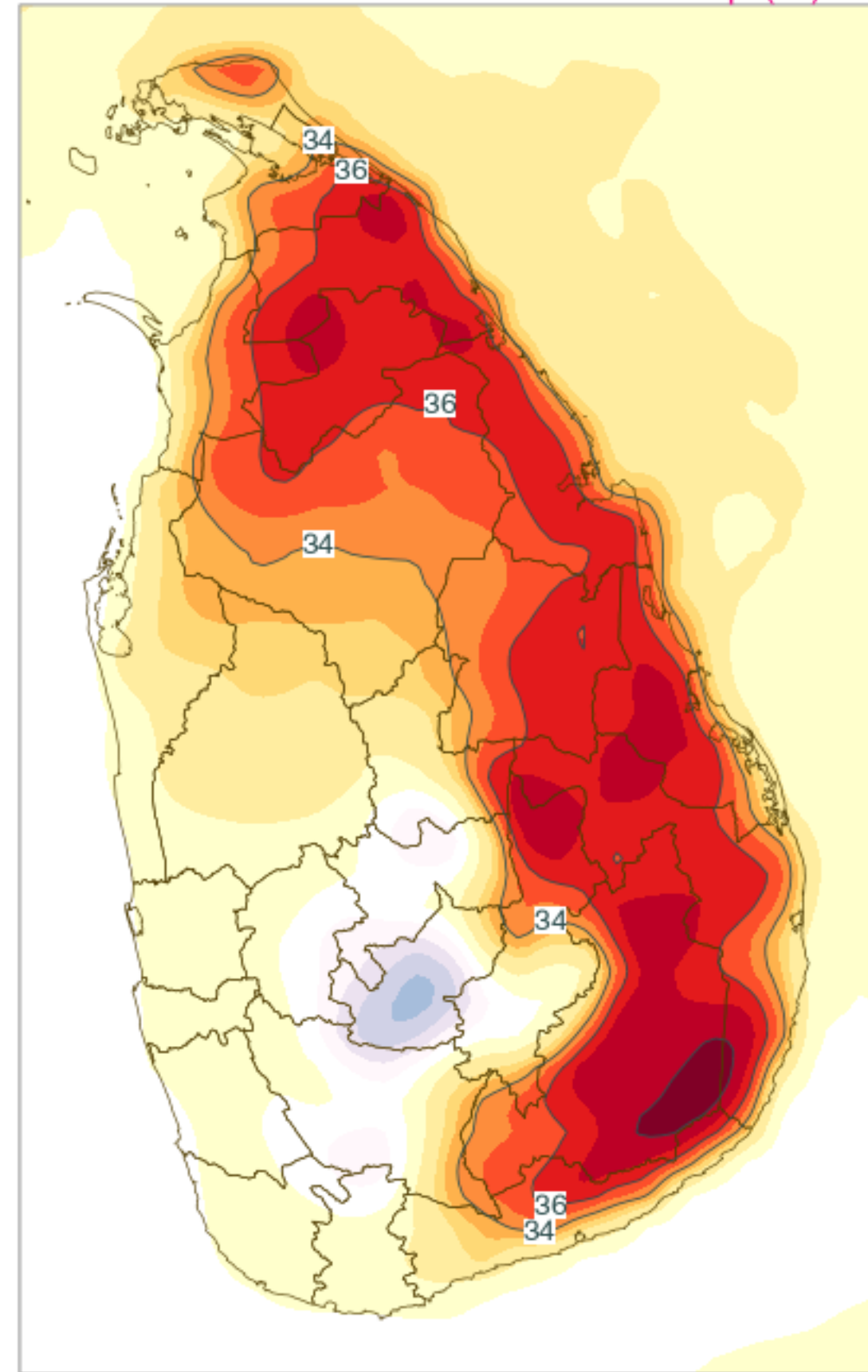
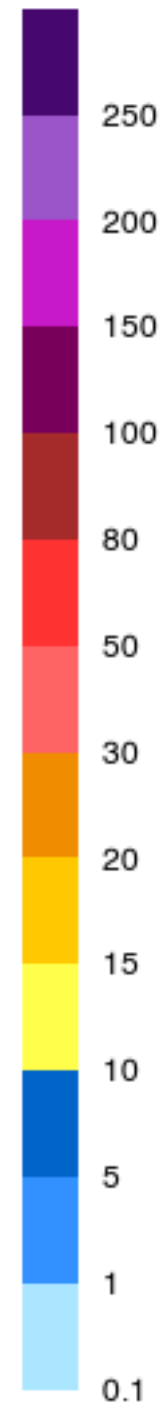
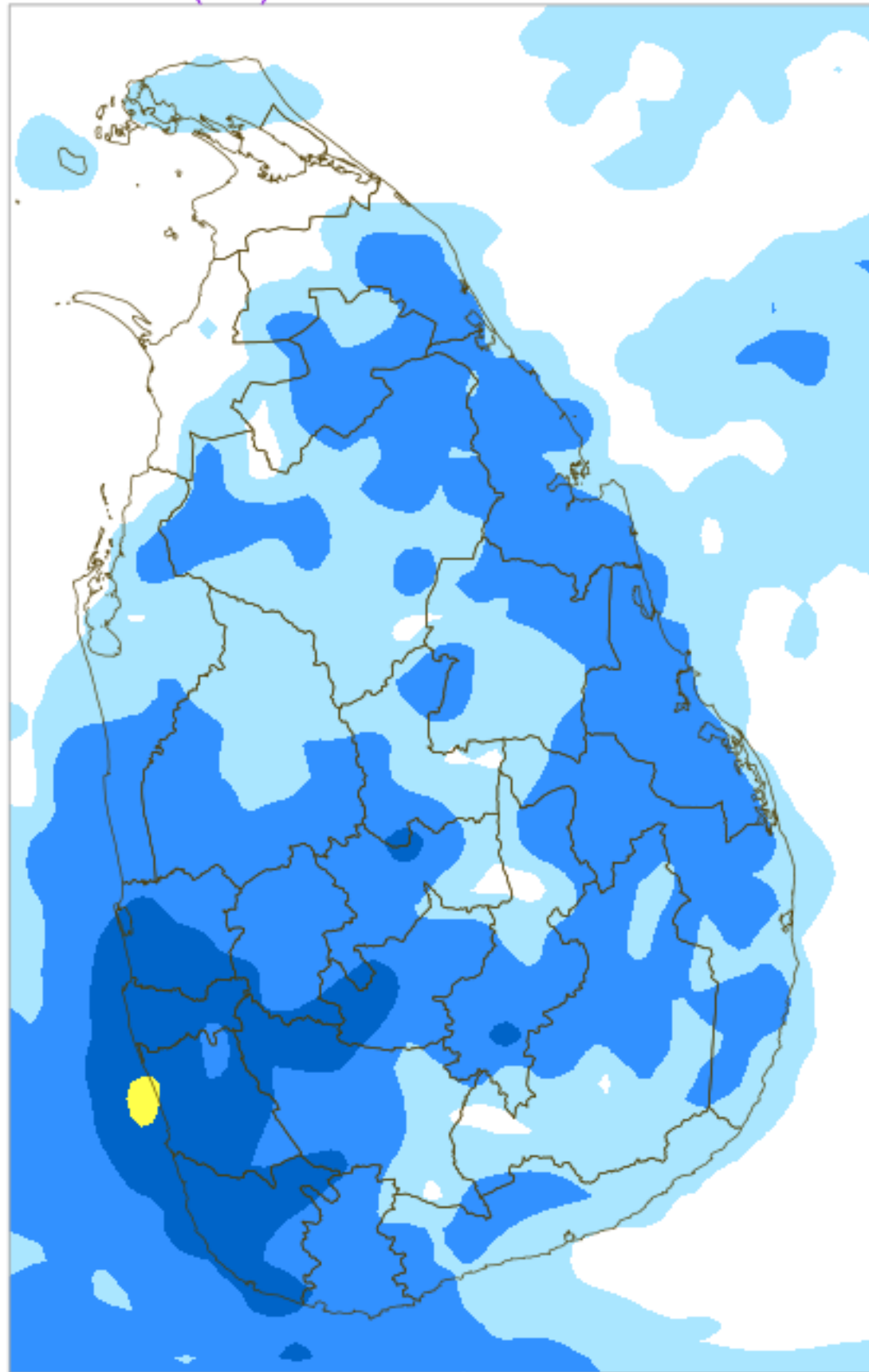
24H RAINFALL (mm) & MAXIMUM 2m TEMPERATURE (°C) FORECAST (24h)

For 24 hours ending at 8.30AM 06 AUG 2023

(Based on ECMWF (op1) model initialized at 12UTC 02 AUG 2023)

Rainfall (mm)

Max 2m Temp. (°C)



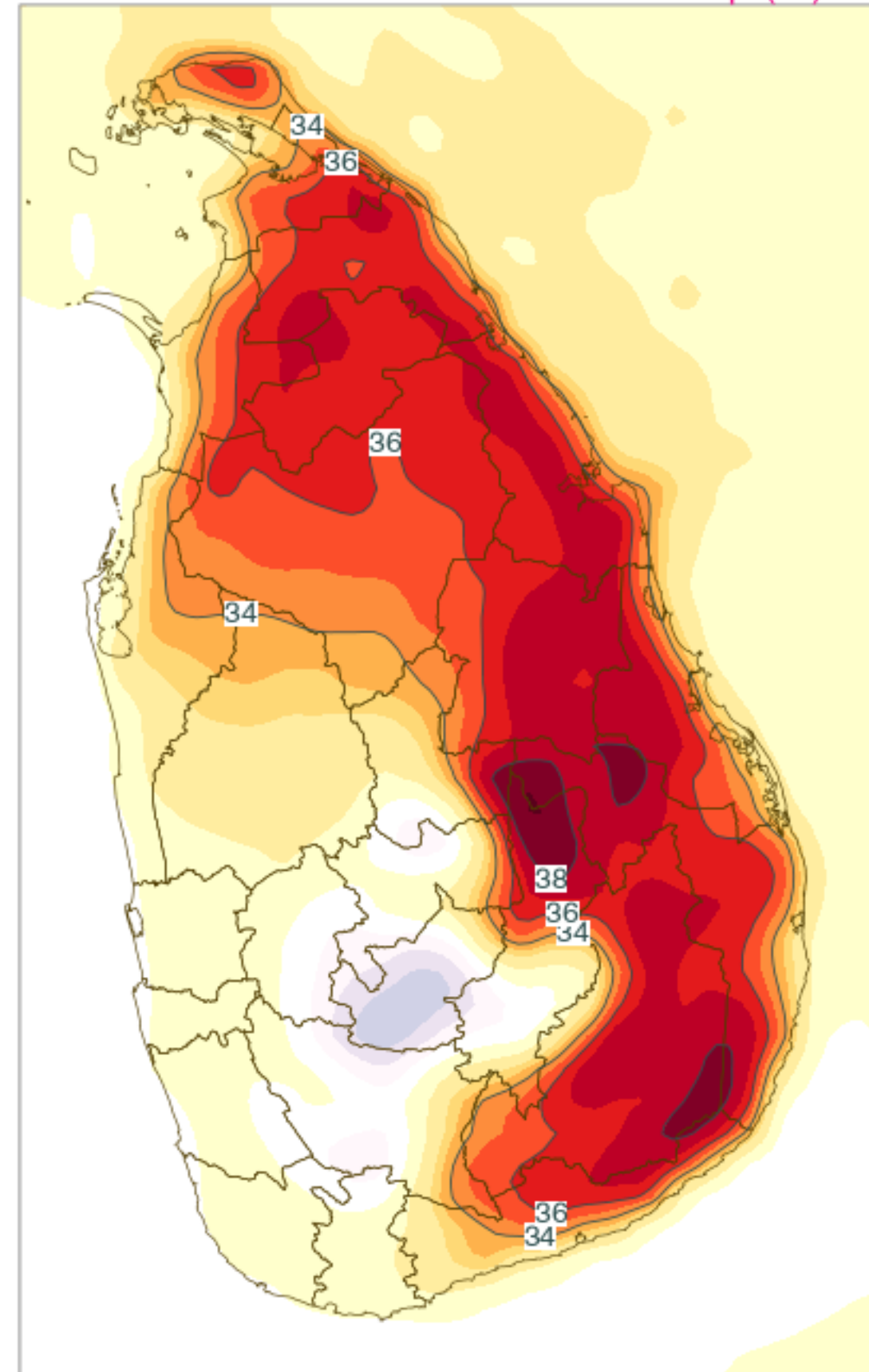
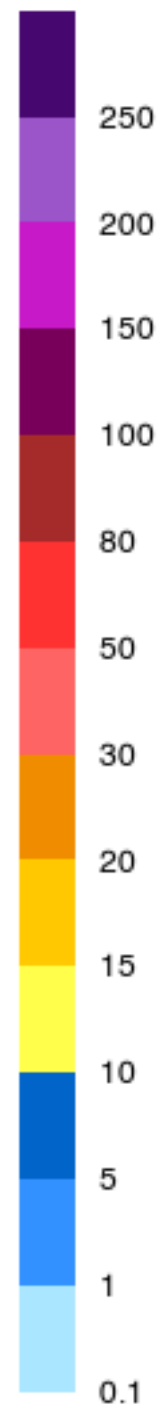
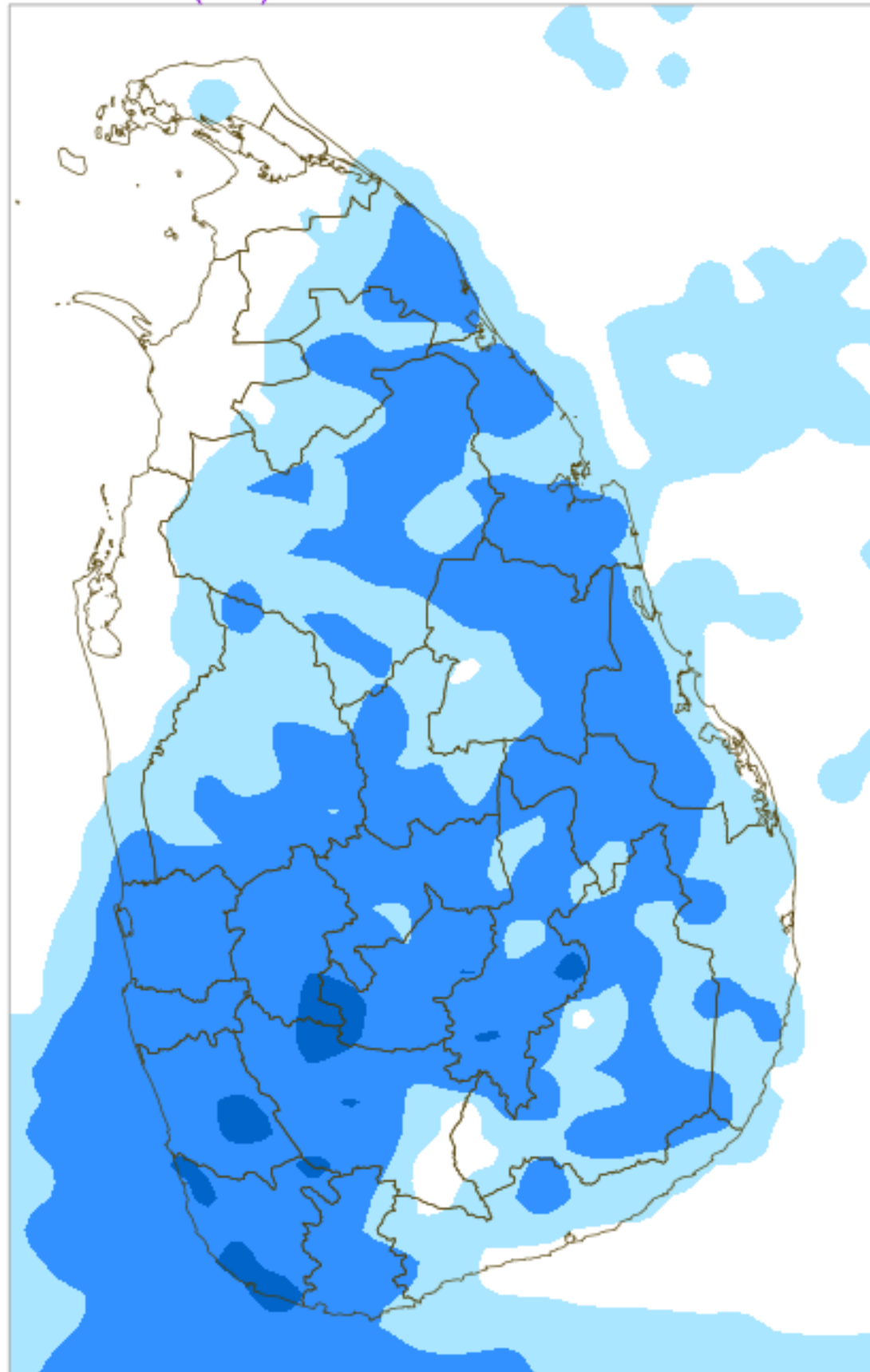
24H RAINFALL (mm) & MAXIMUM 2m TEMPERATURE (°C) FORECAST (24h)

For 24 hours ending at 8.30AM 07 AUG 2023

(Based on ECMWF (op1) model initialized at 12UTC 02 AUG 2023)

Rainfall (mm)

Max 2m Temp. (°C)



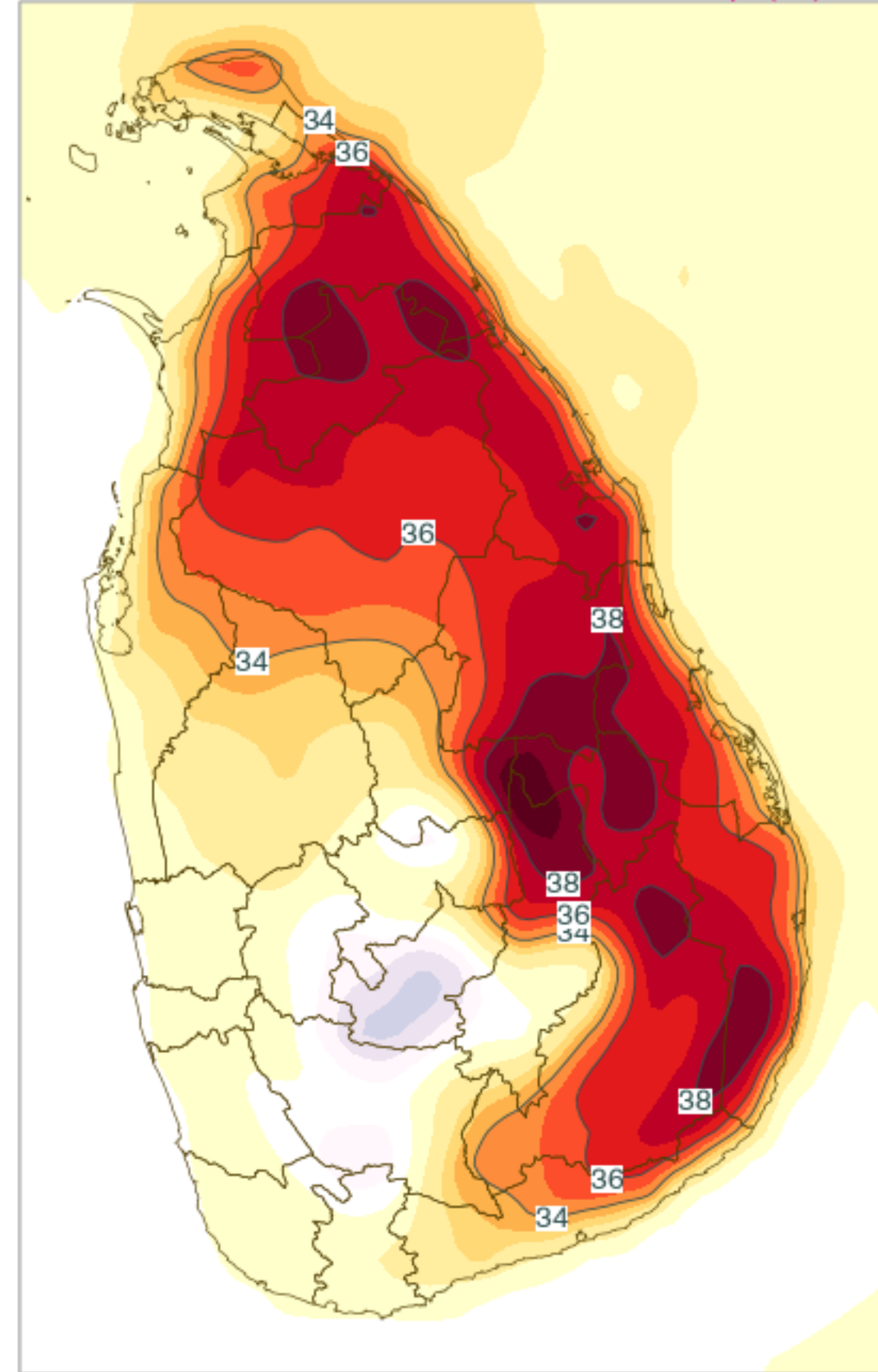
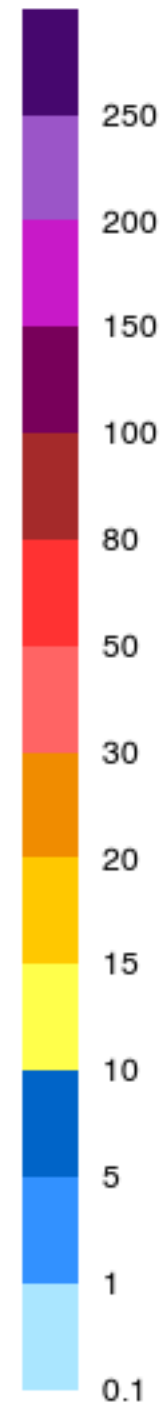
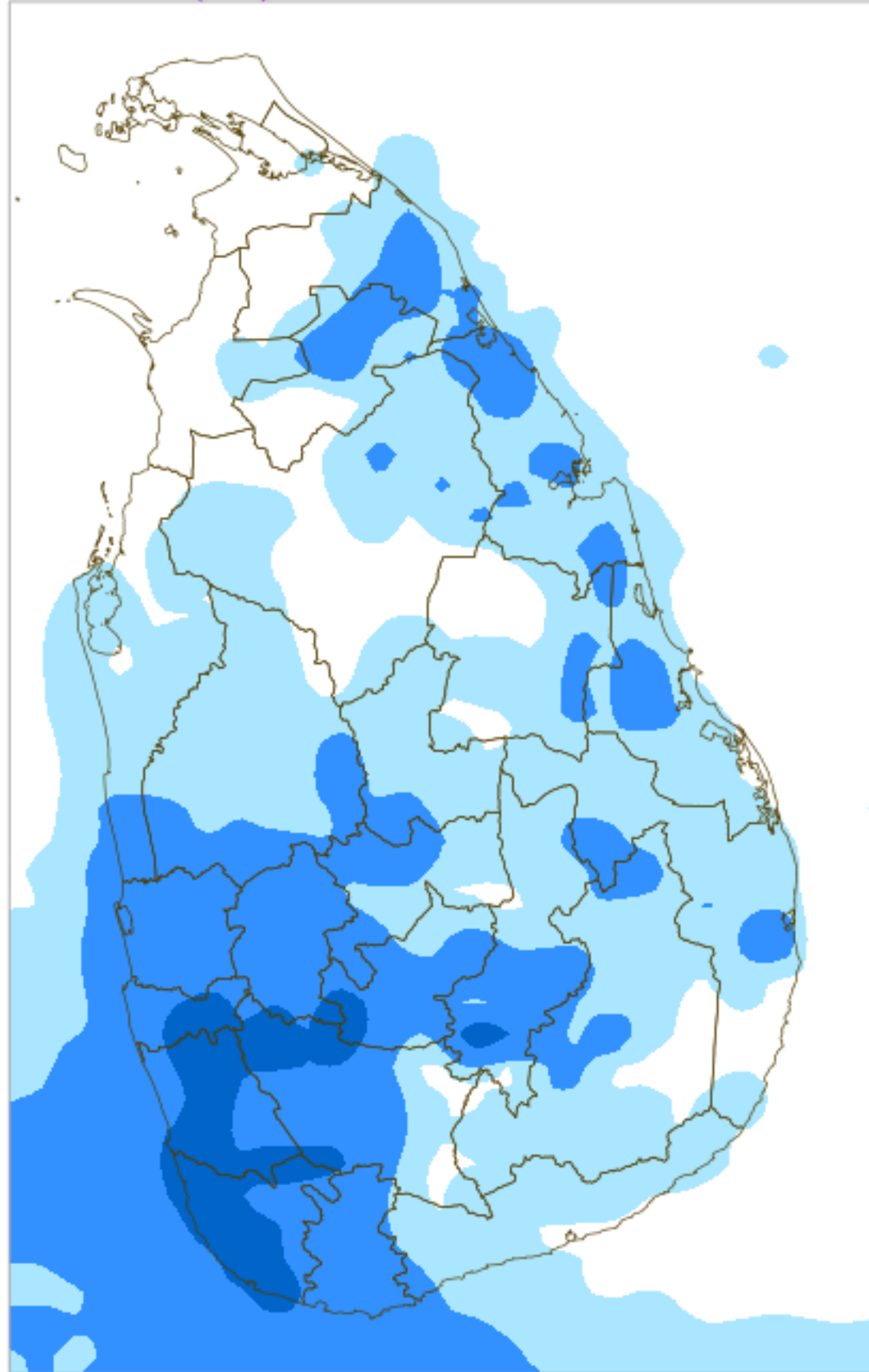
24H RAINFALL (mm) & MAXIMUM 2m TEMPERATURE (°C) FORECAST (24h)

For 24 hours ending at 8.30AM 08 AUG 2023

(Based on ECMWF (op1) model initialized at 12UTC 02 AUG 2023)

Rainfall (mm)

Max 2m Temp. (°C)



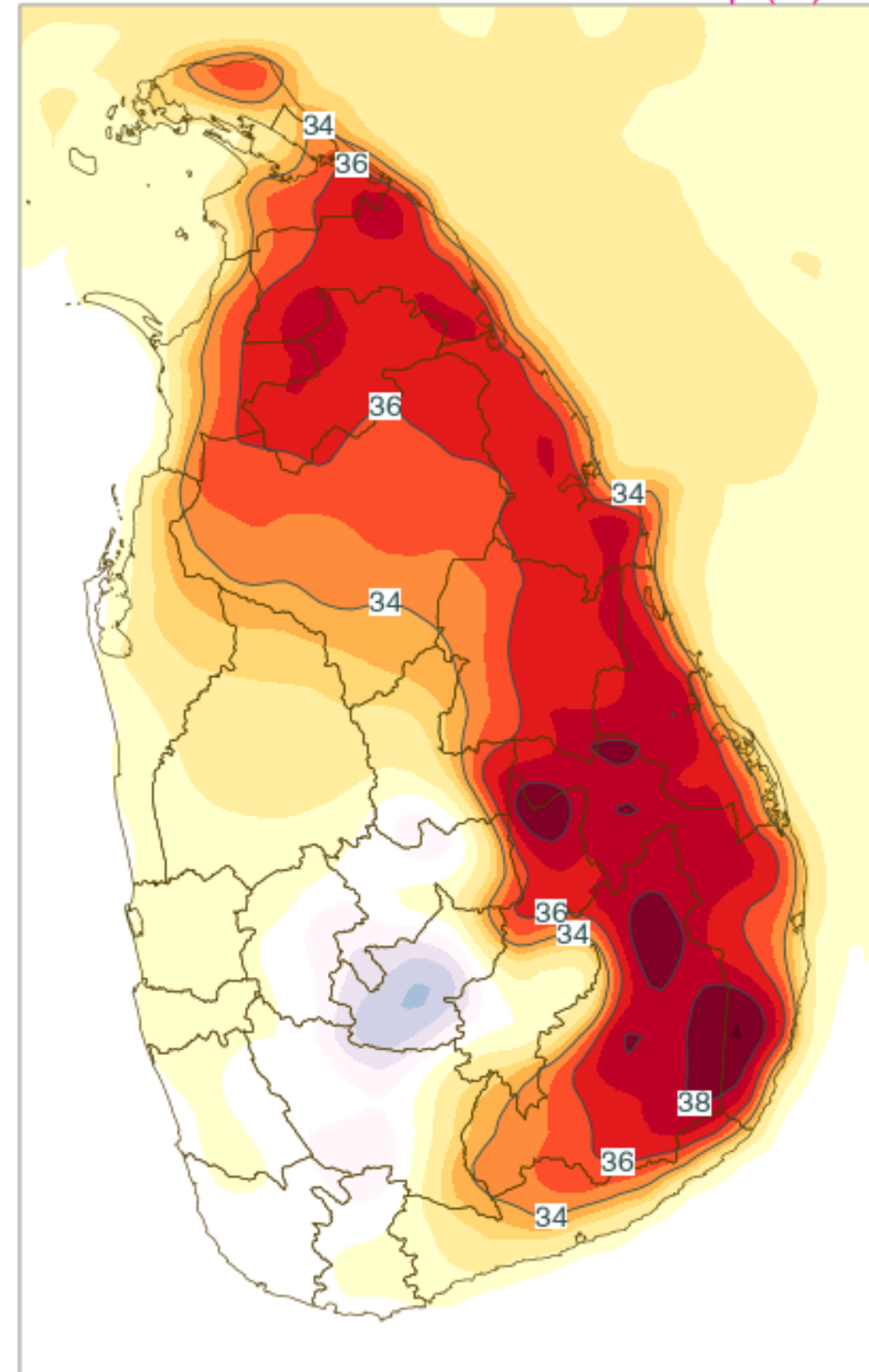
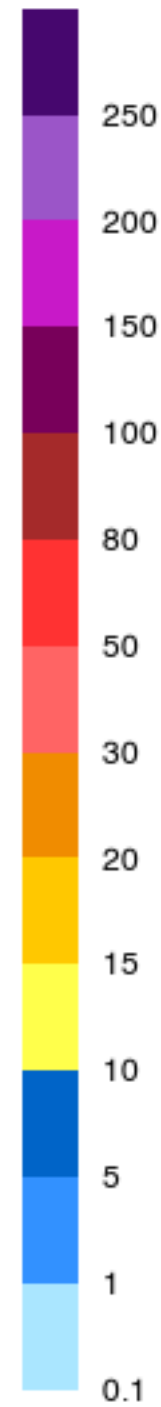
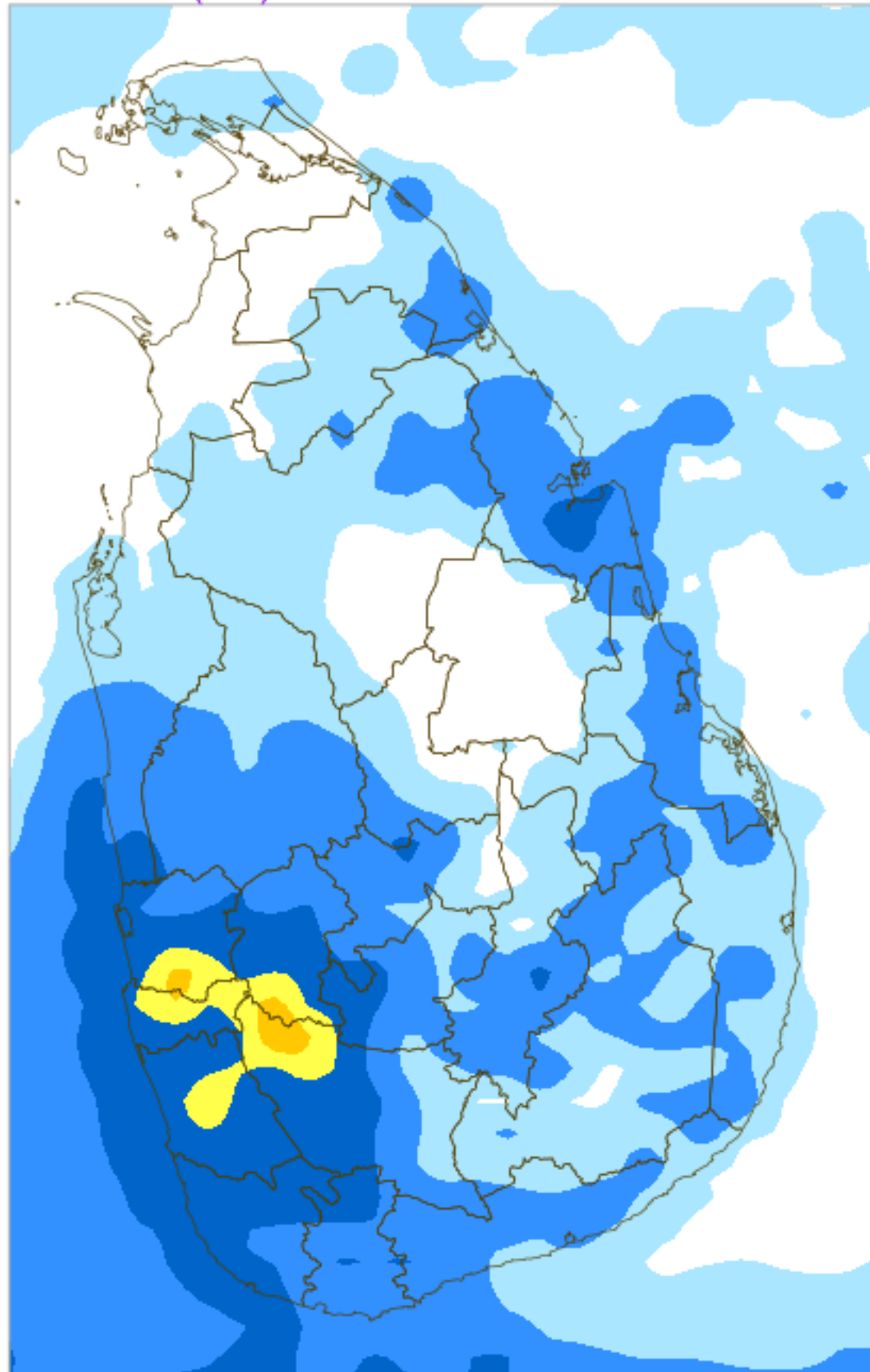
24H RAINFALL (mm) & MAXIMUM 2m TEMPERATURE (°C) FORECAST (24h)

For 24 hours ending at 8.30AM 09 AUG 2023

(Based on ECMWF (op1) model initialized at 12UTC 02 AUG 2023)

Rainfall (mm)

Max 2m Temp. (°C)



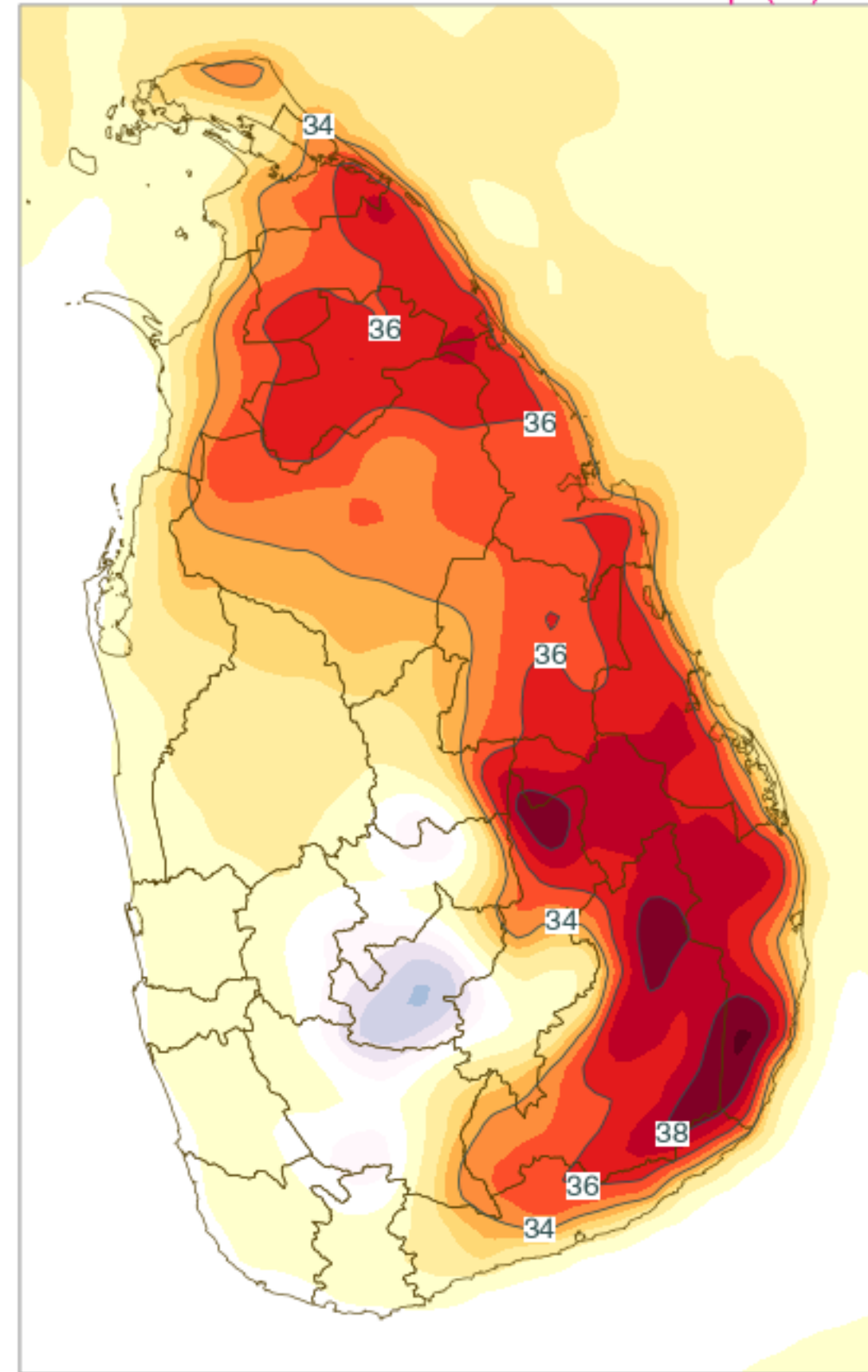
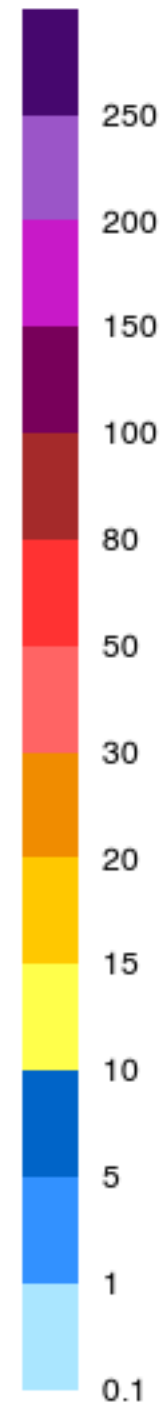
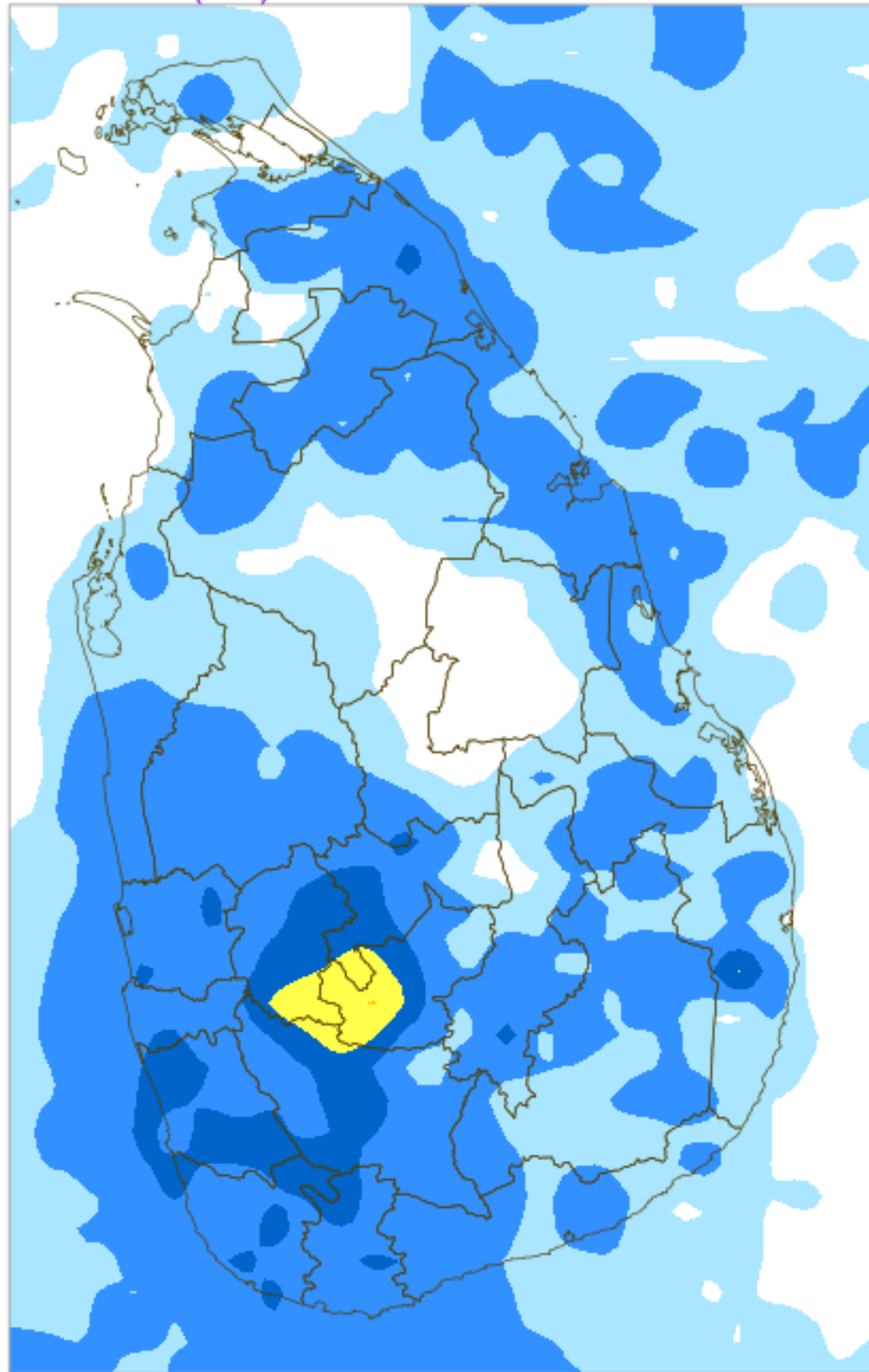
24H RAINFALL (mm) & MAXIMUM 2m TEMPERATURE (°C) FORECAST (24h)

For 24 hours ending at 8.30AM 10 AUG 2023

(Based on ECMWF (op1) model initialized at 12UTC 02 AUG 2023)

Rainfall (mm)

Max 2m Temp. (°C)



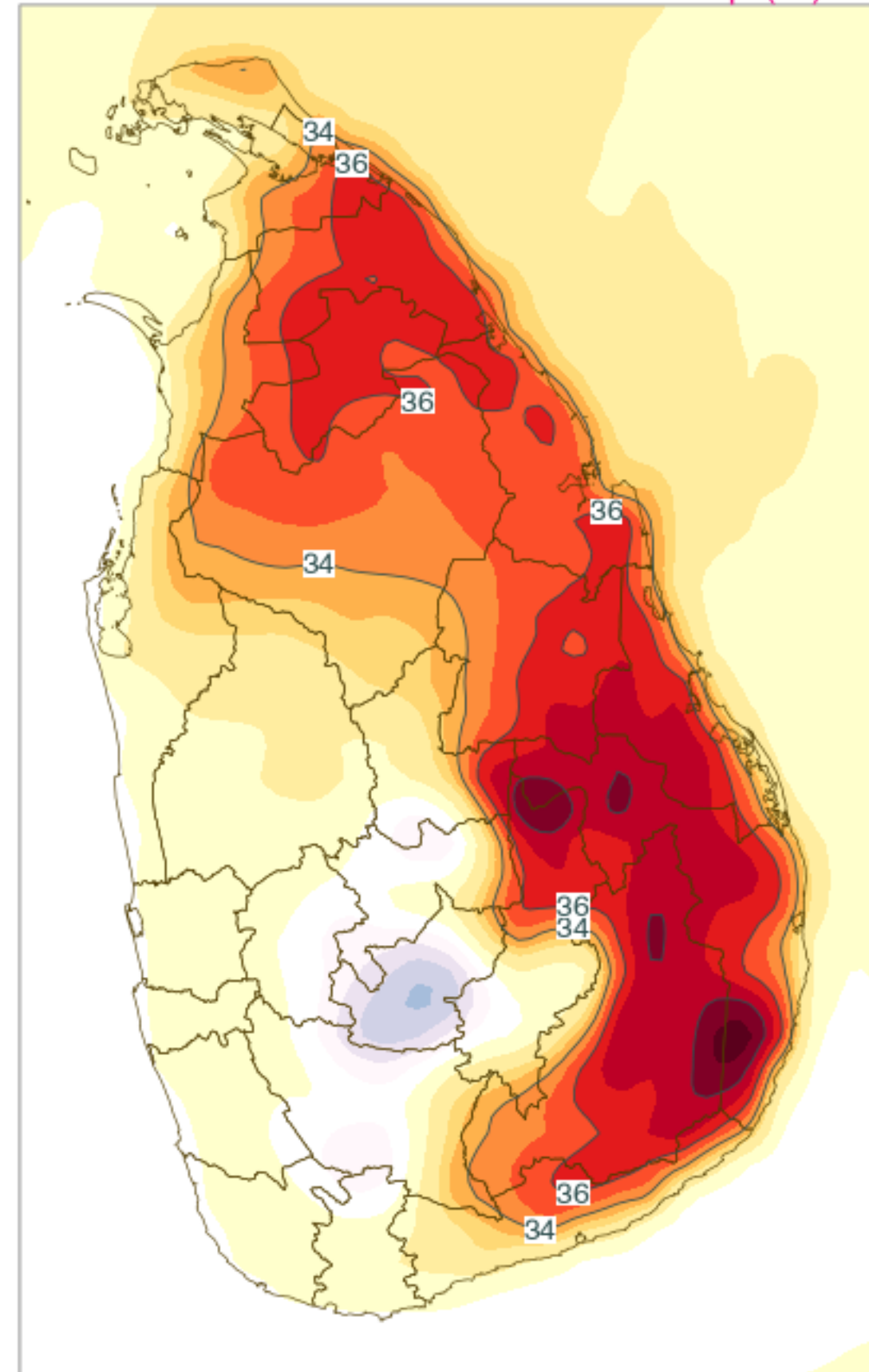
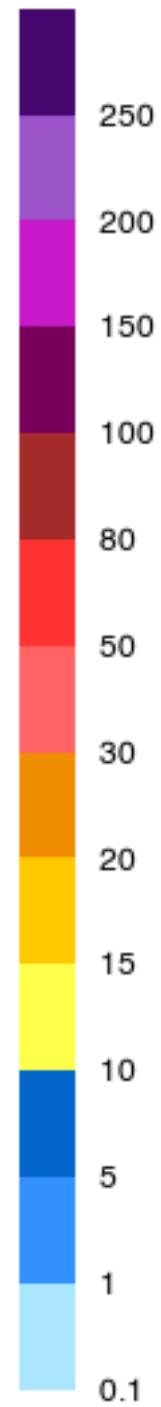
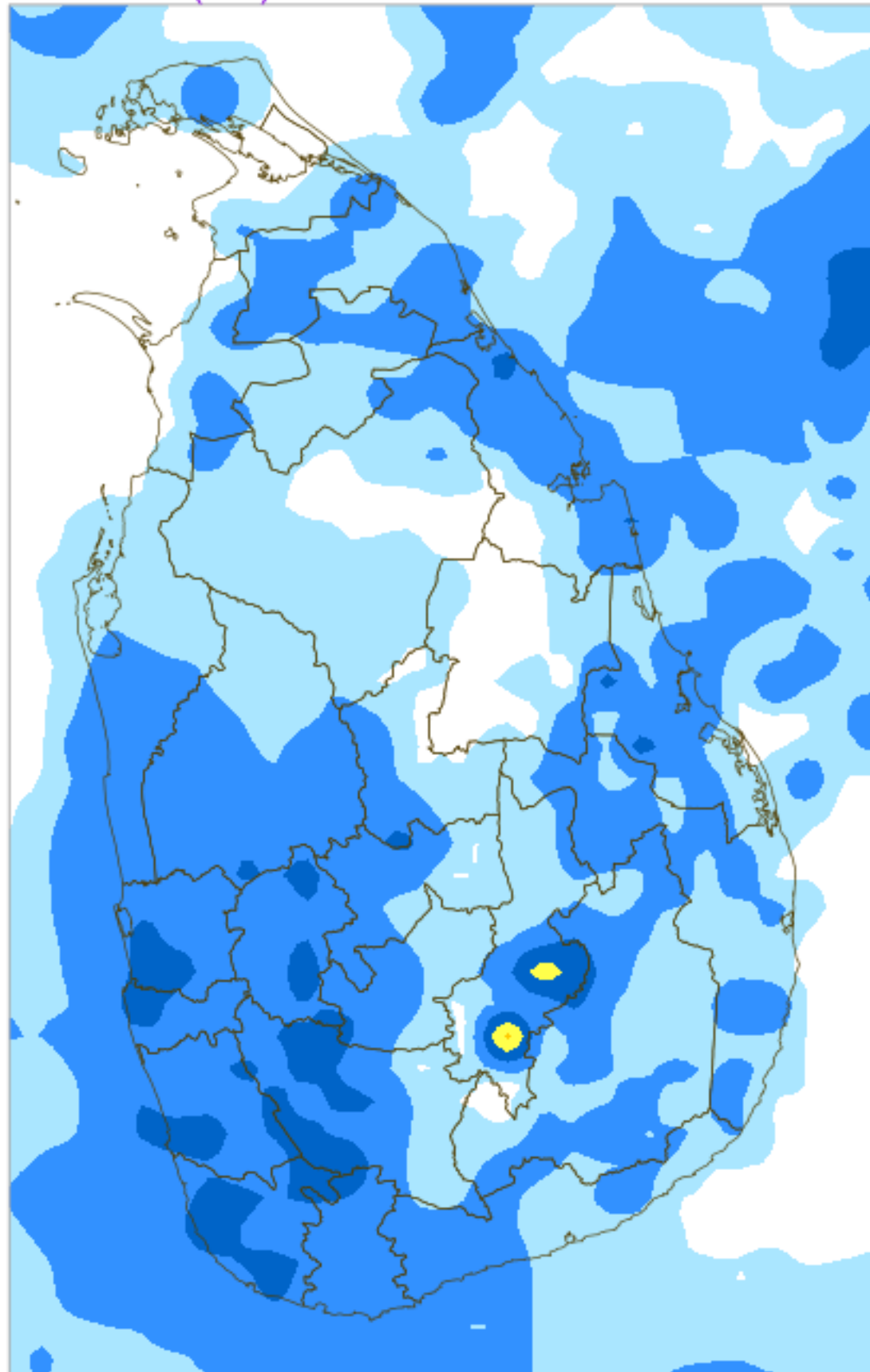
24H RAINFALL (mm) & MAXIMUM 2m TEMPERATURE (°C) FORECAST (24h)

For 24 hours ending at 8.30AM 11 AUG 2023

(Based on ECMWF (op1) model initialized at 12UTC 02 AUG 2023)

Rainfall (mm)

Max 2m Temp. (°C)



24H RAINFALL (mm) & MAXIMUM 2m TEMPERATURE (°C) FORECAST (24h)

For 24 hours ending at 8.30AM 12 AUG 2023

(Based on ECMWF (op1) model initialized at 12UTC 02 AUG 2023)

Rainfall (mm)

Max 2m Temp. (°C)

